

PERU, INDIANA

# ILS or LOC RWY 23

<b>LOC I-RSM</b> 109.5	<b>APCH CRS</b> 226°	<b>Rwy Idg</b> 12,501 <b>TDZE</b> 799 <b>Arprt Elev</b> 811	[USAF]
---------------------------	-------------------------	---	--------

GRISSOM ARB (KGUS)

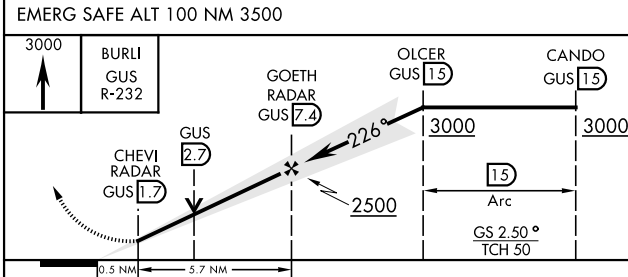
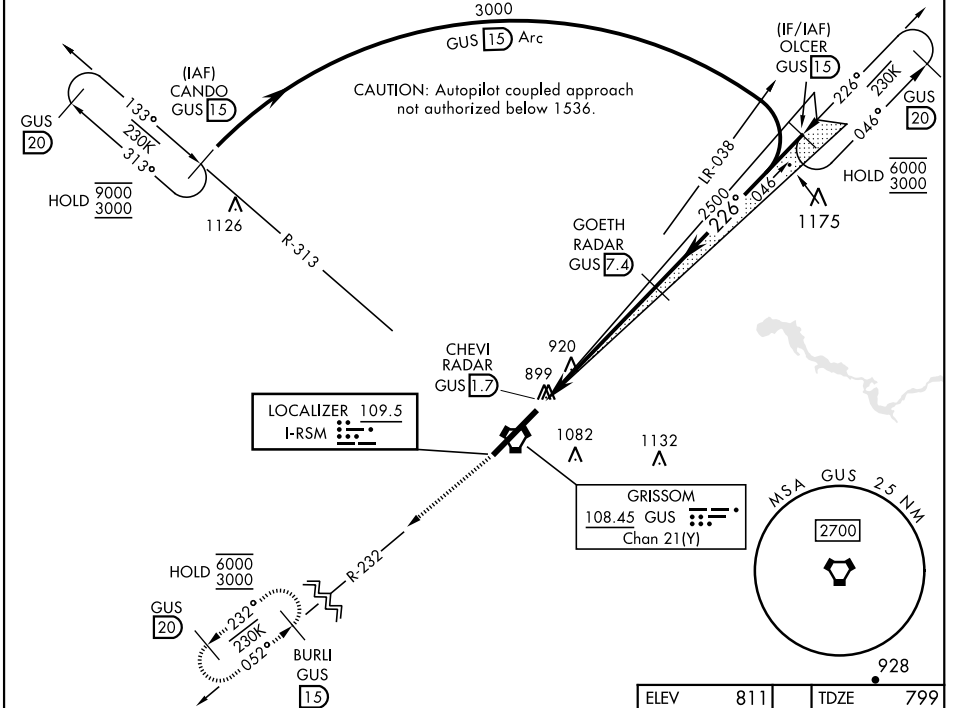
**RADAR, TACAN required.**

\*When ALS inop, increase RVR to 40 and vis to ¾ mile.  
\*\* When ALS inop, increase CAT AB RVR to 55 and vis to 1 mile, CAT CDE vis to 1½ miles.

**ALSF-1**

**MISSED APPROACH:** Climb to 3000 on the GUS VORTAC R-232 to BURLI and hold.  
Missed approach requires use of RNAV or ATC RADAR monitoring.

<b>ATIS</b> 132.55 270.8	<b>APP CON</b> 121.05 351.8 (E) 123.85 291.675 (W)	<b>TOWER*</b> 133.7 290.45	<b>GND CON</b> 128.425 275.8	<b>CLNC DEL</b> 128.425 275.8
-----------------------------	--	-------------------------------	---------------------------------	----------------------------------



ELEV 811	TDZE 799
----------	----------

226°

913  
911  
911

TWR 938

12,501/200

1000

HIRL Rwy 5-23

FAF to MAP 5.7 NM					
Knots	60	90	120	150	180
Min:Sec	5:42	3:48	2:51	2:17	1:54

CATEGORY	A	B	C	D	E
S-ILS 23*	999/24		200	(200-½)	
S-LOC 23**	1260/24	461 (500-½)	1260/50	461	(500-1)
<b>C</b> CIRCLING	1340-1	529 (600-1)	1400-1½ 589 (600-1½)	1400-2 589 (600-2)	1440-2¼ 629 (700-2¼)

PERU, INDIANA  
Amdt 7 14JUL22

40°39'N-86°09'W

GRISSOM ARB (KGUS)

# ILS or LOC RWY 23

EC-2, 17 APR 2025 to 15 MAY 2025

EC-2, 17 APR 2025 to 15 MAY 2025