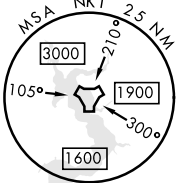
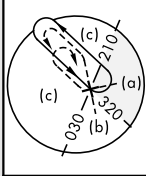
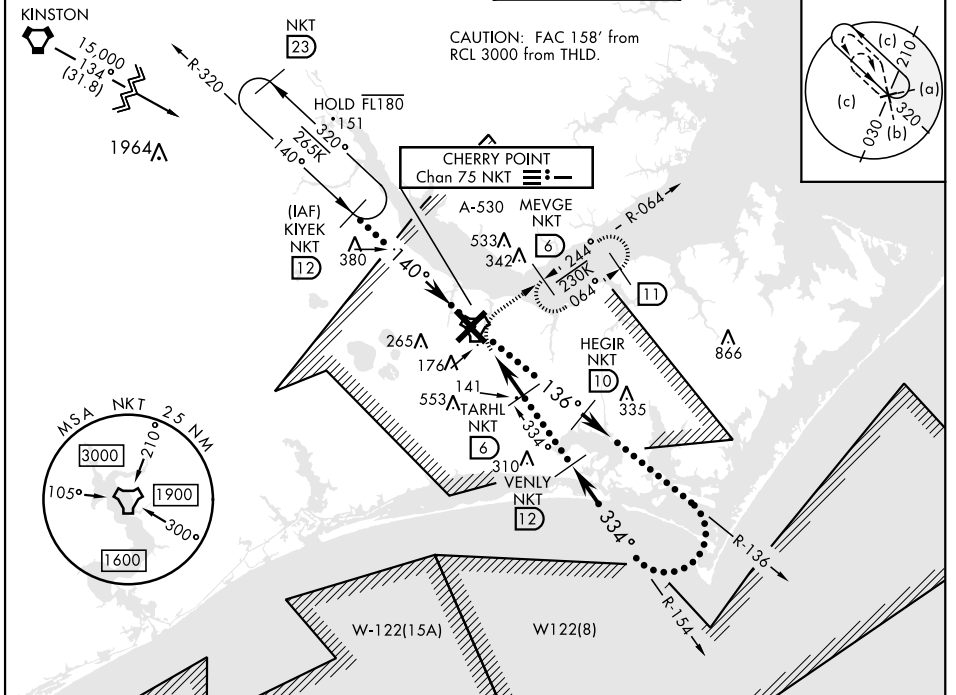


HI-TACAN X RWY 32L

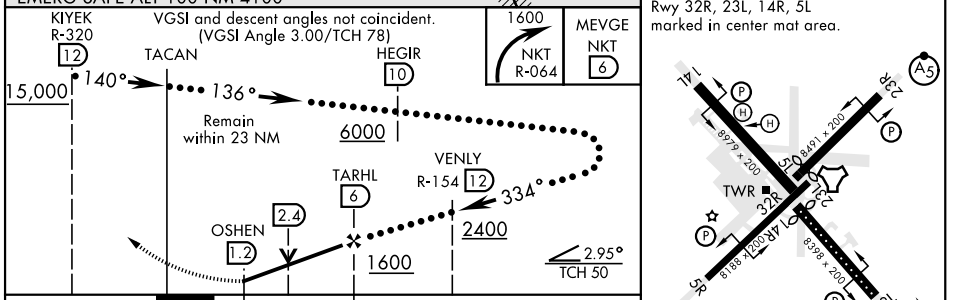
TACAN NKT Chan 75	APCH CRS 334°	Rwy Idg TDZE 7551 Arprt Elev 26 29	[USN]	CHERRY POINT MCAS (CUNNINGHAM FLD) (KNKT)
----------------------	------------------	---	-------	---

▼ * When ALS inop, increase vis to 1½ miles.
ALSF-1 (A1)
MISSED APPROACH: Climbing right turn to 1600, intercept NKT R-064 to MEVGE and hold.

ATIS 127.475 244.875	(E) 119.75 (E) 132.575 (W) 119.35	APP CON 360.775 (abv 2600') 299.6 (at/blw 2600') 377.175 (N) 124.1 268.7	TOWER 121.3 340.2	GND CON 128.625 239.025	CLNC DEL 125.95 316.125	ASR/PAR
----------------------------	---	---	----------------------	-------------------------------	-------------------------------	---------

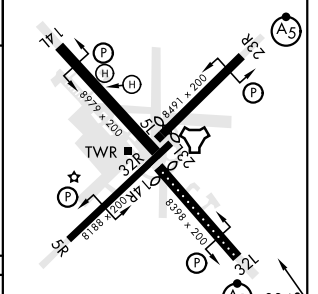


EMERG SAFE ALT 100 NM 4100



ELEV 29	D	TDZE 26
---------	---	---------

Rwy 32R, 23L, 14R, 5L marked in center mat area.



CATEGORY	C	D	E
S-32L *	460-¾	435 (500-¾)	
CIRCLING	580-1½ 551 (600-1½)	580-2 551 (600-2)	700-2½ 671 (700-2½)

HIRL all rwys
 REIL Rwy 5L and 14R
 Rwy 5L-23R Idg 7552'
 Rwy 14R-32L Idg 7551'

HI-TACAN X RWY 32L

SE-2, 17 APR 2025 to 15 MAY 2025

SE-2, 17 APR 2025 to 15 MAY 2025