

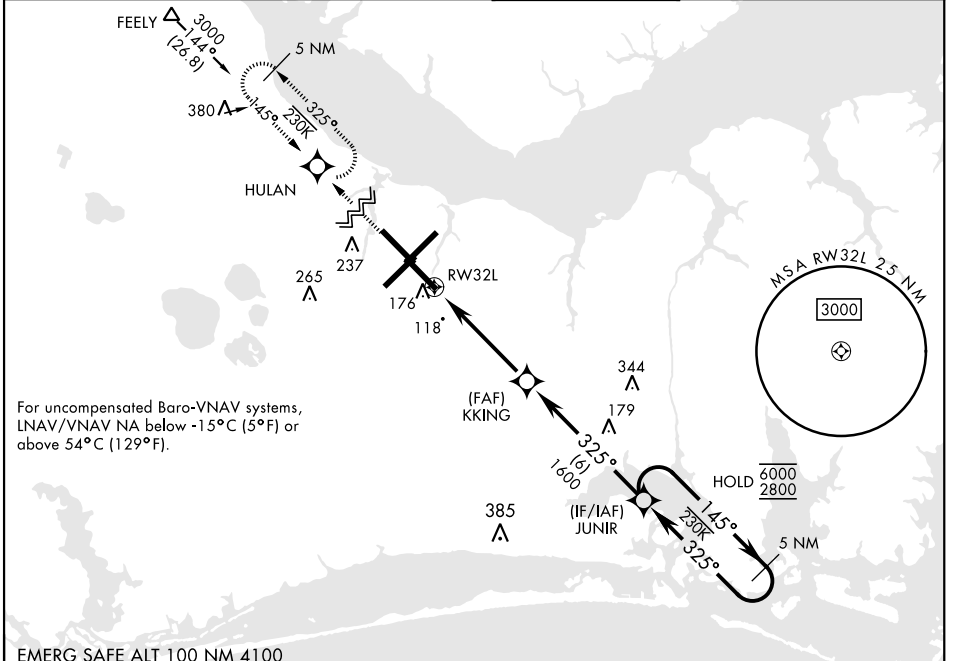
CHERRY POINT, NORTH CAROLINA

RNAV (GPS) RWY 32L

WAAS Chan 54304 W32A	APCH CRS 325°	Rwy Idg TDZE Arprt Elev 7551 26 29
--	-------------------------	--

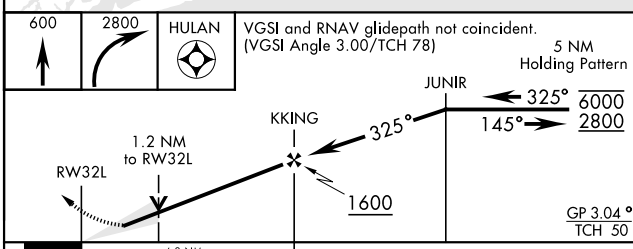
[USN] CHERRY POINT MCAS (CUNNINGHAM FLD) (KNKT)

RNP APCH ▼ *When ALS inop, increase vis to ¾ mile. **When ALS inop, increase vis to 1 mile. ***When ALS inop, increase CAT AB vis to 1 mile, CAT CD vis to 1¼ miles.		ALSF-1 	MISSED APPROACH: Climb to 600 then climbing right turn to 2800 direct HULAN and hold.			
ATIS 127.475 244.875	(E) 119.75 (E) 132.575 (W) 119.35	APP CON 360.775 (abv 2600') 299.6 (at/blw 2600') 377.175 (N) 124.1 268.7	TOWER 121.3 340.2	GND CON 128.625 239.025	CLNC DEL 125.95 316.125	ASR/ PAR



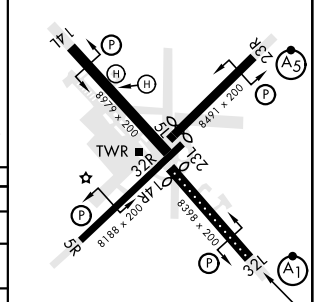
For uncompensated Baro-VNAV systems, LNAV/VNAV NA below -15°C (5°F) or above 54°C (129°F).

EMERG SAFE ALT 100 NM 4100



ELEV	29	TDZE	26
------	----	------	----

Rwy 32R, 23L, 14R, 5L marked in center mat area.



CATEGORY	A	B	C	D
LPV DA*	225-½		200	(200-½)
LNAV/VNAV DA**	400-⅝		375	(400-⅝)
LNAV MDA***	460-½	435 (500-½)	460-¾	435 (500-¾)
CIRCLING	580-1	551 (600-1)	580-1½	580-2
			551 (600-1½)	551 (600-2)

HIRL all rwys
 REIL Rwy 5L and 14R
 Rwy 5L-23R Idg 7552'
 Rwy 14R-32L Idg 7551'

CHERRY POINT, NORTH CAROLINA

34° 54' N-76° 53' W

CHERRY POINT MCAS (CUNNINGHAM FLD) (KNKT)

Amdt 8 02NOV23

RNAV (GPS) RWY 32L

SE-2, 17 APR 2025 to 15 MAY 2025

SE-2, 17 APR 2025 to 15 MAY 2025