

CHERRY POINT, NORTH CAROLINA

RNAV (GPS) RWY 5R

WAAS Chan 71199 W05A	APCH CRS 054°	Rwy Idg TDZE Arprt Elev 8188 27 29
--	-------------------------	--

[USN]

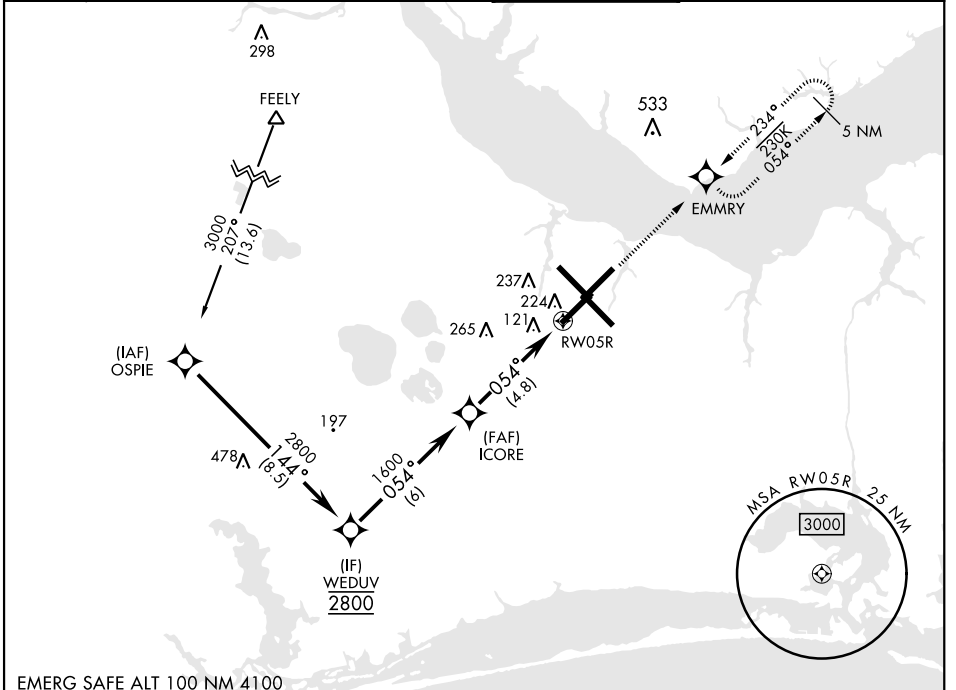
CHERRY POINT MCAS (CUNNINGHAM FLD) (KNKT)

RNP APCH

▼ For uncompensated Baro-VNAV systems, LNAV/VNAV NA below -15°C (5°F) or above 54°C (129°F).

MISSED APPROACH: Climb to 600, then climbing left turn to 2600 direct EMMRY and hold. Continue climb in hold to 2600.

ATIS 127.475 244.875	APP CON (E) 119.75 360.775 (abv 2600') (E) 132.575 299.6 (at/blw 2600') (W) 119.35 377.175 (N) 124.1 268.7	TOWER 121.3 340.2	GND CON 128.625 239.025	CLNC DEL 125.95 316.125	ASR/ PAR
--	---	------------------------------------	---	---	-------------



SE-2, 17 APR 2025 to 15 MAY 2025

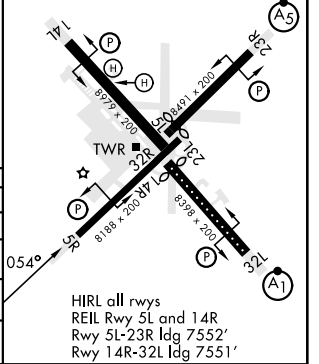
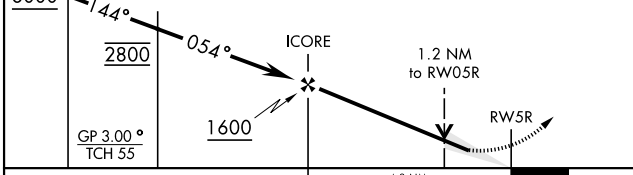
SE-2, 17 APR 2025 to 15 MAY 2025

EMERG SAFE ALT 100 NM 4100

VGSI and RNAV glidepath not coincident (VGSI Angle 3.00/TCH 73).	600	2600	EMMRY
--	-----	------	-------

ELEV	29	TDZE	27
------	----	------	----

Rwy 32R, 23L, 14R, 5L marked in center mat area.



CATEGORY	A	B	C	D
LPV DA		226-¾	200	(200-¾)
LNAV/VNAV DA		398-1	372	(400-1)
LNAV MDA	480-1	454 (500-1)	480-1¾	454 (500-1¾)
CIRCLING	580-1	551 (600-1)	580-1½	580-2
			551 (600-1½)	551 (600-2)

CHERRY POINT, NORTH CAROLINA
Amdt 6 02NOV23

34° 54' N - 76° 53' W

CHERRY POINT MCAS (CUNNINGHAM FLD) (KNKT)

RNAV (GPS) RWY 5R