

TACAN Z RWY 14L

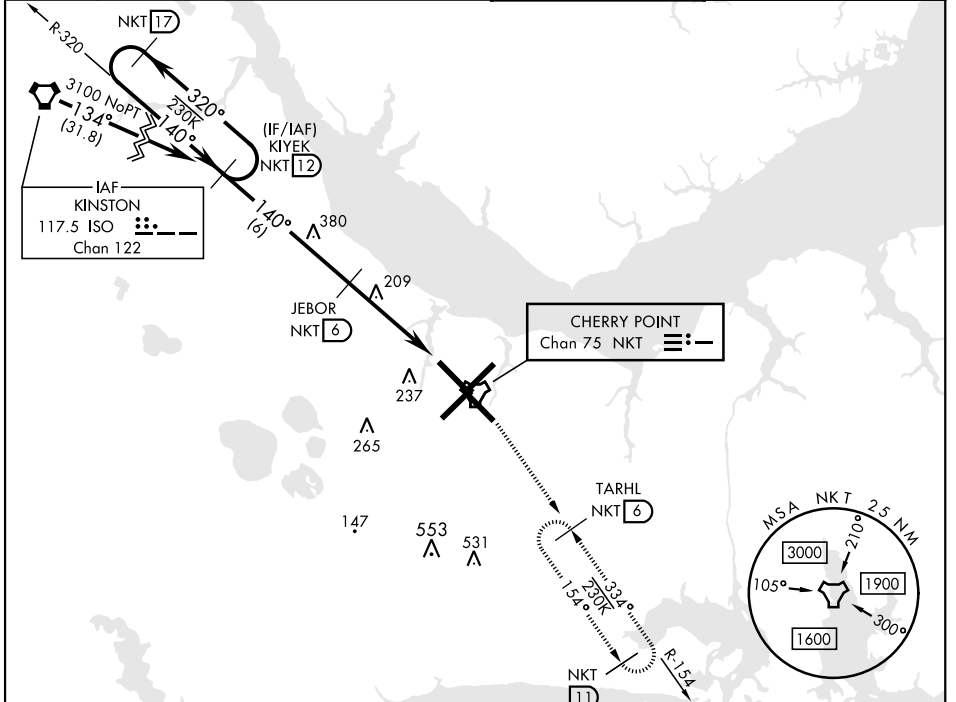
TACAN NKT Chan 75	APCH CRS 140°	Rwy ldg TDZE 26 Arprt Elev 29
-----------------------------	-------------------------	---

[UN]

CHERRY POINT MCAS (CUNNINGHAM FLD) (KNKT)

▼ MISSED APPROACH: Climb to 1600 direct NKT TACAN and fly NKT R-154 to TARHL and hold.

ATIS 127.475 244.875	(E) 119.75 (E) 132.575 (W) 119.35	APP CON 360.775 (abv 2600') 299.6 (at/blw 2600') 377.175 (N) 124.1 268.7	TOWER 121.3 340.2	GND CON 128.625 239.025	CLNC DEL 125.95 316.125	ASR/ PAR
--	--	---	-----------------------------	---	---	-------------

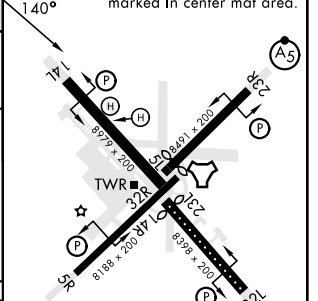
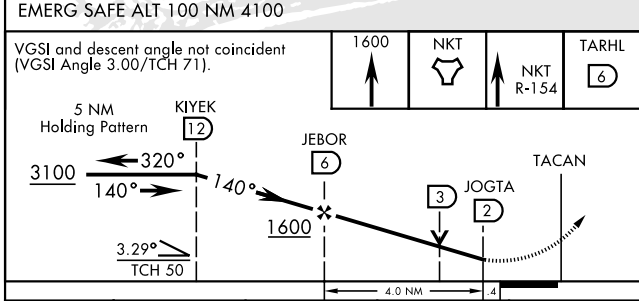


SE-2, 17 APR 2025 to 15 MAY 2025

SE-2, 17 APR 2025 to 15 MAY 2025

ELEV 29	TDZE 26
---------	---------

Rwy 32R, 23L, 14R, 5L marked in center mat area.



CATEGORY	A	B	C	D
S-14L	500-1	474 (500-1)	500-1 3/8	474 (500-1 3/8)
CIRCLING	580-1	551 (600-1)	580-1 1/2	551 (600-1 1/2)

HIRL all rwys
REIL Rwy 5L and 14R
Rwy 5L-23R ldg 7552'
Rwy 14R-32L ldg 7551'

TACAN Z RWY 14L