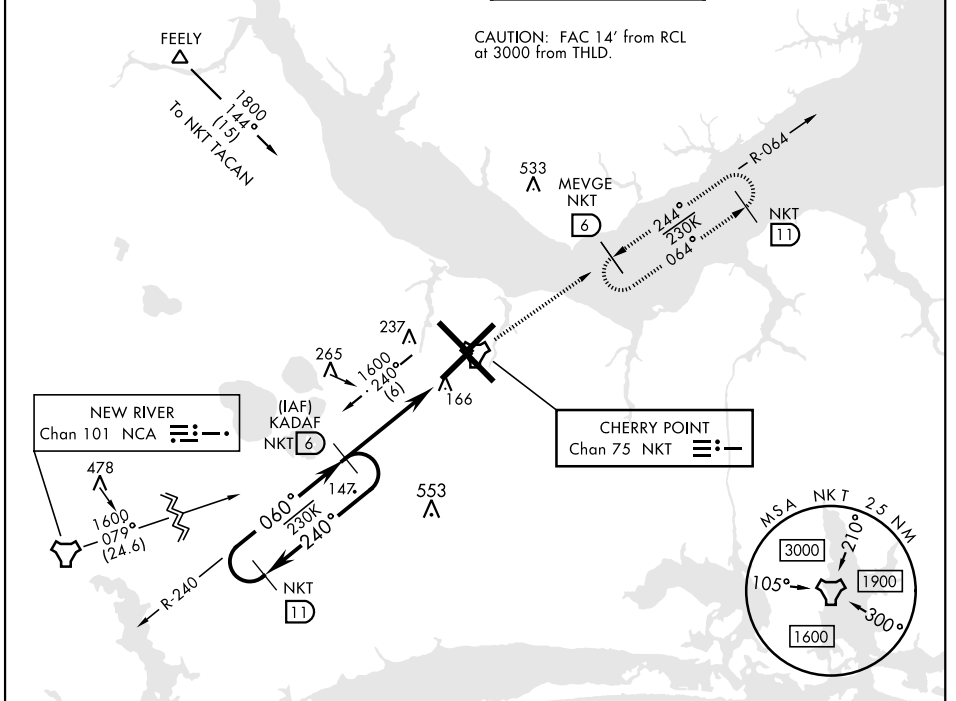


# TACAN Z RWY 5R

TACAN NKT Chan <b>75</b>	APCH CRS <b>060°</b>	Rwy ldg TDZE Arprt Elev <b>8188</b> <b>27</b> <b>29</b>	[USN] CHERRY POINT MCAS (CUNNINGHAM FLD) (KNKT)
-----------------------------	-------------------------	---	---

**MISSED APPROACH:** Climb to 1600 direct NKT TACAN and fly NKT R-064 to MEVGE and hold.

ATIS <b>127.475</b> <b>244.875</b>	(E) <b>119.75</b> (E) <b>132.575</b> (W) <b>119.35</b>	APP CON <b>360.775</b> (aby 2600') <b>299.6</b> (at/blw 2600') <b>377.175</b> (N) <b>124.1</b> <b>268.7</b>	TOWER <b>121.3</b> <b>340.2</b>	GND CON <b>128.625</b> <b>239.025</b>	CLNC DEL <b>125.95</b> <b>316.125</b>	ASR/ PAR
--	--	--	------------------------------------	---	---	-------------

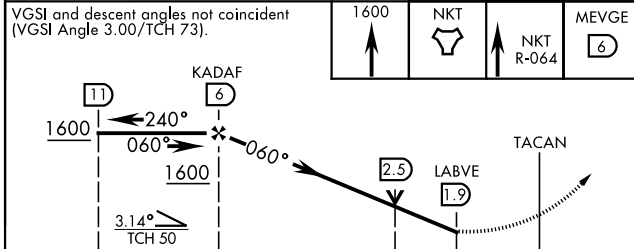


SE-2, 17 APR 2025 to 15 MAY 2025

SE-2, 17 APR 2025 to 15 MAY 2025

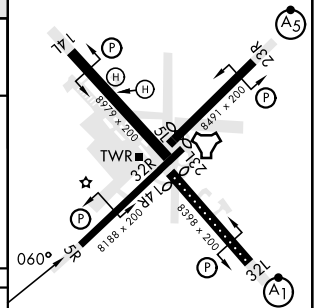
**EMERG SAFE ALT 100 NM 4100**

VGSI and descent angles not coincident (VGSI Angle 3.00/TCH 73).



ELEV 29	TDZE 27
---------	---------

Rwy 32R, 23L, 14R, 5L marked in center mat area.



CATEGORY	A	B	C	D
S-5R	420-1	394 (400-1)	420-1½	394 (400-1½)
CIRCLING	580-1	551 (600-1)	580-1½	551 (600-2)

HIRL all rwys  
REIL Rwy 5L and 14R  
Rwy 5L-23R ldg 7552'  
Rwy 14R-32L ldg 7551'

# TACAN Z RWY 5R