

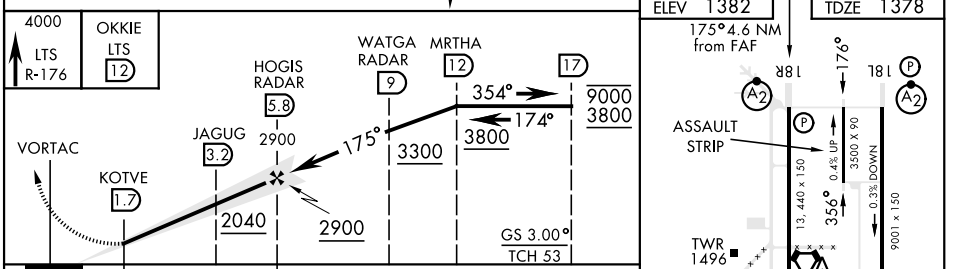
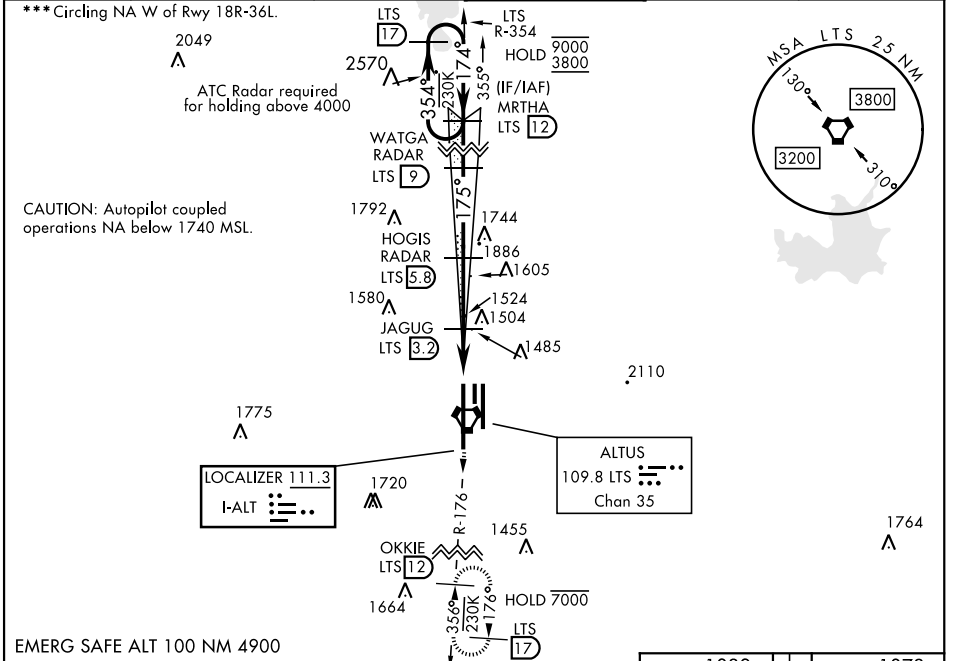
ALTUS, OKLAHOMA

ILS Z or LOC RWY 18R

LOC I-ALT 111.3	APCH CRS 175°	Rwy Idg 13,440 TDZE 1378 Arpt Elev 1382	AL-482 [USAF]	ALTUS AFB (KLTS)
---------------------------	-------------------------	--	---------------	------------------

DME or RADAR required.		SALSF 	MISSED APPROACH: Climb to 4000, intercept LTS VORTAC R-176 to OKKIE and hold.
<p>▼ *When ALS inop, increase RVR to 55 and vis to 1 mile.</p> <p>**When ALS inop, increase CAT AB RVR to 55, vis to 1 mile; CAT CDE vis to 1 1/8 miles.</p>			

ATIS ★	FORT WORTH CENTER	APP CON	TOWER ★	GND CON	CLNC DEL
109.8 273.5	133.5 350.35	125.1 353.7	119.65 254.4	121.85 275.8	120.65 284.7



CATEGORY	A	B	C	D	E
	S-ILS 18R	1578/40		200	(200-3/4)
S-LOC 18R *	1760/40	382 (400-3/4)	1760/45	382	(400-7/8)
*** CIRCLING	1780-1	1840-1	1880-1 1/2	2080-2 1/4	2180-2 3/4
	398 (400-1)	458 (500-1)	498 (500-1 1/2)	698 (700-2 1/4)	798 (800-2 3/4)
LOCAL ALTIMETER, WITHOUT LAST STEPDOWN FIX					
S-LOC 18R **	2040/40	662 (700-3/4)	2040-1 3/4	662	(500-1 3/4)
*** CIRCLING	2040-1	658 (700-1)	2040-1 7/8	2080-2 1/4	2180-2 3/4
			658 (700-1 7/8)	698 (700-2 1/4)	798 (800-2 3/4)

ELEV 1382	TDZE 1378
175° 4.6 NM from FAF	
881	181
ASSAULT STRIP	
TWR 1496	
1524	
1516	
36L	HIRL all Rws
FAF to MAP 4.1 NM	
Knots	60 90 120 150 180
Min:Sec	4:06 2:44 2:03 1:38 1:22

ALTUS, OKLAHOMA 34° 40' N-99° 16' W ALTUS AFB (KLTS)

Amdt 2 14JUL22

ILS Z or LOC RWY 18R

SC-1, 17 APR 2025 to 15 MAY 2025

SC-1, 17 APR 2025 to 15 MAY 2025