

# ROCKN THREE DEPARTURE (RNAV) (ROCKN3•ROCKN)

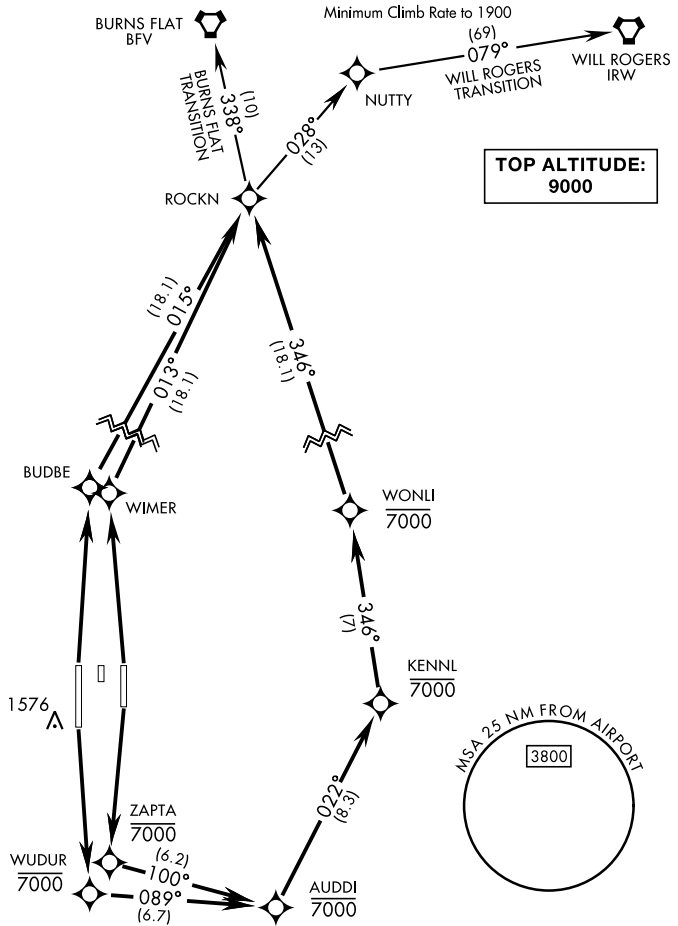
ALTUS AFB (KLTS)

ALTUS, OKLAHOMA

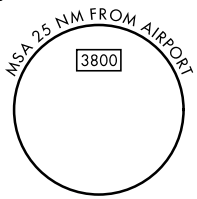
ATIS ★ 109.8 273.5  
 CLNC DEL  
 120.65 284.7  
 GND CON  
 121.85 275.8  
 ALTUS TOWER ★  
 119.65 254.4  
 ALTUS DEP CON  
 125.1 290.9  
 FORT WORTH CENTER  
 133.5 350.35  
 ALTUS APP CON  
 125.1 353.7

AL-482 [USAF]

Rwy	Knots	60	120	180	240	300	360
18L	V/V(fpm)	300	600	900	1200	1500	1800
18R	V/V(fpm)	360	720	1080	1440	1800	2160



**TOP ALTITUDE:  
9000**



RNAV1

**GPS REQUIRED**

## DEPARTURE ROUTE DESCRIPTION

**TAKEOFF RWY 18L:** Climb direct ZAPTA, then on depicted route to ROCKN. Cross WONLI at or below 7000, thence...

**TAKEOFF RWY 18R:** Climb direct WUDUR, then on depicted route to ROCKN. Cross WONLI at or below 7000, thence...

**TAKEOFF RWY 36L:** Climb direct BUDBE, then track 015° to ROCKN, thence...

**TAKEOFF RWY 36R:** Climb direct WIMER, then track 013° to ROCKN, thence...

...via transition or assigned route. Maintain 9000. Expect filed altitude 10 minutes after departure.

**BURNS FLAT TRANSITION (ROCKN3•BFV):** From over ROCKN track 338° to BFV VORTAC.

**WILL ROGERS TRANSITION (ROCKN3•IRW):** From over ROCKN track 028° to NUTTY, then track 079° to IRW VORTAC.

# ROCKN THREE DEPARTURE (RNAV) (ROCKN3•ROCKN)

Orig 07OCT21

ALTUS, OKLAHOMA  
ALTUS AFB (KLTS)

SC-1, 17 APR 2025 to 15 MAY 2025

SC-1, 17 APR 2025 to 15 MAY 2025