

ALTUS, OKLAHOMA

RNAV (RNP) X RWY 36L

| | | |
|----------|------------|--------|
| APCH CRS | Rwy Idg | 13,440 |
| 355° | TDZE | 1354 |
| | Arprt Elev | 1382 |

AL-482 (USAF)

ALTUS AFB (KLTS)

RNP AR APCH - RF

ALS-F1

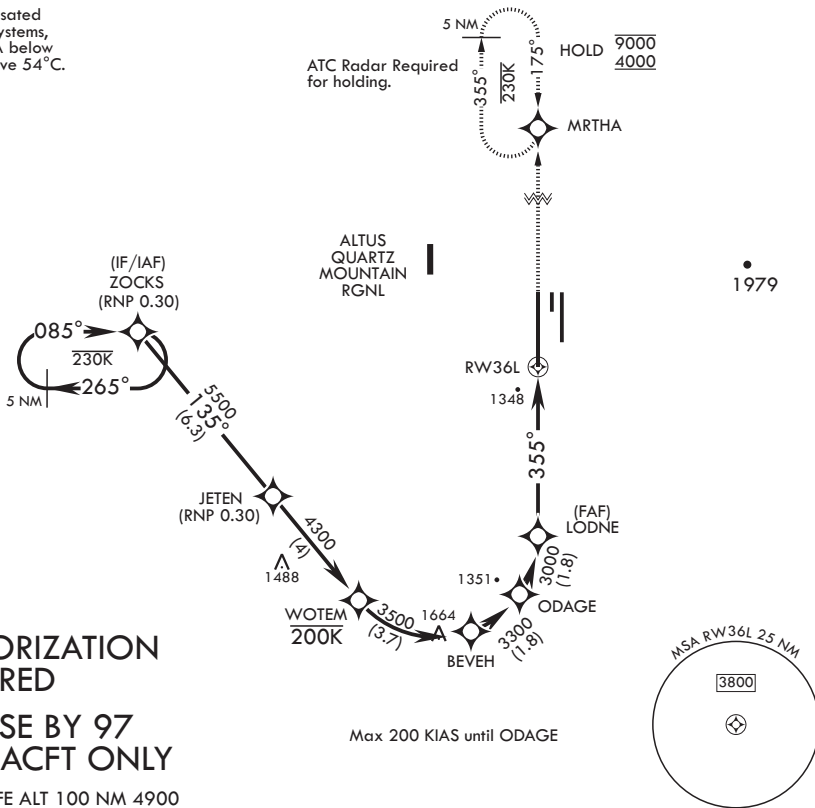
MISSED APPROACH: Climb to 4000 on track 355° to MRTHA and hold.

▼ * When ALS inop, increase RVR to 45, vis to 7/8 mile.
 ** When ALS inop, increase RVR to 55, vis to 1 mile.



| | | | | |
|-------------|-------------|--------------|--------------|--------------|
| ATIS ★ | APP CON | TOWER ★ | GND CON | CLNC DEL |
| 109.8 273.5 | 125.1 353.7 | 119.65 254.4 | 121.85 275.8 | 120.65 284.7 |

For uncompensated Baro-VNAV systems, procedure NA below -17°C or above 54°C.



AUTHORIZATION REQUIRED
FOR USE BY 97 AMW ACFT ONLY

EMERG SAFE ALT 100 NM 4900

| <p>ZOCKS</p> <p>8000</p> <p>JETEN</p> <p>5500</p> <p>WOTEM</p> <p>4300</p> <p>BEVEH</p> <p>3500</p> <p>ODAGE</p> <p>3300</p> <p>LODNE</p> <p>3000</p> <p>RW36L</p> <p>3000</p> <p>GP 3.00°</p> <p>TCH 55</p> | <p>4000</p> <p>tr</p> <p>355°</p> <p>MRTHA</p> <p>ELEV 1382</p> <p>TDZE 1354</p> | <p>881</p> <p>781</p> <p>3500 x 90</p> <p>176°</p> <p>0.4% UP</p> <p>0.33% UP</p> <p>9001 x 150</p> <p>36R</p> <p>ASSAULT STRIP</p> <p>TWR BCN</p> <p>13,440 x 1,30°</p> <p>36L</p> <p>1394</p> <p>355° to RW36L</p> | | | | | | | | | | | | | | | |
|---|--|--|-----------|---|---|---|---|--------------|---------|-----|-----------|--|---------------|---------|-----|-----------|--|
| <table border="1"> <thead> <tr> <th>CATEGORY</th> <th>A</th> <th>B</th> <th>C</th> <th>D</th> </tr> </thead> <tbody> <tr> <td>RNP 0.10 DA*</td> <td>1646/24</td> <td>292</td> <td>(300-1/2)</td> <td></td> </tr> <tr> <td>RNP 0.30 DA**</td> <td>1732/35</td> <td>378</td> <td>(400-3/8)</td> <td></td> </tr> </tbody> </table> | | | CATEGORY | A | B | C | D | RNP 0.10 DA* | 1646/24 | 292 | (300-1/2) | | RNP 0.30 DA** | 1732/35 | 378 | (400-3/8) | |
| CATEGORY | A | B | C | D | | | | | | | | | | | | | |
| RNP 0.10 DA* | 1646/24 | 292 | (300-1/2) | | | | | | | | | | | | | | |
| RNP 0.30 DA** | 1732/35 | 378 | (400-3/8) | | | | | | | | | | | | | | |

ALTUS, OKLAHOMA

34°40'N - 99°16'W

ALTUS AFB (KLTS)

Amdt 2 14JUL22

RNAV (RNP) X RWY 36L

SC-1, 17 APR 2025 to 15 MAY 2025

SC-1, 17 APR 2025 to 15 MAY 2025