

ALTUS, OKLAHOMA

RNAV (GPS) Z RWY 18L

APCH CRS	Rwy Idg	9001
175°	TDZE	1382
	Arprt Elev	1382

AL-482 (USAF)

ALTUS AFB (KLTS)

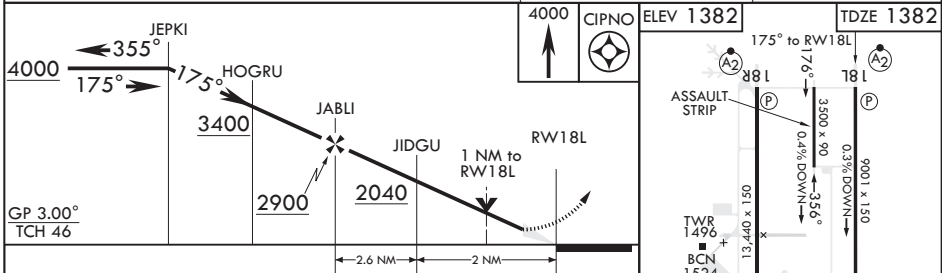
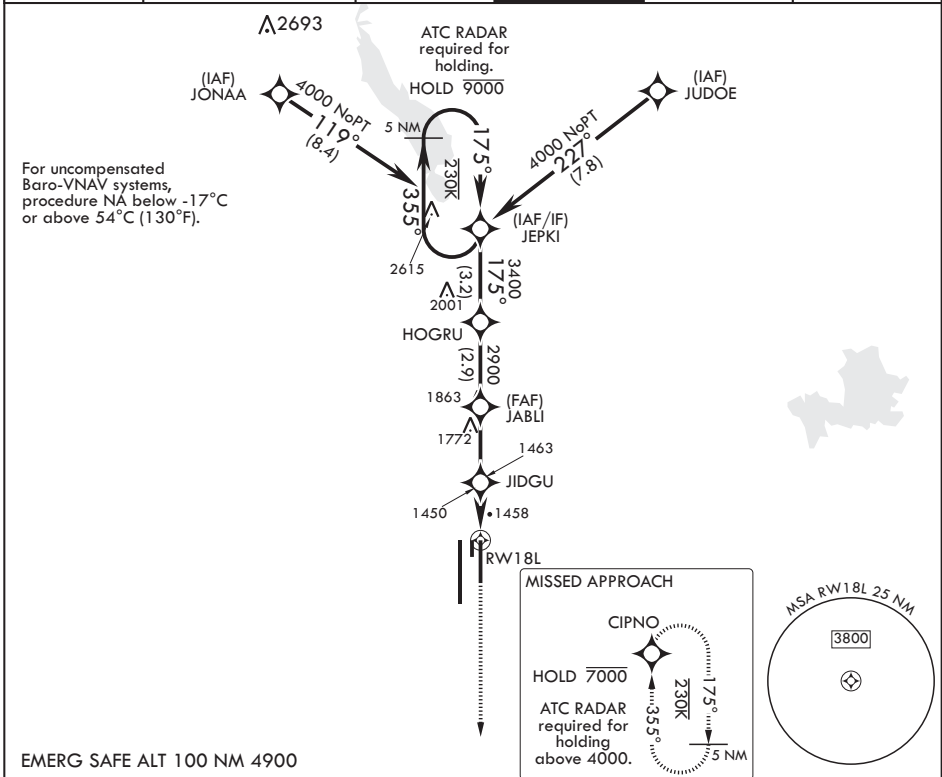
RNP APCH. DME/DME RNP-0.3 NA



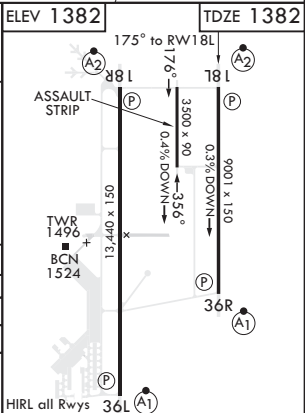
MISSED APPROACH: Climb to 4000 direct CIPNO and hold.

* When ALS inop, increase RVR to 55, vis to 1 mile.
** Circling NA W of Rwy 18R-36L.

ATIS★	FORT WORTH CENTER	APP CON	TOWER★	GND CON	CLNC DEL
109.8 273.5	133.5 350.35	125.1 353.7	119.65 254.4	121.85 275.8	120.65 284.7



CATEGORY	A	B	C	D	E
LNAV/VNAV DA	1632/40	250	(300-¾)		
LNAV MDA*	1760/40	378	(400-¾)		
CIRCLING**	1780-1 398 (400-1)	1840-1 458 (500-1)	1880-1½ 498 (500-1½)	2080-2¼ 698 (700-2¼)	2180-2¾ 798 (800-2¾)



ALTUS, OKLAHOMA

34°40'N - 99°16'W

ALTUS AFB (KLTS)

Amdt 3 14JUL22
TERPS

RNAV (GPS) Z RWY 18L

SC-1, 17 APR 2025 to 15 MAY 2025

SC-1, 17 APR 2025 to 15 MAY 2025