

ALTUS, OKLAHOMA

# VOR or TACAN RWY 18R

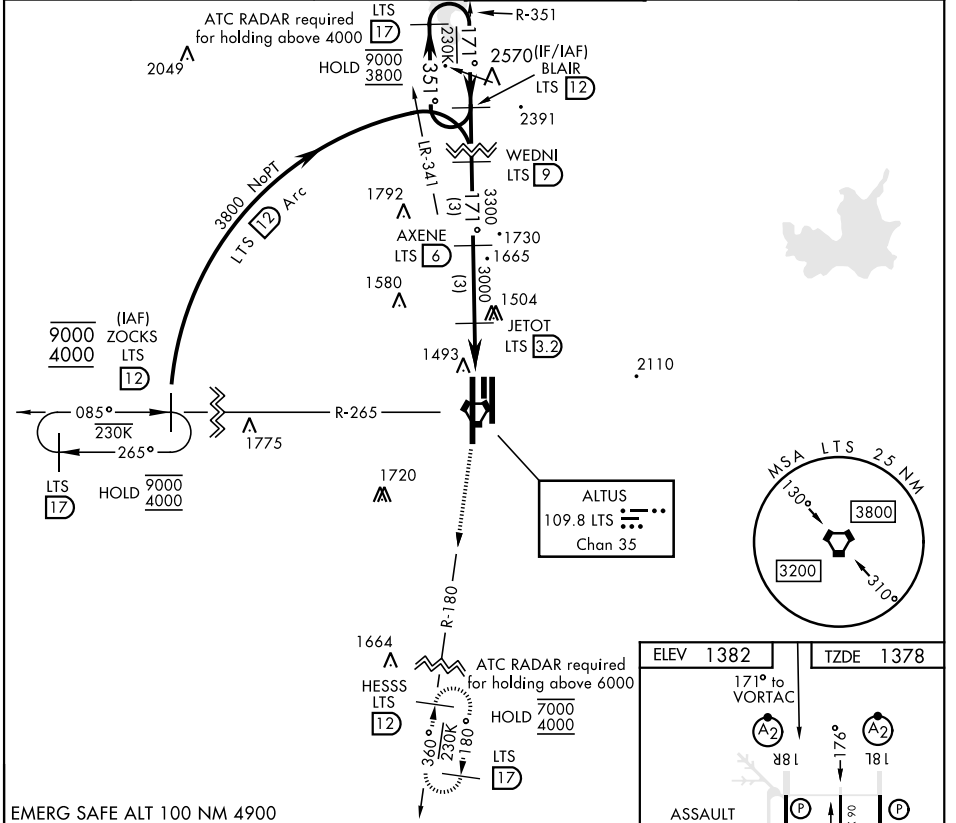
VORTAC LTS <b>109.8</b> Chan <b>35</b>	APCH CRS <b>171°</b>	Rwy Idg <b>13,440</b> TDZE <b>1378</b> Arprt Elev <b>1382</b>
--	-------------------------	---

AL-482 [USAF]

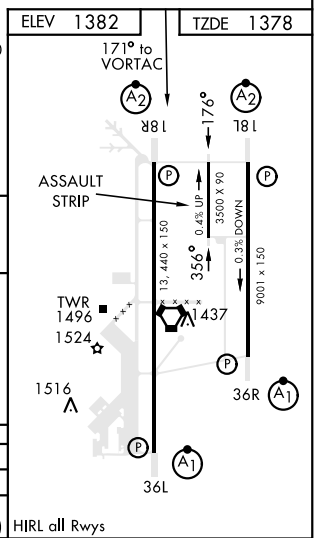
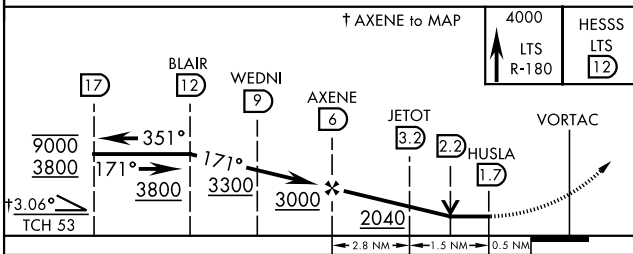
ALTUS AFB (KLTS)

DME required.	SALSF A2	MISSED APPROACH: Climb to 4000 on LTS VORTAC R-180 to HESSS and hold.
<p>▼ * When ALS inop, increase CAT AB RVR to 55 and vis to 1 mile, CAT CDE RVR to 60 and vis to 1½ miles.</p> <p>** Circling not authorized W of Rwy 18R-36L.</p>		

ATIS ★ <b>109.8 273.5</b>	FORT WORTH CENTER <b>133.5 350.35</b>	APP CON <b>125.1 353.7</b>	TOWER ★ <b>119.65 254.4</b>	GND CON <b>121.85 275.8</b>	CLNC DEL <b>120.65 284.7</b>
------------------------------	--	-------------------------------	--------------------------------	--------------------------------	---------------------------------



EMERG SAFE ALT 100 NM 4900



CATEGORY	A	B	C	D	E
S-18R *	1760/40	382 (400-¾)	1760/45	382	(400-¾)
CIRCLING **	1780-1 398 (400-1)	1840-1 458 (500-1)	1880-1½ 498 (500-1½)	2080-2¼ 698 (700-2¼)	2180-2¾ 798 (800-2¾)
HIRL all Rwys					

ALTUS, OKLAHOMA

34° 40' N-99° 16' W

ALTUS AFB (KLTS)

Amtd 4 14JUL22

# VOR or TACAN RWY 18R

SC-1, 17 APR 2025 to 15 MAY 2025

SC-1, 17 APR 2025 to 15 MAY 2025