

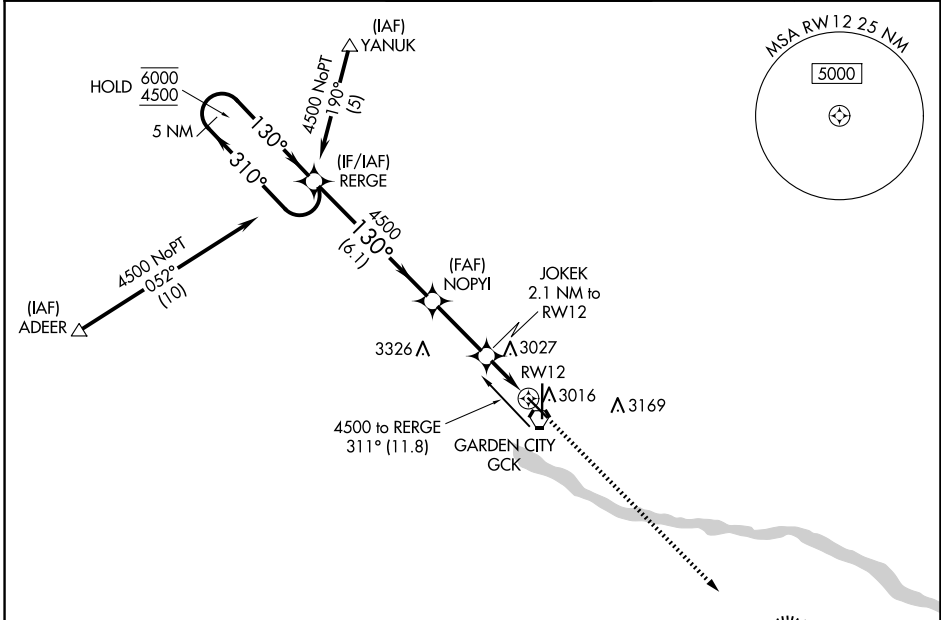
WAAS CH 77803 W12A	APP CRS 130°	Rwy ldg TDZE Apt Elev	5700 2891 2891
--	------------------------	-----------------------------	---

RNAV (GPS) RWY 12

GARDEN CITY RGNL (GCK)

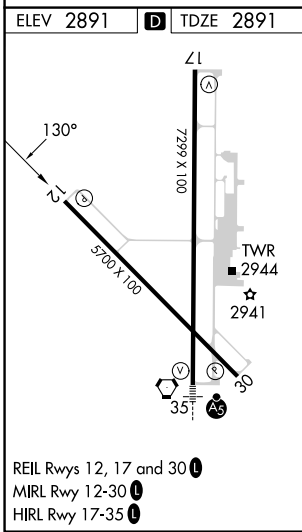
RNP APCH - GPS.		MISSED APPROACH: Climb to 4600 direct ORECA and hold.	
<p>▼ For uncompensated Baro-VNAV systems, ▲ procedure NA below -20°C or above 54°C.</p>			

ASOS 121,325	KANSAS CITY CENTER 125.2 285.425	GARDEN CITY TOWER* 118.15 (CTAF) 0 254.4	GND CON 119.0 254.4	UNICOM 122.95
------------------------	--	--	-------------------------------	-------------------------



NC-2, 17 APR 2025 to 15 MAY 2025

NC-2, 17 APR 2025 to 15 MAY 2025



<p>5 NM Holding Pattern</p> <p>6000 ← 310° → 4500</p> <p>GP 3.00° TCH 47</p>		<p>↑ 4600 ORECA</p>																										
<p>310°</p> <p>130°</p>	<p>5 NM</p> <p>REGE</p> <p>4500</p> <p>NOPYI</p> <p>JOKEK 2.1 NM to RW12</p> <p>3620</p> <p>1 NM to RW12</p> <p>RW12</p>	<p>5 NM</p> <p>ORECA</p>																										
<p>6.1 NM</p> <p>2.8 NM</p> <p>1.2 NM</p> <p>1 NM</p>																												
<table border="1"> <thead> <tr> <th>CATEGORY</th> <th>A</th> <th>B</th> <th>C</th> <th>D</th> </tr> </thead> <tbody> <tr> <td>LPV DA</td> <td></td> <td>3141-1</td> <td>250 (300-1)</td> <td></td> </tr> <tr> <td>LNAV/VNAV DA</td> <td></td> <td>3141-1</td> <td>250 (300-1)</td> <td></td> </tr> <tr> <td>LNAV MDA</td> <td></td> <td>3240-1</td> <td>349 (400-1)</td> <td></td> </tr> <tr> <td>C CIRCLING</td> <td>3320-1 429 (500-1)</td> <td>3360-1 469 (500-1)</td> <td>3480-1½ 589 (600-1½)</td> <td>3480-2 589 (600-2)</td> </tr> </tbody> </table>	CATEGORY	A	B	C	D	LPV DA		3141-1	250 (300-1)		LNAV/VNAV DA		3141-1	250 (300-1)		LNAV MDA		3240-1	349 (400-1)		C CIRCLING	3320-1 429 (500-1)	3360-1 469 (500-1)	3480-1½ 589 (600-1½)	3480-2 589 (600-2)			
CATEGORY	A	B	C	D																								
LPV DA		3141-1	250 (300-1)																									
LNAV/VNAV DA		3141-1	250 (300-1)																									
LNAV MDA		3240-1	349 (400-1)																									
C CIRCLING	3320-1 429 (500-1)	3360-1 469 (500-1)	3480-1½ 589 (600-1½)	3480-2 589 (600-2)																								