

WAAS CH <b>70714</b> <b>W23A</b>	APP CRS <b>233°</b>	Rwy Idg TDZE Apt Elev	<b>5590</b> <b>5505</b> <b>5507</b>
--	------------------------	-----------------------------	---

# RNAV (GPS) RWY 23

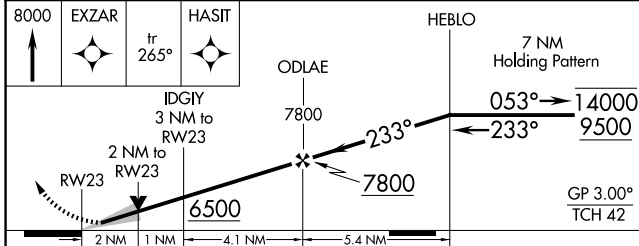
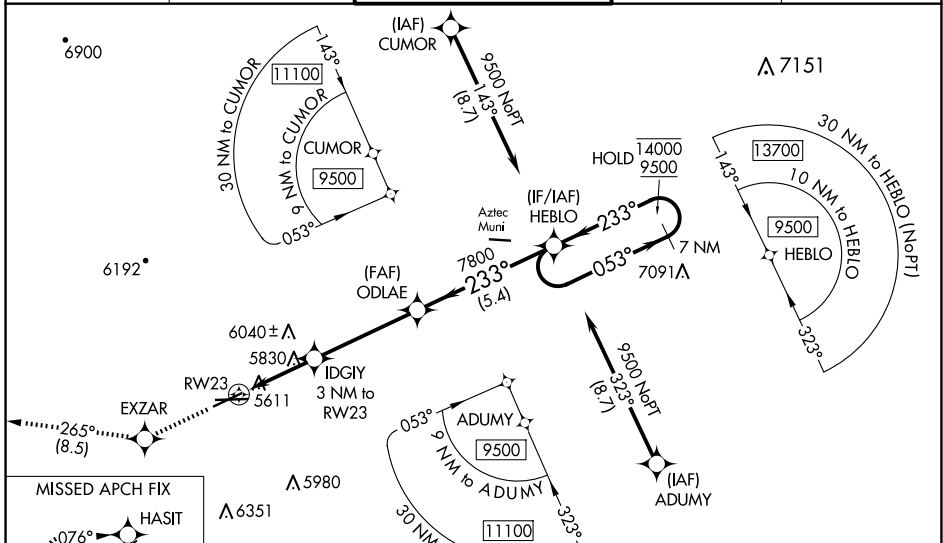
FOUR CORNERS RGNL (FMN)

RNP APCH - GPS.

**⚠** Baro-VNAV and VDP NA when using Durango altimeter setting. For uncompensated Baro-VNAV systems, LNAV/VNAV NA below -16°C or above 54°C. Circling NA for Cat D southeast of Rwy 5 and south of Rwy 25. When local altimeter setting not received, use Durango altimeter setting and increase LPV DA to 5998 feet and all visibilities  $\frac{3}{8}$  SM. Increase LNAV/VNAV DA to 6274 feet and all visibilities 1 SM. Increase all MDAs 260 feet and LNAV visibilities Cat B  $\frac{1}{4}$  SM, C/D  $\frac{3}{8}$  SM and Circling visibility Cat A/B  $\frac{1}{4}$  SM and Cat C  $\frac{1}{2}$  SM.

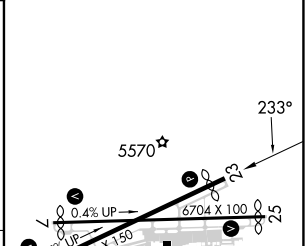
MISSED APPROACH: Climb to 8000 direct EXZAR and on track 265° to HASIT and hold.

ATIS <b>127.15</b>	DENVER CENTER <b>118.575 348.7</b>	FARMINGTON TOWER* <b>118.9 (CTAF) 257.8</b>	GND CON <b>121.7</b>	UNICOM <b>122.95</b>
-----------------------	---------------------------------------	--	-------------------------	-------------------------



ELEV 5507	<b>D</b> TDZE 5505
-----------	--------------------

CATEGORY	A	B	C	D
LPV DA		5755- $\frac{3}{4}$	250 (300- $\frac{3}{4}$ )	
LNAV/VNAV DA		6031-1 $\frac{1}{2}$	526 (600-1 $\frac{1}{2}$ )	
LNAV MDA	6080-1	575 (600-1)	6080-1 $\frac{5}{8}$	575 (600-1 $\frac{5}{8}$ )
<b>C</b> CIRCLING	6100-1 593 (600-1)	6140-1 633 (700-1)	6380-2 $\frac{1}{2}$ 873 (900-2 $\frac{1}{2}$ )	6400-3 893 (900-3)



REIL Rws 23 and 25 **Ⓛ**  
MIRL Rws 5-23 and 7-25 **Ⓛ**

SW-1, 17 APR 2025 to 15 MAY 2025

SW-1, 17 APR 2025 to 15 MAY 2025