

WAAS CH 78205 W17A	APP CRS 174°	Rwy Idg TDZE Apt Elev	7105 2878 2885
---------------------------------	------------------------	-----------------------------	---

RNAV (GPS) RWY 17

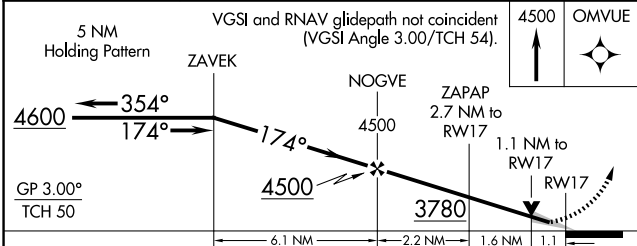
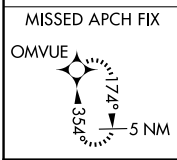
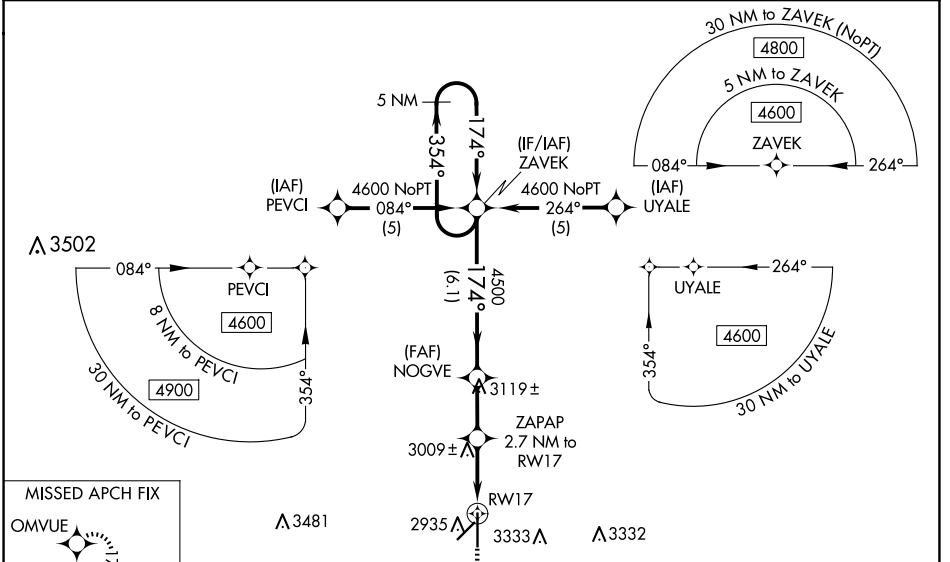
LIBERAL MID-AMERICA RGNL (L.B.L)

RNP APCH - GPS.

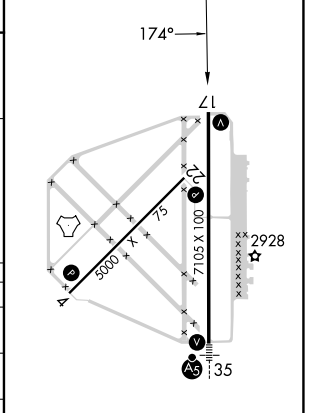
⚠ For uncompensated Baro-VNAV systems, LNAV/VNAV NA below -20°C or above 54°C. Circling NA east of Rwy 17-35. When local altimeter setting not received, use GUY altimeter setting and increase LPV DA 3240 feet; increase LNAV/VNAV DA to 3432 feet and all visibilities 1/4 SM. Increase all MDAs 120 feet and LNAV visibility Cat C/D 1/4 SM, and Circling visibility Cat C/D 1/4 SM. Baro-VNAV and VDP NA when using GUY altimeter setting.

MISSED APPROACH: Climb to 4500 direct OMVUE and hold.

AWOS-3PT 118.375	KANSAS CITY CENTER 134.0 257.625	UNICOM 122.8 (CTAF) 0
----------------------------	--	---------------------------------



ELEV 2885	D TDZE 2878
-----------	--------------------



CATEGORY	A	B	C	D
LPV DA		3128-1	250 (300-1)	
LNAV/VNAV DA		3320-1 3/8	442 (500-1 3/8)	
LNAV MDA	3260-1	382 (400-1)	3260-1 1/8	382 (400-1 1/8)
C CIRCLING	3320-1 435 (500-1)	3360-1 475 (500-1)	3400-1 1/2 515 (600-1 1/2)	3640-2 1/2 755 (800-2 1/2)

REIL Rwy 4, 17 and 22 **0**
MIRL Rwy 4-22 **0**
HIRL Rwy 17-35 **0**

NC-2, 17 APR 2025 to 15 MAY 2025

NC-2, 17 APR 2025 to 15 MAY 2025