


WAAS CH <b>63005</b> <b>W35A</b>	APP CRS <b>354°</b>	Rwy Idg TDZE Apt Elev	<b>7105</b> <b>2875</b> <b>2885</b>
--	------------------------	-----------------------------	---

# RNAV (GPS) RWY 35

LIBERAL MID-AMERICA RGNL (L.B.L.)

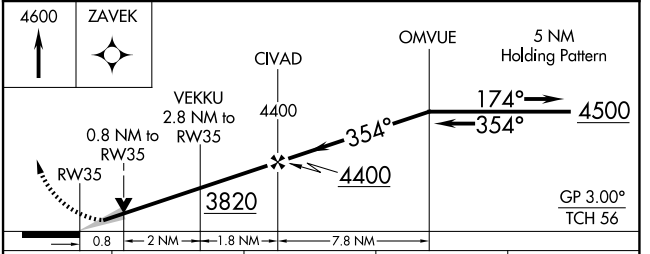
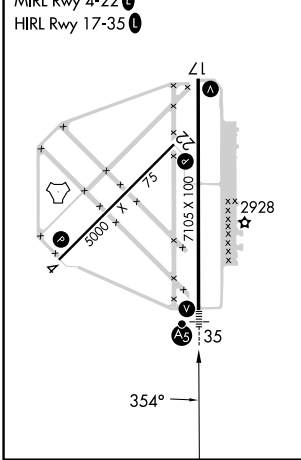
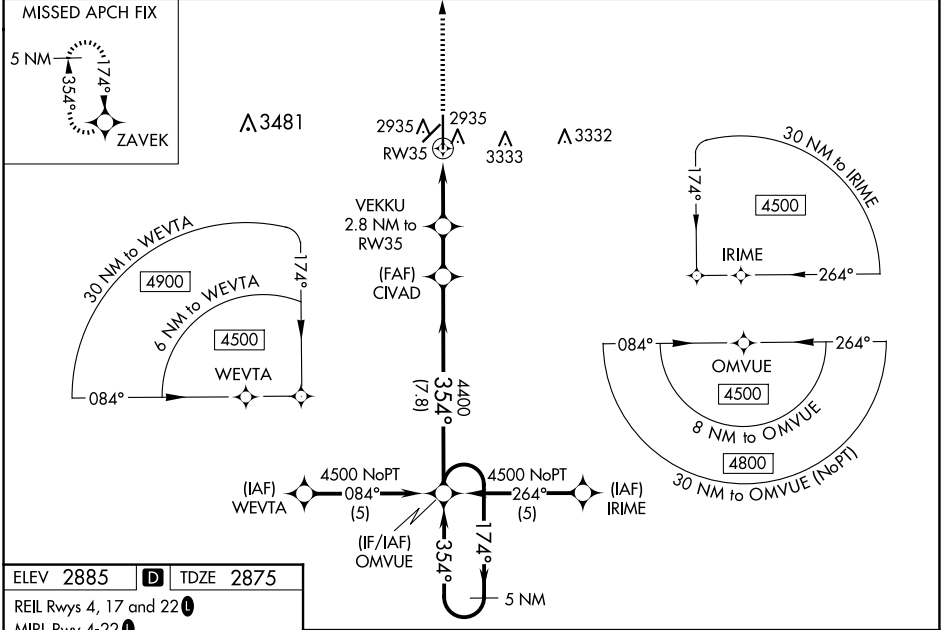
RNP APCH - GPS.

**⚠** For uncompensated Baro-VNAV systems, LNAV/VNAV NA below -20°C or above 54°C. Circling NA east of Rwy 17-35. When local altimeter setting not received, use GUY altimeter setting and increase LPV DA to 3187 feet; increase LNAV/VNAV DA to 3237 feet and all visibilities 1/8 SM. Increase all MDAs 120 feet and LNAV visibility Cat C/D 3/8 SM, and Circling visibility Cat C/D 1/2 SM. Baro-VNAV and VDP NA when using GUY altimeter setting.

MALSR 

MISSED APPROACH: Climb to 4600 direct ZAVEK and hold.

AWOS-3PT <b>118.375</b>	KANSAS CITY CENTER <b>134.0 257.625</b>	UNICOM <b>122.8 (CTAF)</b>
----------------------------	--	-------------------------------



CATEGORY	A	B	C	D
LPV DA		3075-1/2	200 (200-1/2)	
LNAV/VNAV DA		3125-1/2	250 (300-1/2)	
LNAV MDA		3200-1/2	325 (400-1/2)	
<b>C</b> CIRCLING	3280-1 395 (400-1)	3340-1 455 (500-1)	3400-1 1/2 515 (600-1 1/2)	3460-2 575 (600-2)

NC-2, 17 APR 2025 to 15 MAY 2025

NC-2, 17 APR 2025 to 15 MAY 2025