

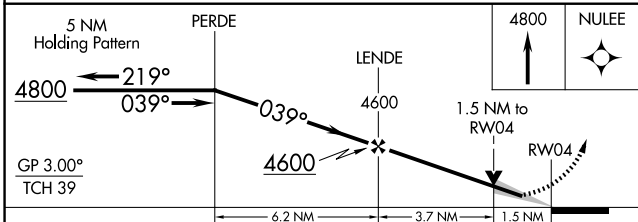
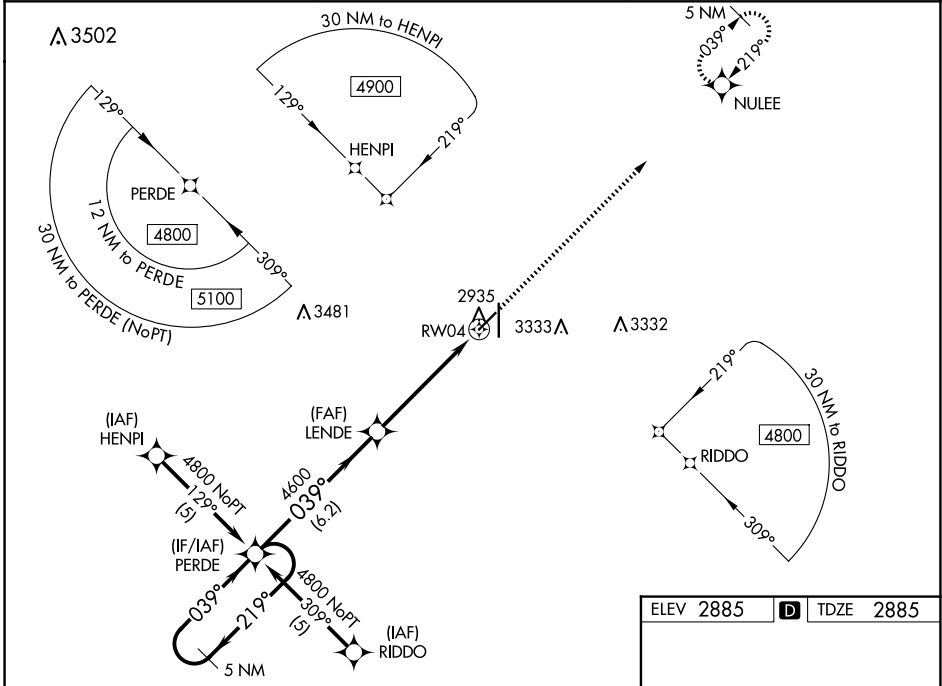
WAAS CH 72905 W04A	APP CRS 039°	Rwy Idg TDZE Apt Elev	5000 2885 2885
--	------------------------	-----------------------------	---

RNAV (GPS) RWY 4

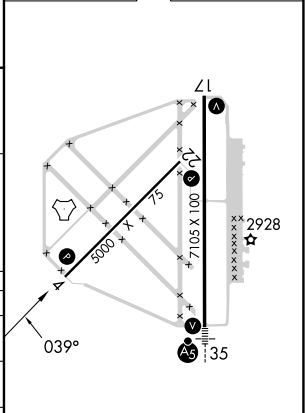
LIBERAL MID-AMERICA RGNL (L.B.L)

RNP APCH - GPS.	<p>MISSED APPROACH: Climb to 4800 direct NULEE and hold.</p>
<p>For uncompensated Baro-VNAV systems, LNAV/VNAV NA below -20°C or above 54°C. Circling NA east of Rwy 17-35. When local altimeter setting not received, use GUY altimeter setting and increase LPV DA to 3248 feet; increase LNAV/VNAV DA to 3412 feet and all visibilities $\frac{3}{8}$ SM. Increase all MDAs 120 feet and LNAV visibility Cat C/D $\frac{3}{8}$ SM, and Circling visibility Cat C/D $\frac{1}{4}$ SM. Baro-VNAV and VDP NA when using GUY altimeter setting.</p>	

AWOS-3PT 118.375	KANSAS CITY CENTER 134.0 257.625	UNICOM 122.8 (CTAF)
----------------------------	--	-------------------------------



ELEV 2885	TDZE 2885
-----------	-----------



CATEGORY	A	B	C	D
LPV DA	3136-1		251 (300-1)	
LNAV/ VNAV DA	3300-1 $\frac{3}{8}$		415 (500-1 $\frac{3}{8}$)	
LNAV MDA	3400-1 515 (600-1)		3400-1 $\frac{3}{8}$ 515 (600-1 $\frac{3}{8}$)	
C CIRCLING	3400-1 515 (600-1)		3400-1 $\frac{1}{2}$ 3640-2 $\frac{1}{2}$ 515 (600-1 $\frac{1}{2}$) 755 (800-2 $\frac{1}{2}$)	

REIL Rws 4, 17 and 22
MIRL Rwy 4-22
HIRL Rwy 17-35