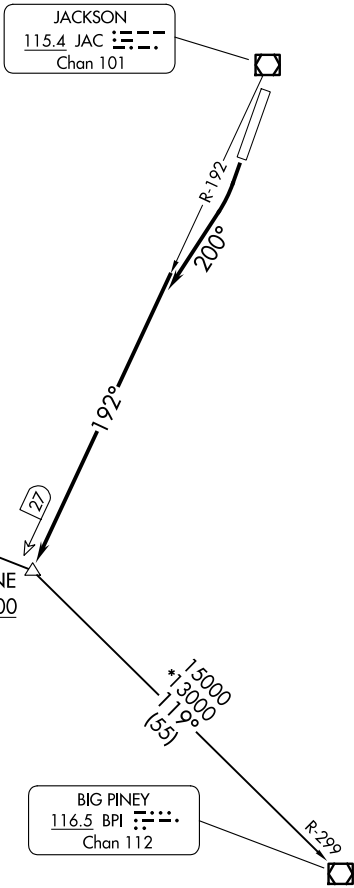
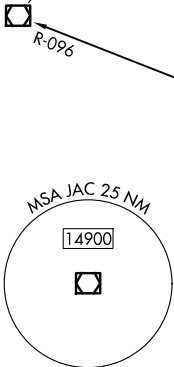


**TOP ALTITUDE:
AS ASSIGNED BY ATC**

JACKSON
115.4 JAC Chan 101

IDAHO FALLS
113.85 IDA Chan 85(Y)



NW-1, 17 APR 2025 to 15 MAY 2025

NW-1, 17 APR 2025 to 15 MAY 2025

TAKEOFF MINIMUMS

Rwy 1: NA - ATC.
Rwy 19: Standard with minimum climb of 335' per NM to 7900.

BIG PINEY
116.5 BPI Chan 112

NOTE: Chart not to scale.

DEPARTURE ROUTE DESCRIPTION

TAKEOFF RUNWAY 19: Climb on heading 200° to intercept JAC VOR/DME R-192 to KICNE INT/JAC 27 DME, cross KICNE INT at or above 15000. Then proceed on assigned transition/route. Expect further clearance to filed altitude 10 minutes after departure.

BIG PINEY TRANSITION (ALPIN4.BPI): From over KICNE INT on BPI R-299 to BPI VOR/DME.

IDAHO FALLS TRANSITION (ALPIN4.IDA): From over KICNE INT on IDA R-096 to IDA VOR/DME.