

LOC/DME I-JAC 109.1 Chan 28	APP CRS 187°	Rwy Idg TDZE Apt Elev 6300 6451 6451
--	------------------------	--

ILS Y or LOC Y RWY 19

JACKSON HOLE (JAC)

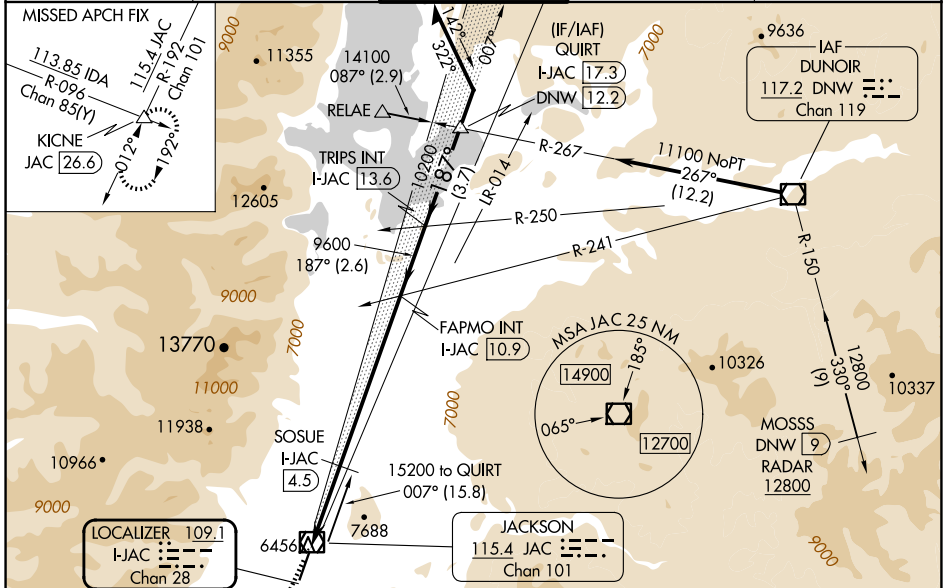
RADAR required for procedure entry at MOSSS.

MAIS MISSED APPROACH: Climb to 14000 on JAC VOR/DME R-192 to KICNE INT/JAC VOR/DME 26.6 DME and hold, continue climb-in-hold to 14000.

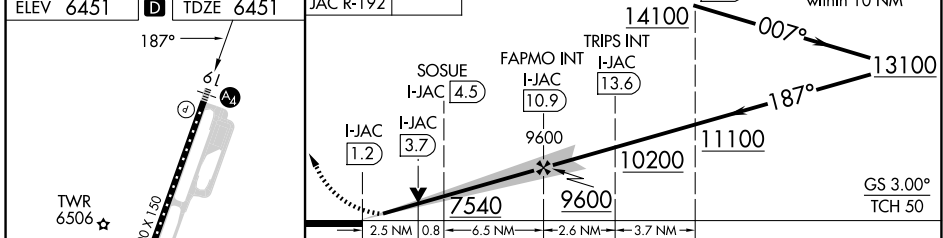
W Circling NA for Cats A, B and C east of Rwy 1-19. Circling NA for Cat D. For inop ALS, increase SOSUE fix minimums S-LOC 19 Cats C and D visibility to 2½ SM. For inop ALS, increase S-LOC Cat C and D visibility to 3 SM.

-22°C

D-ATIS 120.625	SALT LAKE CENTER 133.25 285.6	JACKSON TOWER* 118.075 (CTAF) 0	GND CON 124.55	UNICOM 122.95
--------------------------	---	--	--------------------------	-------------------------



ELEV 6451	D	TDZE 6451	JAC R-192	Use I-JAC DME when on the localizer course.	QUIRT I-JAC 17.3 DNW 12.2	Remain within 10 NM
-----------	----------	-----------	-----------	---	------------------------------	---------------------



CATEGORY	A	B	C	D
S-ILS 19	7077-1½ 626 (700-1½)			
S-LOC 19	7540/55 1089 (1100-1)	7540-1¼ 1089 (1100-1¼)	7540-2½ 1089 (1100-2½)	1089 (1100-2½)
C CIRCLING	7540-1¼ 1089 (1100-1¼)	7540-1½ 1089 (1100-1½)	7540-3 1089 (1100-3)	NA
SOSUE FIX MINIMUMS (DME REQUIRED)				
S-LOC 19	7300/40 849 (900-¾)	7300/55 849 (900-1)	7300-2 849 (900-2)	849 (900-2)
C CIRCLING	7300-1¼ 849 (900-1¼)	849 (900-1¼)	7400-2¾ 949 (1000-2¾)	NA

FAF to MAP 9.7 NM					
Knots	60	90	120	150	180
Min:Sec	9:42	6:28	4:51	3:53	3:14

NW-1, 17 APR 2025 to 15 MAY 2025

NW-1, 17 APR 2025 to 15 MAY 2025