

ILS Z or LOC Z RWY 19

JACKSON HOLE (JAC)

LOC/DME I-JAC 109.1 Chan 28	APP CRS 187°	Rwy Idg 6300 TDZE 6451 Apt Elev 6451
--	------------------------	---

DME required for LOC only. RNAV 1-GPS required. RADAR required for procedure entry at MOSSS.

▼ Circling NA for Cats A, B, and C east of Rwy 1-19. Inop table does not apply to S-ILS 19*. Circling NA for Cat D. For inop ALS increase S-LOC 19# Cats C and D visibility to RVR 4500.

▲ -22°C

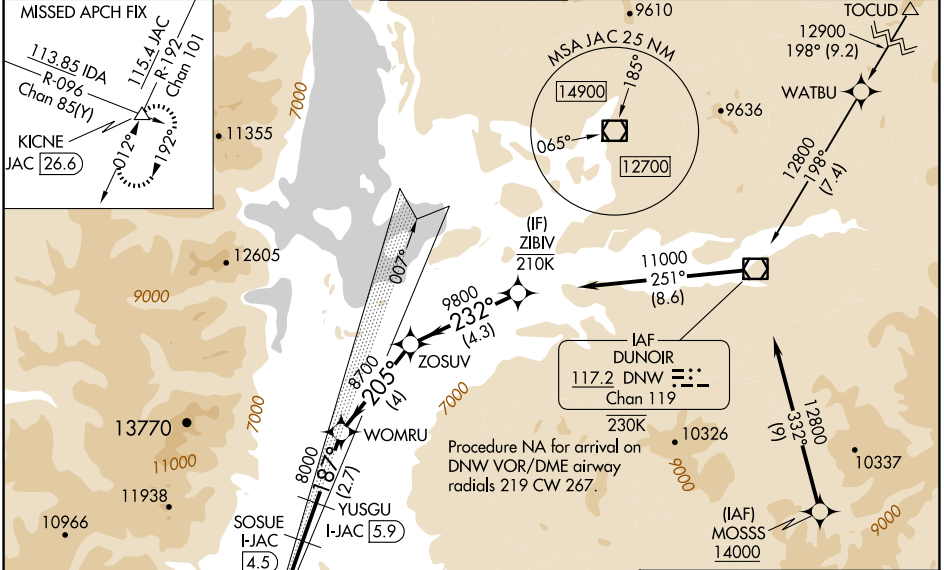
MALS

MISSED APPROACH: Climb to 6900 then climbing right turn to 14000 on JAC VOR/DME R-192 to KICNE INT/JAC 26.6 DME and hold, continue climb-in-hold to 14000.

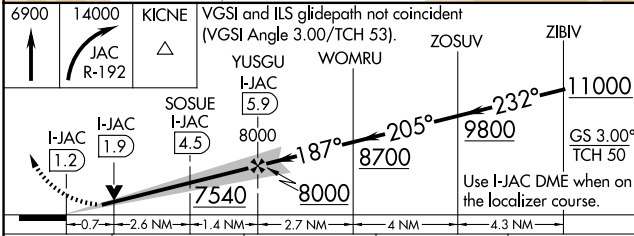
*Missed approach requires minimum climb of 225 feet per NM to 9400; if unable to meet gradient, see ILS Y or LOC Y RWY 19.

#Missed approach requires minimum climb of 234 feet per NM to 9600; if unable to meet climb gradient, see ILS Y or LOC Y RWY 19.

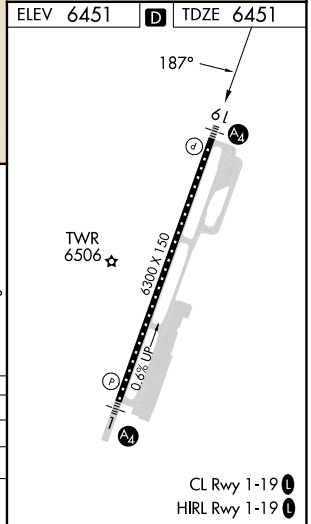
D-ATIS 120.625	SALT LAKE CENTER 133.25 285.6	JACKSON TOWER* 118.075 (CTAF)	GND CON 124.55	UNICOM 122.95
--------------------------	---	--	--------------------------	-------------------------



ELEV 6451	D	TDZE 6451
-----------	---	-----------



CATEGORY	A	B	C	D
S-ILS 19*		6651/40	200 (200-¾)	
S-LOC 19#		6720/40	269 (300-¾)	
CIRCLING	6840-1 389 (400-1)	6960-1 509 (600-1)	7440-3 989 (1000-3)	NA



NW-1, 17 APR 2025 to 15 MAY 2025

NW-1, 17 APR 2025 to 15 MAY 2025