

APP CRS	Rwy Idg	6300
190°	TDZE	6451
	Apt Elev	6451

RNAV (RNP) X RWY 19

JACKSON HOLE (JAC)

RNP AR APCH-GPS.

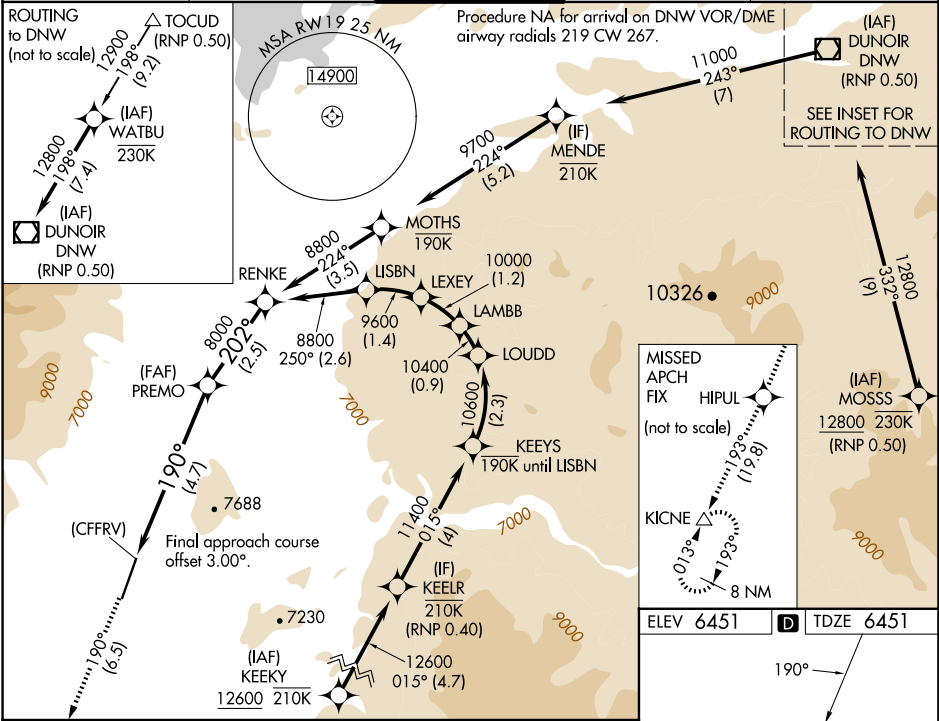
▼ For uncompensated Baro-VNAV systems, procedure NA below -27°C or above 54°C. For inop ALS, increase RNP 0.20# all Cats visibility to RVR 6000. For inop ALS, increase RNP 0.30 all Cats visibility to 1 1/4 SM.

MALS

11400

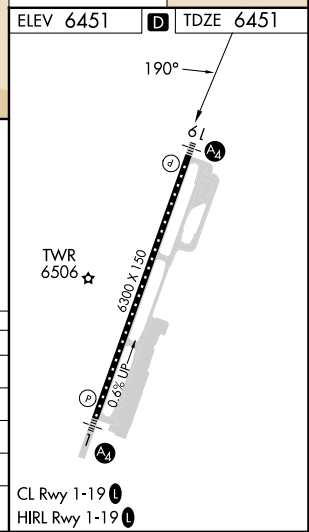
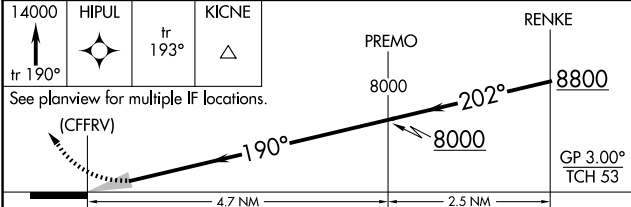
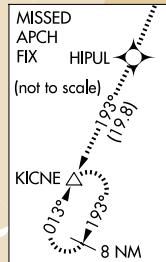
MISSED APPROACH: Climb to 14000 on track 190° to HIPUL and on track 193° to KICNE and hold, continue climb-in-hold to 14000. *Missed approach requires minimum climb of 226 feet per NM to 11600. #Missed approach requires minimum climb of 215 feet per NM to 11600.

D-ATIS 120.625	SALT LAKE CENTER 133.25 285.6	JACKSON TOWER* 118.075 (CTAF)	GND CON 124.55	UNICOM 122.95
--------------------------	---	---	--------------------------	-------------------------



NW-1, 17 APR 2025 to 15 MAY 2025

NW-1, 17 APR 2025 to 15 MAY 2025



CATEGORY	A	B	C	D
RNP 0.10 DA*		6777/40	326 (400-3/4)	
RNP 0.20 DA#		6856/50	405 (500-1)	
RNP 0.30 DA#		6938/60	487 (500-1 1/4)	
RNP 0.30 DA		7045-1 3/8	594 (600-1 1/8)	

AUTHORIZATION REQUIRED