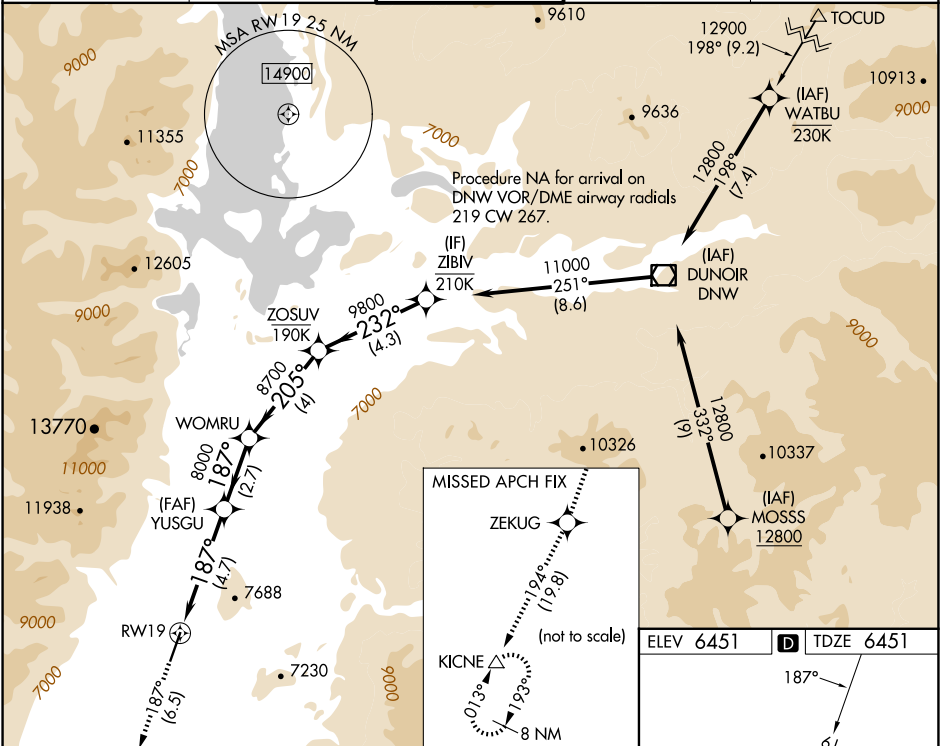


APP CRS	Rwy Idg	6300
187°	TDZE	6451
	Apt Elev	6451

RNAV (RNP) Y RWY 19

JACKSON HOLE (JAC)

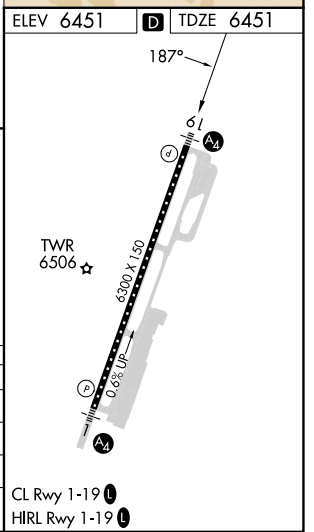
RNP AR APCH-GPS.		MALS 	MISSED APPROACH: Climb to 14000 on track 187° to ZEKUG and on track 194° to KICNE and hold, continue climb-in-hold to 14000. *Missed approach requires minimum climb of 226 feet per NM to 11400. #Missed approach requires minimum climb of 210 feet per NM to 11600.		
For uncompensated Baro-VNAV systems, procedure NA below -27°C or above 54°C. For inop ALS, increase RNP 0.30 all Cats visibility to 1 3/4 SM.					
D-ATIS	SALT LAKE CENTER	JACKSON TOWER*	GND CON	UNICOM	
120.625	133.25 285.6	118.075 (CTAF)	124.55	122.95	



NW-1, 17 APR 2025 to 15 MAY 2025

NW-1, 17 APR 2025 to 15 MAY 2025

14000	ZEKUG	KICNE	WOMRU		ZOSUV	ZIBIV
↑ tr 187°		tr 194°				11000
			YUSGU			
			8000			
			8000			
			8700			
			9800			
			232°			
			187°			
			205°			
			4.7 NM			
			2.7 NM			
			4 NM			
			4.3 NM			
CATEGORY	A	B	C	D		
RNP 0.11 DA*	6781/40		330 (400-3/4)			
RNP 0.30 DA#	6935/60		484 (500-1 1/4)			
RNP 0.30 DA	7038-1 3/8		587 (600-1 3/8)			



AUTHORIZATION REQUIRED