


APP CRS Rwy Idg **6300**  
 TDZE **6431**  
 Apt Elev **6451**

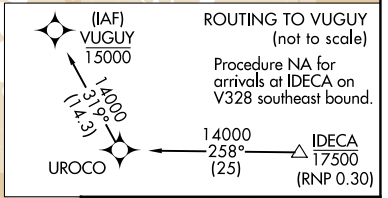
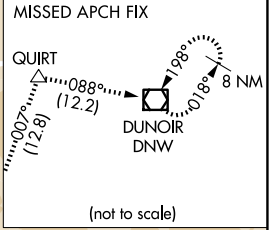
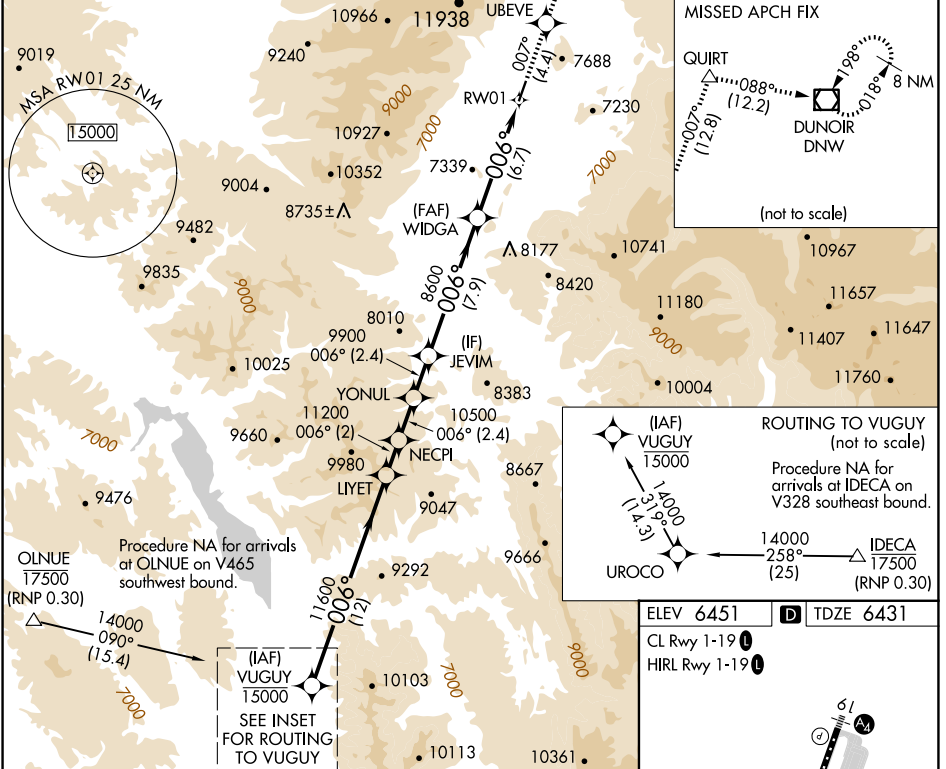
# RNAV (RNP) Z RWY 1

JACKSON HOLE (JAC)

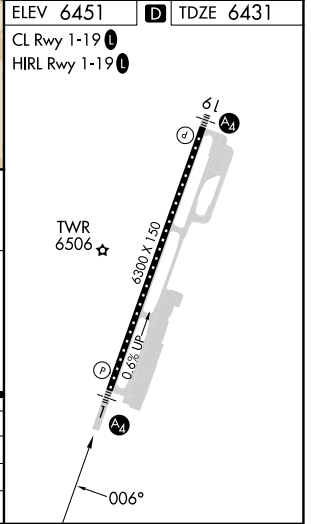
RNP AR APCH.  
 For uncompensated Baro-VNAV systems, procedure NA below -27°C or above 54°C.  
 Inop table does not apply to RNP 0.11\* all Cats visibility.  
 For inop ALS, increase RNP 0.30\* all Cats visibility to 7/8 SM.  
 Missed approach requires RNP less than 1.0.

MALS   
 MISSED APPROACH: Climb to 14000 on track 007° to UBEVE and track 007° to QUIRT and track 088° to DNW VOR/DME and hold, continue climb-in-hold to 14000.  
 \* Missed approach requires minimum climb of 330 feet per NM to 8200; if unable to meet climb gradient, see RNAV (RNP) Y RWY 1.

D-ATIS <b>120.625</b>	SALT LAKE CENTER <b>133.25 285.6</b>	JACKSON TOWER* <b>118.075</b> (CTAF) 	GND CON <b>124.55</b>	UNICOM <b>122.95</b>
--------------------------	---	---	--------------------------	-------------------------



VUGUY	LYET	NECPI	YONUL	UBEVE	QUIRT	DNW
14000	11600	11200	10500	8600	8600	8600
GP 3.00° TCH 50						
	12 NM	2 NM	2.4	2.4	7.9 NM	6.7 NM
CATEGORY	A	B	C	D		
RNP 0.11 DA*		6690-3/4	259 (300-3/4)			
RNP 0.30 DA*		6743-3/4	312 (300-3/4)			



**AUTHORIZATION REQUIRED**

NW-1, 17 APR 2025 to 15 MAY 2025

NW-1, 17 APR 2025 to 15 MAY 2025