

JACKSON, WYOMING

AL-504 (FAA)

24305

WAAS CH 58299 W01A	APP CRS 006°	Rwy Idg 6300 TDZE 6431 Apt Elev 6451
----------------------------------------	------------------------	-----------------------------------------------------------------

RNAV (GPS) X RWY 1

JACKSON HOLE (JAC)

RNP APCH-GPS.

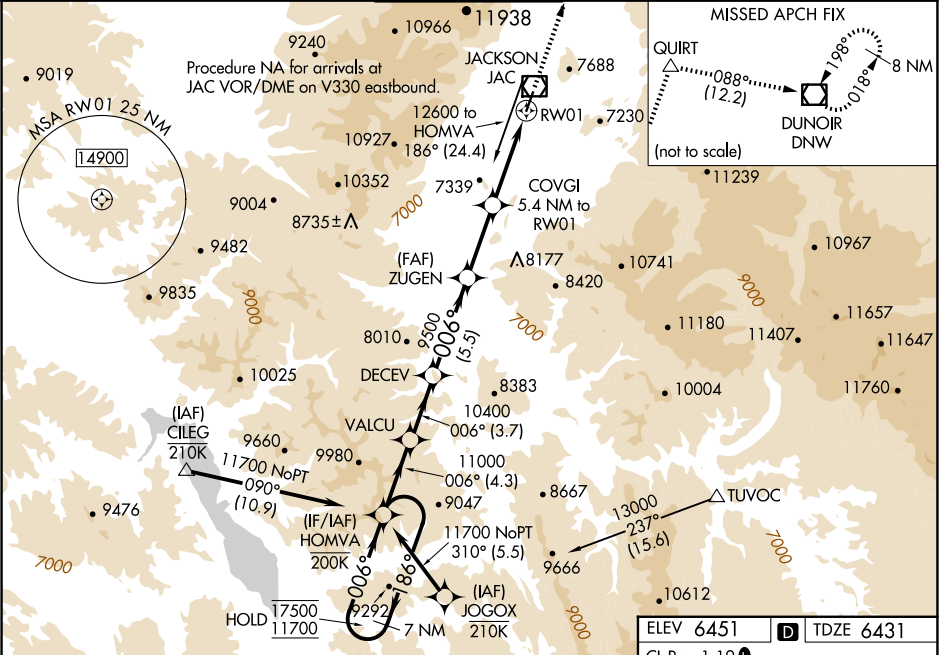
⚠ Circling NA east of Rwy 1-19. Baro-VNAV NA.
 ⚠ Circling NA for Cat D. Inop table does not apply to LPV, LPV*, LNAV/VNAV, and LNAV Cat C/D.
 🌡 -22°C

MALS

 A2

MISSED APPROACH: Climb to 14000 direct QUIRT and on track 088° to DNW VOR/DME and hold, continue climb-in-hold to 14000.
 *Missed approach requires minimum climb of 385 feet per NM to 7700.

D-ATIS 120.625	SALT LAKE CENTER 133.25 285.6	JACKSON TOWER* 118.075 (CTAF) 1	GND CON 124.55	UNICOM 122.95
--------------------------	-----------------------------------------	-------------------------------------------	--------------------------	-------------------------



7 NM Holding Pattern 	HOMVA 7 NM Holding Pattern	VALCU 3.7 NM to DECEV	DECEV 5.5 NM to ZUGEN	ZUGEN 4.1 NM to COVGI	COVGI 2.1 NM to RWY01	RWY01 3.4 NM from RWY01
ELEV 6451	CL Rwy 1-19	TDZE 6431	QUIRT	Ir 088°	DNW	TWR 6506
17500 ← 186°		11700 → 006°		11000 → 006°		
GP 3.00° TCH 50		9500		8180		
CATEGORY	A	B	C	D		
LPV DA*	6651/40		220 (200-¾)			
LPV DA	7445-4		1014 (1000-4)			
LNAV/VNAV DA	7327-4		896 (900-4)			
LNAV MDA	7540/55	7540-1¼	7540-3	1109 (1100-3)		
CIRCLING	7540-1¼	7540-1½	7560-3	NA		
	1089 (1100-1¼)	1089 (1100-1½)	1109 (1200-3)			

NW-1, 17 APR 2025 to 15 MAY 2025

NW-1, 17 APR 2025 to 15 MAY 2025

JACKSON, WYOMING
 Amdt 2 02DEC21

43°36'N-110°44'W

JACKSON HOLE (JAC)

RNAV (GPS) X RWY 1