

WAAS CH <b>97624</b> <b>W13A</b>	APP CRS <b>132°</b>	Rwy Idg TDZE Apt Elev	<b>5005</b> <b>264</b> <b>264</b>
--	------------------------	-----------------------------	---

# RNAV (GPS) RWY 13

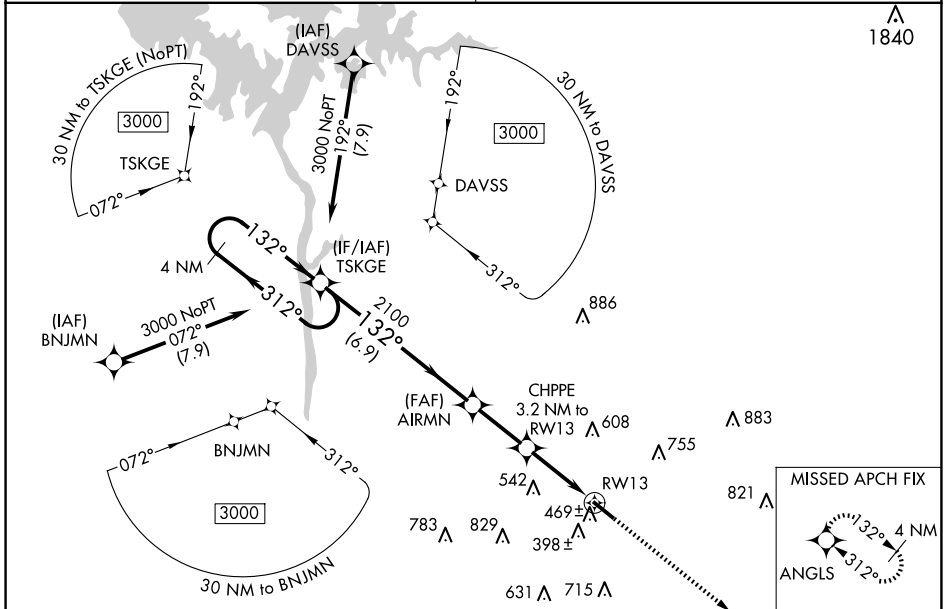
MOTON FLD MUNI (Ø6A)

**▽** Baro-VNAV NA. DME/DME RNP-0.3 NA. Use Montgomery altimeter setting; when not received, use Troy Muni at N Kenneth Campbell Fld altimeter setting and increase all DA 18 feet and all MDA 20 feet; increase Circling Cats B and C visibility ¼ mile. Helicopter visibility reduction below ¾ SM NA.

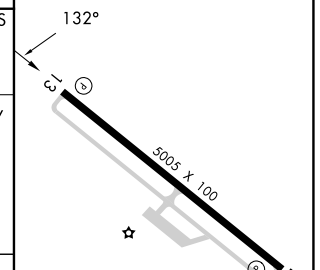
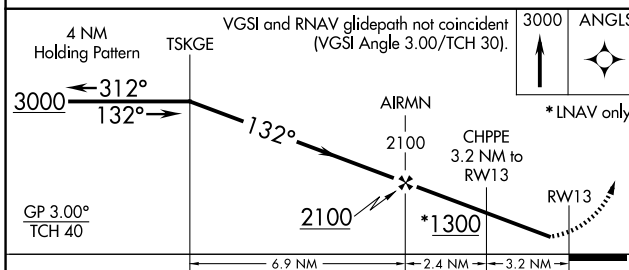
**▲** NA MISSED APPROACH: Climb to 3000 direct ANGLES and hold.

ATLANTA APP CON ★  
**125.5 323.1**

UNICOM  
**122.8 (CTAF) Ø**



ELEV 264	TDZE 264
----------	----------



CATEGORY	A	B	C	D
LPV DA		661-1 <sup>3</sup> / <sub>8</sub>	397 (400-1 <sup>3</sup> / <sub>8</sub> )	
LNAV/VNAV DA		798-1 <sup>7</sup> / <sub>8</sub>	534 (600-1 <sup>7</sup> / <sub>8</sub> )	
LNAV MDA	820-1	556 (600-1)	820-2 <sup>5</sup> / <sub>8</sub>	556 (600-2 <sup>5</sup> / <sub>8</sub> )
<b>C</b> CIRCLING	960-1 696 (700-1)	1060-1 796 (800-1)	1200-2 <sup>3</sup> / <sub>4</sub> 936 (1000-2 <sup>3</sup> / <sub>4</sub> )	1260-3 996 (1000-3)

MIRL Rwy 13-31 Ø

SE-4, 17 APR 2025 to 15 MAY 2025

SE-4, 17 APR 2025 to 15 MAY 2025