

# ARGUS FIVE DEPARTURE (ARGUS5.ARGUS)

YUMA, ARIZONA

RADAR required

ATIS  
 118.8 273.5  
 CLNC DEL  
 118.0 336.4  
 GND CON  
 121.9 314.0  
 TOWER  
 119.3 (CTAF) 377.075  
 DEP CON  
 125.55 282.325

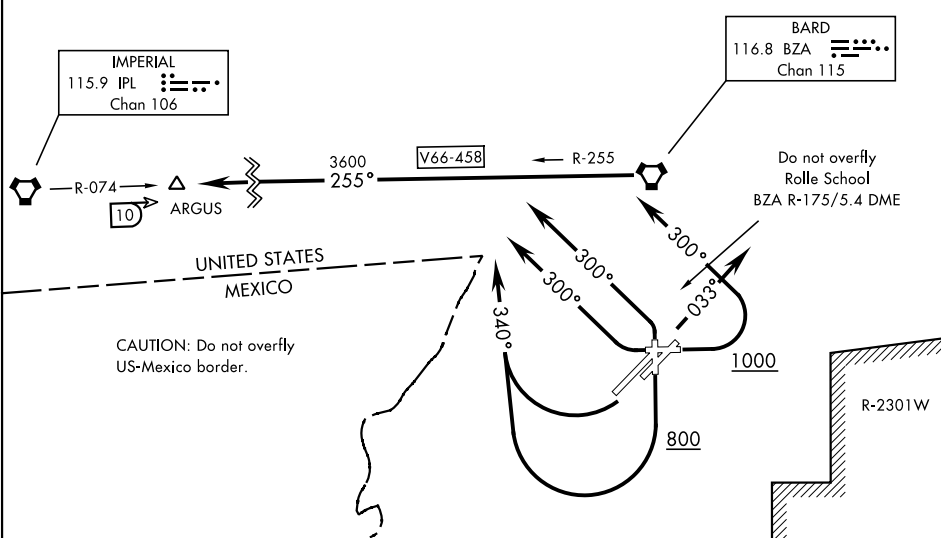
[USN]

2126

**IMPERIAL**  
 115.9 IPL  
 Chan 106

**BARD**  
 116.8 BZA  
 Chan 115

SW-4, 17 APR 2025 to 15 MAY 2025



SW-4, 17 APR 2025 to 15 MAY 2025

## DEPARTURE ROUTE DESCRIPTION

**TAKEOFF RWY 3L/R:** Climb heading 033°, then RADAR vectors to intercept BZA VORTAC R-255. Thence...

**TAKEOFF RWY 8:** Climb heading 078° to 1000, then climbing left turn heading 300°, then RADAR vectors to intercept BZA VORTAC R-255. Thence...

**TAKEOFF RWY 17:** Climb heading 168° to 800, then climbing right turn heading 340°, then RADAR vectors to intercept BZA VORTAC R-255. Thence...

**TAKEOFF RWY 21L/R:** Climbing right turn heading 340°, then RADAR vectors to intercept BZA VORTAC R-255. Thence...

**TAKEOFF RWY 26:** Climbing right turn heading 300°, then RADAR vectors to intercept BZA VORTAC R-255. Thence...

**TAKEOFF RWY 35:** Climbing left turn heading 300°, then RADAR vectors to intercept BZA VORTAC R-255. Thence...

...via BZA R-255 to ARGUS, then via assigned route. Maintain assigned altitude. Expect clearance to filed altitude/flight level 10 minutes after departure.

# ARGUS FIVE DEPARTURE (ARGUS5.ARGUS)

YUMA, ARIZONA

Orig 22APR21

YUMA MCAS/YUMA INTL (KNYL)