

# CARGO ONE DEPARTURE (CARGO1.CARGO)

YUMA MCAS/YUMA INTL (KNYL)

YUMA, ARIZONA

ATIS  
 118.8 273.5  
 CLNC DEL  
 118.0 336.4  
 GND CON  
 121.9 314.0  
 TOWER  
 119.3 (CTAF) 377.075  
 DEP CON  
 125.55 282.325

[USN]

Rwy	Knots	60	120	180	240	300	360
3L/R	V/V(fpm)	225	450	675	900	1125	1350
26	V/V(fpm)	210	420	630	840	1050	1260
35	V/V(fpm)	241	482	723	964	1205	1446

This departure will be filed/assigned for aircraft not carrying external ordnance when RADAR services are not available.

Rwy 8: Do not exceed 270 KIAS until 1000  
 Rwy 35: Cross BZA VORTAC at or below 14,000  
 Max 300 KIAS until SALUD

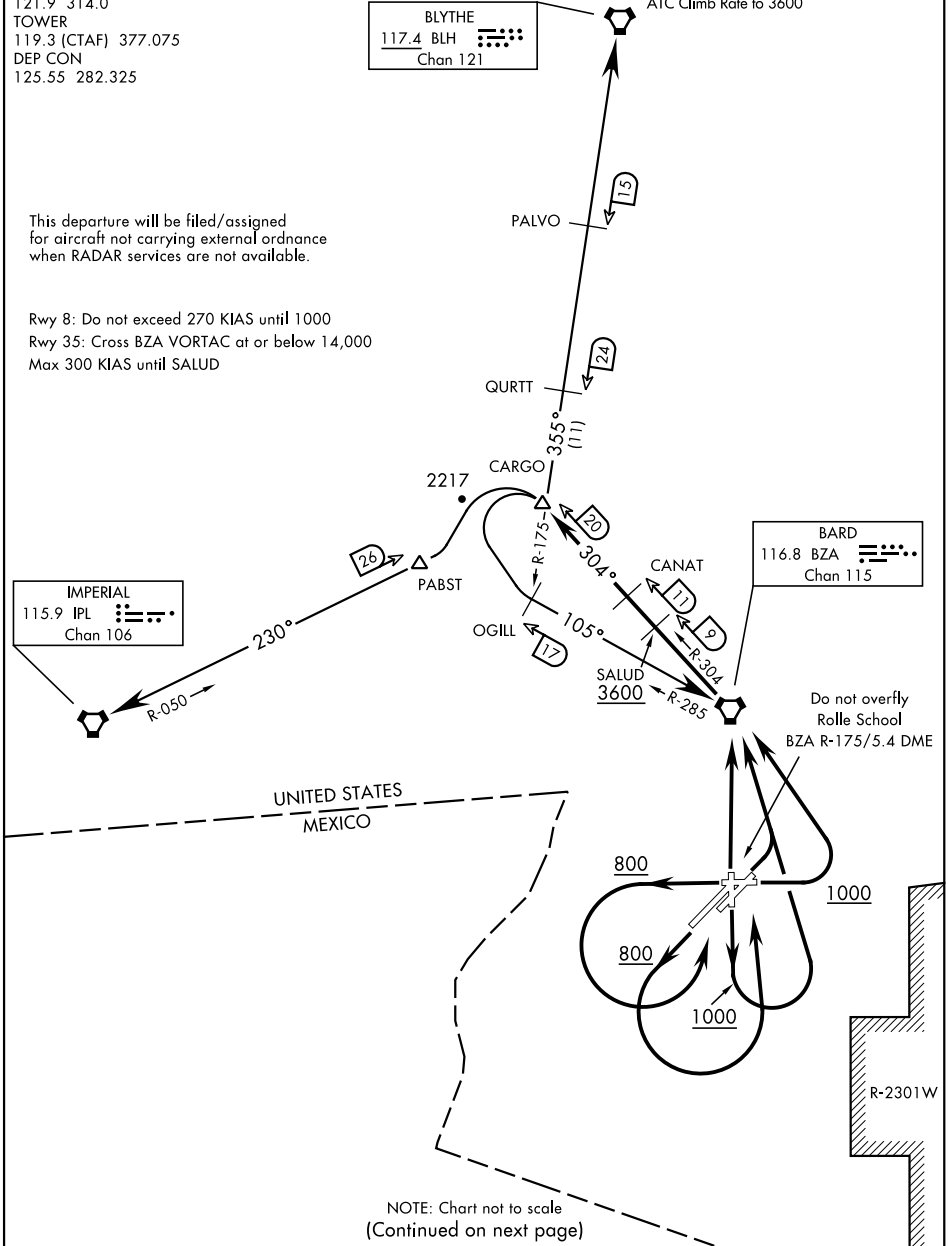
BLYTHE  
 117.4 BLH  
 Chan 121

ATC Climb Rate to 3600

IMPERIAL  
 115.9 IPL  
 Chan 106

BARD  
 116.8 BZA  
 Chan 115

Do not overfly  
 Rolle School  
 BZA R-175/5.4 DME



NOTE: Chart not to scale  
 (Continued on next page)

# CARGO ONE DEPARTURE (CARGO1.CARGO)

YUMA, ARIZONA

YUMA MCAS/YUMA INTL (KNYL)

SW-4, 17 APR 2025 to 15 MAY 2025

SW-4, 17 APR 2025 to 15 MAY 2025