

HI-TACAN Z RWY 3L

TACAN NYL Chan 84	APCH CRS 039°	Rwy Idg 13,300 TDZE 195 Arpt Elev 213
-----------------------------	-------------------------	--

[USN]

YUMA MCAS/YUMA INTL (KNYL)

MISSED APPROACH: Climbing left turn to 4000, intercept NYL TACAN R-022 to JIBUN, cross JIBUN at or above 4000.

ATIS 118.8 273.5	APP CON 124.7 371.975	TOWER 119.3 (CTAF) 0 377.075	GND CON 121.9 314.0	CLNC DEL 118.0 336.4	ASR/PAR
----------------------------	---------------------------------	--	-------------------------------	--------------------------------	---------

Knots	60	120	180	240	300	360
V/V(fpm)	325	650	975	1300	1625	1950

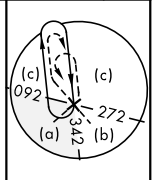
ATC climb of 325 ft/NM to 4000

Request holding from Los Angeles ARTCC prior to frequency change to MCAS Yuma Approach Control.

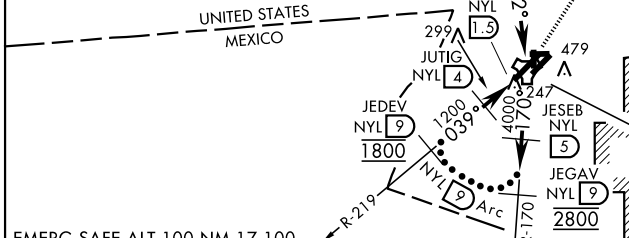
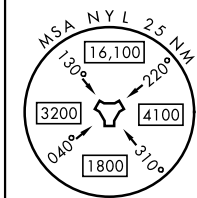
CAUTION:
R-2507 and R-2512 located approximately 33 NM/28 NM NW respectively of NYL TACAN.

CAUTION:
Short intmed, recommended early configuration.

BLYTHE
117.4 BLH
Chan 121



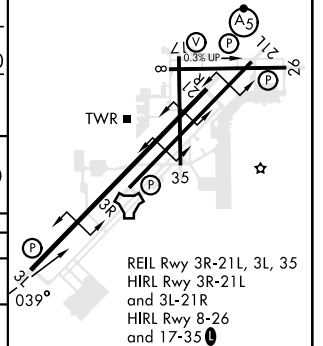
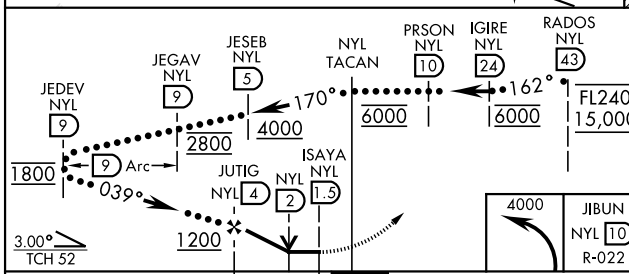
3701



EMERG SAFE ALT 100 NM 17,100

ELEV	213	TDZE	195
------	-----	------	-----

3L-21R	13,300 x 200
3R-21L	9239 x 150
8-26	6146 x 150
17-35	5710 x 150



CATEGORY	C	D	E
S-3L	560-1	365	(400-1)
CIRCLING	800-1½ 587 (600-1½)	800-2 587 (600-2)	

HI-TACAN Z RWY 3L

SW-4, 17 APR 2025 to 15 MAY 2025

SW-4, 17 APR 2025 to 15 MAY 2025