

YUMA, ARIZONA

RNAV (GPS) RWY 21R

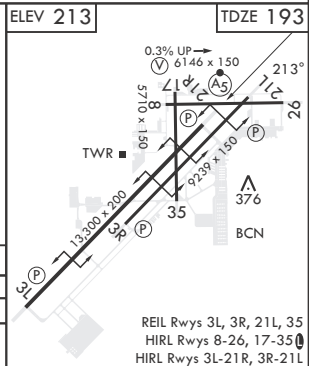
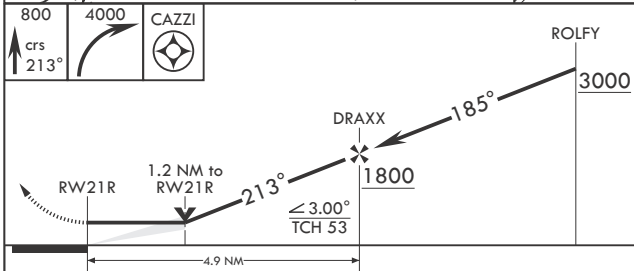
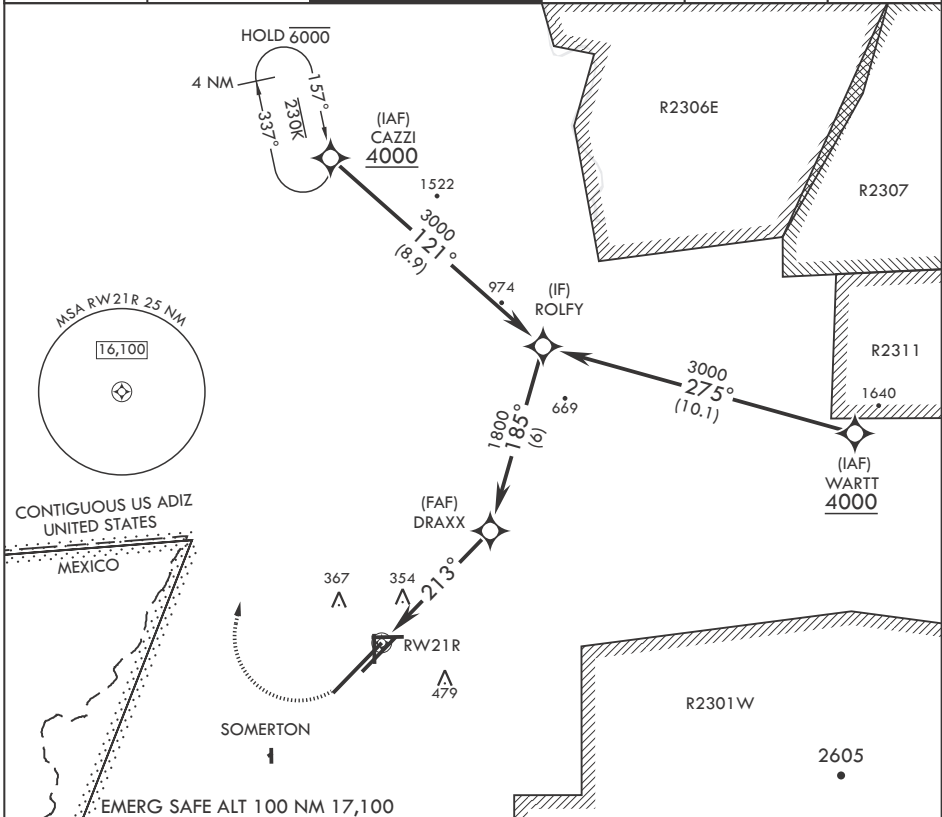
APCH CRS	Rwy Idg	13,300
213°	TDZE	193
	Arprt Elev	213

- (USN)

YUMA MCAS YUMA INTL (KNYL)

RNP APCH	MALSR	MISSED APPROACH: Climb to 800 then, climbing right turn to 4000 direct CAZZI and hold. Continue climb in hold to 4000.
▼ * When ALS inop, increase CAT AB vis to 1 mile, CAT CD vis to 1 1/4 miles.	AS	

ATIS	APP CON	TOWER	GND CON	CLNC DEL	ASR/PAR
118.8 273.5	124.7 371.975	119.3 (CTAF) 377.075	121.9 314.0	118.0 336.4	



CATEGORY	A	B	C	D
LNAV MDA*	620-1/2 427 (500-1/2)	700-1 427 (500-3/4)	620-3/4 427 (500-3/4)	800-1 427 (500-3/4)
◻ CIRCLING	680-1 467 (500-1)	700-1 487 (500-1)	800-1 587 (600-1 1/2)	800-2 587 (600-2)

YUMA, ARIZONA
Amdt 5 22APR21

32°39'N - 114°36'W

YUMA MCAS YUMA INTL (KNYL)

RNAV (GPS) RWY 21R

SW-4, 17 APR 2025 to 15 MAY 2025

SW-4, 17 APR 2025 to 15 MAY 2025