

YUMA, ARIZONA

VOR/DME or TACAN RWY 17

VORTAC BZA 116.8 Chan 115	APCH CRS 167°	Rwy Idg TDZE Arpt Elev 5710 197 213
---	-------------------------	---

[USN]

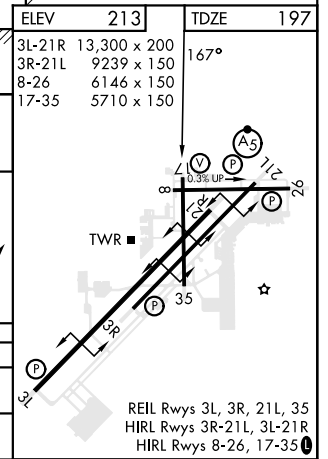
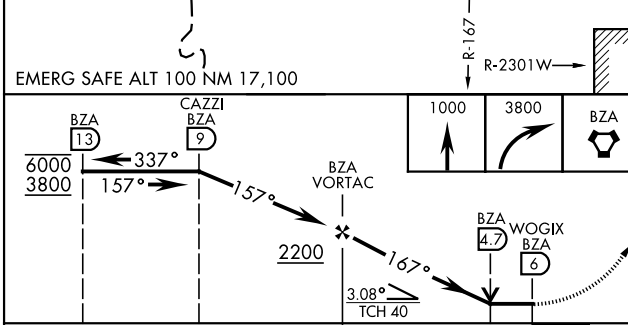
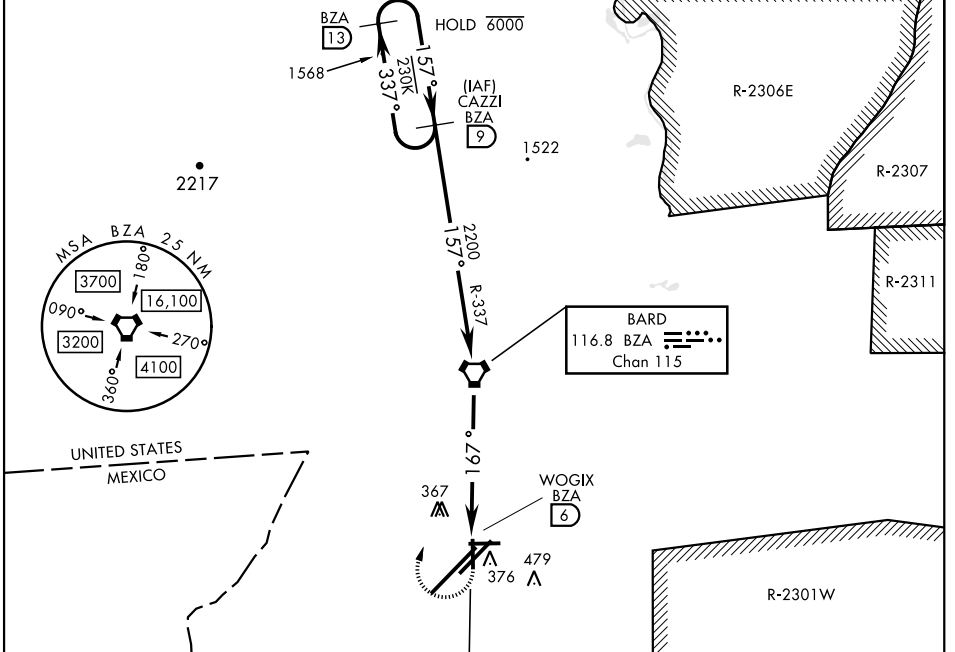
YUMA MCAS/YUMA INTL (KNYL)

MISSED APPROACH: Climb to 1000, then climbing right turn to 3800 direct BZA VORTAC and BZA R-337 to CAZZI and hold.

ATIS 118.8 273.5	APP CON 124.7 371.975	TOWER 119.3 (CTAF) 0 377.075	GND CON 121.9 314.0	CLNC DEL 118.0 336.4	ASR/ PAR
----------------------------	---------------------------------	---	-------------------------------	--------------------------------	-------------

Knots	60	120	180	240	300	360
V/V(fpm)	210	420	630	840	1050	1260

Min climb of 210 ft/NM to 3800 - Controlling Obstacle Ukn



CATEGORY	A		B		C		D	
	660-1	463	(500-1)		660-1½	463	(500-1½)	
CIRCLING	680-1	700-1	800-1½	800-2				
	467 (500-1)	487 (500-1)	587 (600-1½)	587 (600-2)				

YUMA, ARIZONA
Amdt 5 22APR21

32°39'N-114°36'W

YUMA MCAS/YUMA INTL (KNYL)

VOR/DME or TACAN RWY 17

SW-4, 17 APR 2025 to 15 MAY 2025

SW-4, 17 APR 2025 to 15 MAY 2025