

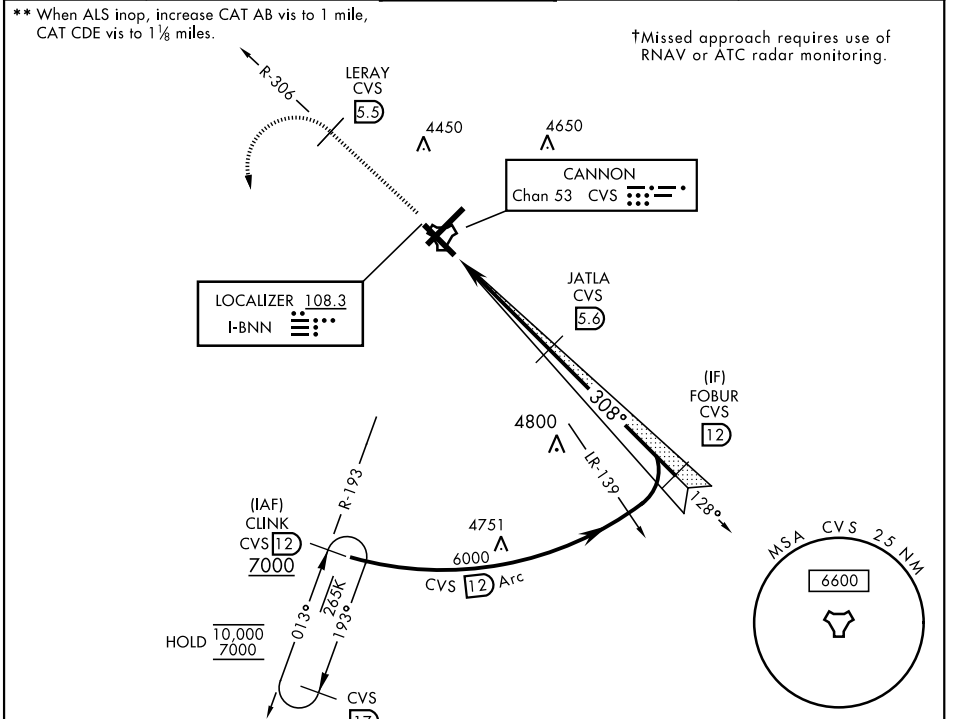
CLOVIS, NEW MEXICO

# ILS or LOC RWY 31

LOC I-BNN <b>108.3</b>	APCH CRS <b>308°</b>	Rwy Idg <b>8196</b> TDZE <b>4270</b> Arprt Elev <b>4295</b>	AL-512 [USAF]	CANNON AFB (KCVS)
---------------------------	-------------------------	---	---------------	-------------------

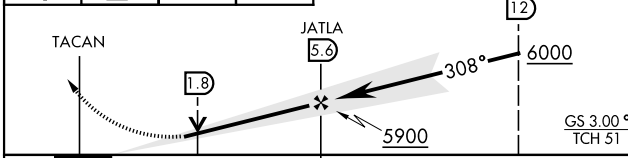
ATC RADAR or DME required.	SSALR (A3)	† MISSED APPROACH: Climb to 6000 out CVS TACAN R-306 to 5.5 DME (LERAY) then turn left climbing to 7000 intercept CVS R-193 to 12 DME (CLINK) and hold.
----------------------------	---------------	---

ATIS <b>119.1 269.9</b>	CANNON APP CON <b>118.425 352.1</b>	CANNON TOWER <b>120.4 270.25</b>	GND CON <b>121.9 275.8</b>	CLNC DEL <b>120.2 293.225</b>
----------------------------	--	-------------------------------------	-------------------------------	----------------------------------

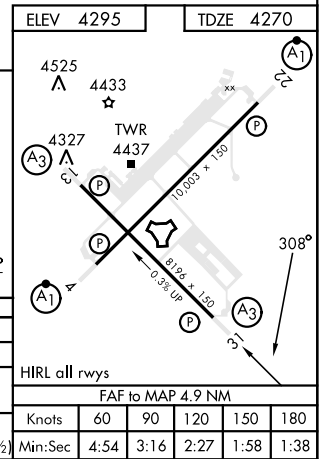


EMERG SAFE ALT 100 NM 9000

6000	LERAY CVS R-306 (5.5)	7000	CLINK CVS R-193 (12)	VGSI TCH (41') and the procedure TCH (51') is greater than 3'.
------	-----------------------	------	----------------------	--



CATEGORY	A	B	C	D	E
S-ILS 31*	4470-1/2		200	(200-1/2)	
S-LOC 31**	4660-1/2 390 (400-1/2)		4660-5/8 390 (400-5/8)		
CIRCLING	4840-1 545 (600-1)		4860-1 1/2 565 (600-1 1/2)	5000-2 1/4 705 (800-2 1/4)	5020-2 1/2 725 (800-2 1/2)



CLOVIS, NEW MEXICO  
Amdt 4 16AUG18

34°23'N-103°19'W

CANNON AFB (KCVS)

# ILS or LOC RWY 31

SW-1, 17 APR 2025 to 15 MAY 2025

SW-1, 17 APR 2025 to 15 MAY 2025