

TACAN RWY 22

TACAN CVS Chan 53	APCH CRS 212°	Rwy Idg 10,003 TDZE 4295 Arprt Elev 4295
--------------------------	----------------------	---

AL-512 [USAF]

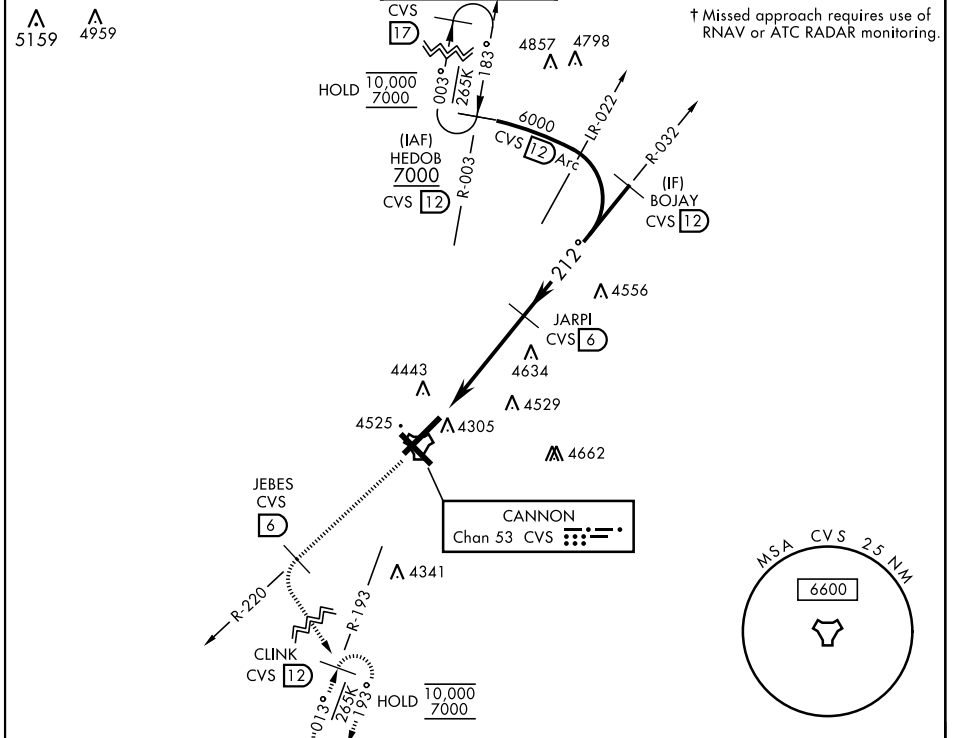
CANNON AFB (KCVS)

▼ *When ALS inop, increase CAT AB RVR to 55 and vis to 1 mile, increase CAT CDE vis to 1¼ miles.

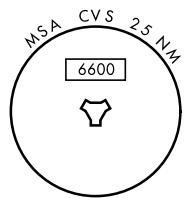
ALSF-1

† MISSED APPROACH: Climb to 6000 out CVS TACAN R-220 to 6 DME (JEBES) then climbing left turn to 7000 intercept CVS R-193 to 12 DME (CLINK) and hold.

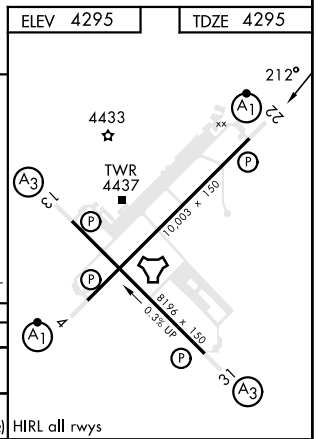
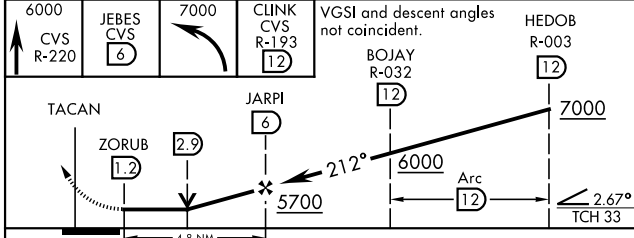
ATIS 119.1 269.9	CANNON APP CON 118.425 352.1	CANNON TOWER 120.4 270.25	GND CON 121.9 275.8	CLNC DEL 120.2 293.225
-------------------------	-------------------------------------	----------------------------------	----------------------------	-------------------------------



† Missed approach requires use of RNAV or ATC RADAR monitoring.



EMERG SAFE ALT 100 NM 9000



ELEV 4295	TDZE 4295				
CATEGORY	A	B	C	D	E
S-22 *	4900/24	605 (700-½)	4900-1¾	605 (700-1¾)	
CIRCLING	4900-1	605 (700-1)	4900-1¾ 605 (700-1¾)	5000-2¼ 705 (800-2¼)	5020-2½ 725 (800-2½)

HIRL all rwys

TACAN RWY 22

SW-1, 17 APR 2025 to 15 MAY 2025

SW-1, 17 APR 2025 to 15 MAY 2025