

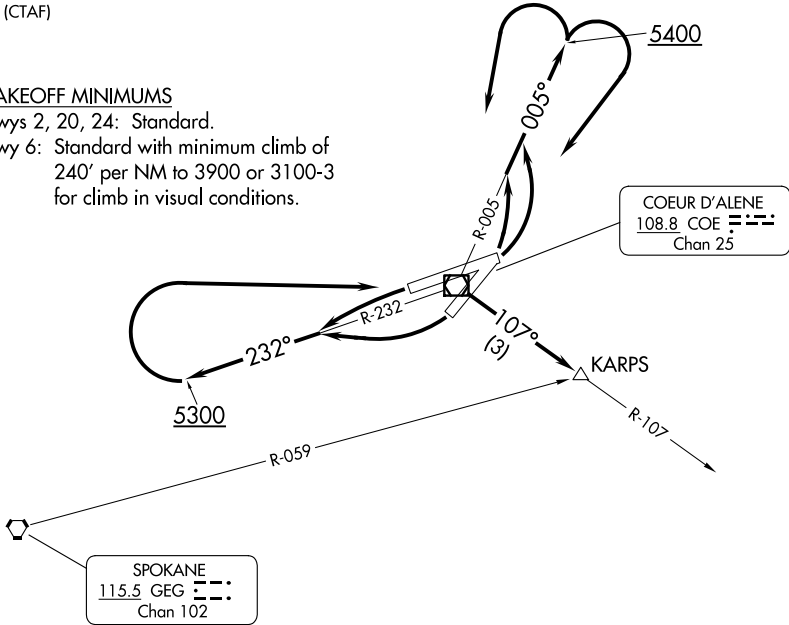
COEUR D'ALENE TWO DEPARTURE (OBSTACLE) AL-527 (FAA) COEUR D'ALENE, IDAHO

SPOKANE DEP CON  
132.1 263.0  
AWOS-3PT  
135.075  
UNICOM  
122.8 (CTAF)

TAKEOFF MINIMUMS

Rwys 2, 20, 24: Standard.

Rwy 6: Standard with minimum climb of 240' per NM to 3900 or 3100-3 for climb in visual conditions.



COEUR D'ALENE  
108.8 COE ---  
Chan 25

SPOKANE  
115.5 GEG ---  
Chan 102

TAKEOFF OBSTACLE NOTES

Rwy 20: Trees beginning 165' from DER, 276' right of centerline, up to 109' AGL/2399' MSL. Tree 2914' from DER, 425' left of centerline, 38' AGL/2383' MSL.

Rwy 6: Poles beginning 895' from DER, 690' right of centerline, up to 44' AGL/2354' MSL. Trees beginning 1149' from DER, 720' right of centerline, up to 103' AGL/2563' MSL.

NOTE: Chart not to scale.

DEPARTURE ROUTE DESCRIPTION

TAKEOFF RUNWAY 2: Climbing left turn to 5400 on COE R-005, then left or right turn direct COE VOR/DME, then on COE R-107 to KARPS INT to MEA for route of flight.

TAKEOFF RUNWAY 6: Climbing left turn to 5400 on COE R-005, then left or right turn direct COE VOR/DME, then on COE R-107 to KARPS INT to MEA for route of flight or climb in visual conditions to cross Coeur d'Alene/Pappy Boyington Field Airport at or above 5300 before proceeding on course. When executing VCOA, notify ATC prior to departure.

TAKEOFF RUNWAY 20: Climbing right turn, thence . . . .

TAKEOFF RUNWAY 24: Climbing left turn, thence . . . .

. . . . climb on COE R-232 to 5300, then right direct COE VOR/DME, then on COE R-107 to KARPS INT to MEA for route of flight.