

LOC I-COE <b>110.7</b>	APP CRS <b>051°</b>	Rwy Idg TDZE Apt Elev	<b>7400</b> <b>2291</b> <b>2320</b>
---------------------------	------------------------	-----------------------------	---

# ILS or LOC RWY 6

COEUR D'ALENE/PAPPY BOYINGTON FLD (COE)

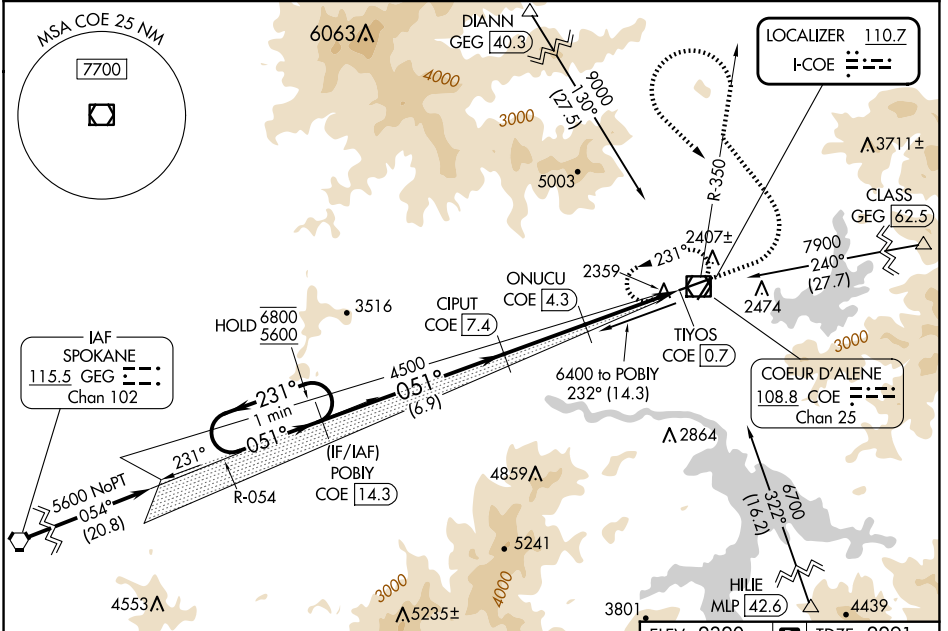
DME required.

**⚠** Circling Rwy 2 NA at night. Autopilot coupled approach NA below 2840. Simultaneous reception of I-COE localizer and COE DME required. Circling NA for Cat D southeast of Rwy 6-24.

MALSR

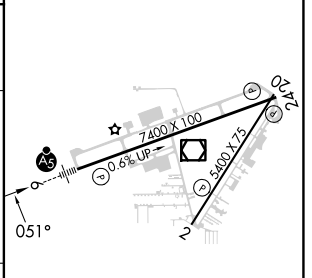
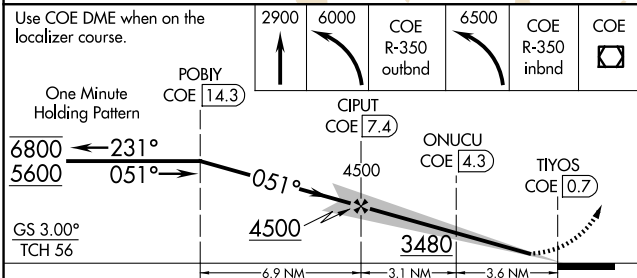
MISSED APPROACH: Climb to 2900 then climbing left turn to 6000 on COE R-350 outbound then climbing left turn to 6500 on COE R-350 inbound to COE VOR/DME and hold.

AWOS-3PT <b>135.075</b>	SPOKANE APP CON <b>132.1 263.0</b>	UNICOM <b>122.8 (CTAF)</b>
----------------------------	---------------------------------------	-------------------------------



Procedure NA for arrival on GEG VORTAC airway radials 006 CW 073.

ELEV 2320 TDZE 2291



CATEGORY	A	B	C	D
S-ILS 6	2491-1/2 200 (200-1/2)			
S-LOC 6	2860-1/2 569 (600-1/2)		2860-1 569 (600-1)	2860-1 1/4 569 (600-1 1/4)
CIRCLING	2860-1 540 (600-1)	2880-1 560 (600-1)	3020-2 700 (700-2)	3180-2 3/4 860 (900-2 3/4)

MIRL Rwy 2-20

HIRL Rwy 6-24

REIL Rws 2 and 24

NW-1, 17 APR 2025 to 15 MAY 2025

NW-1, 17 APR 2025 to 15 MAY 2025