

LOC/DME I-DLS <b>109.35</b> Chan 30(Y)	APP CRS <b>238°</b>	Rwy Idg TDZE <b>4451</b> <b>243</b>	Apt Elev <b>247</b>
--	------------------------	---	------------------------

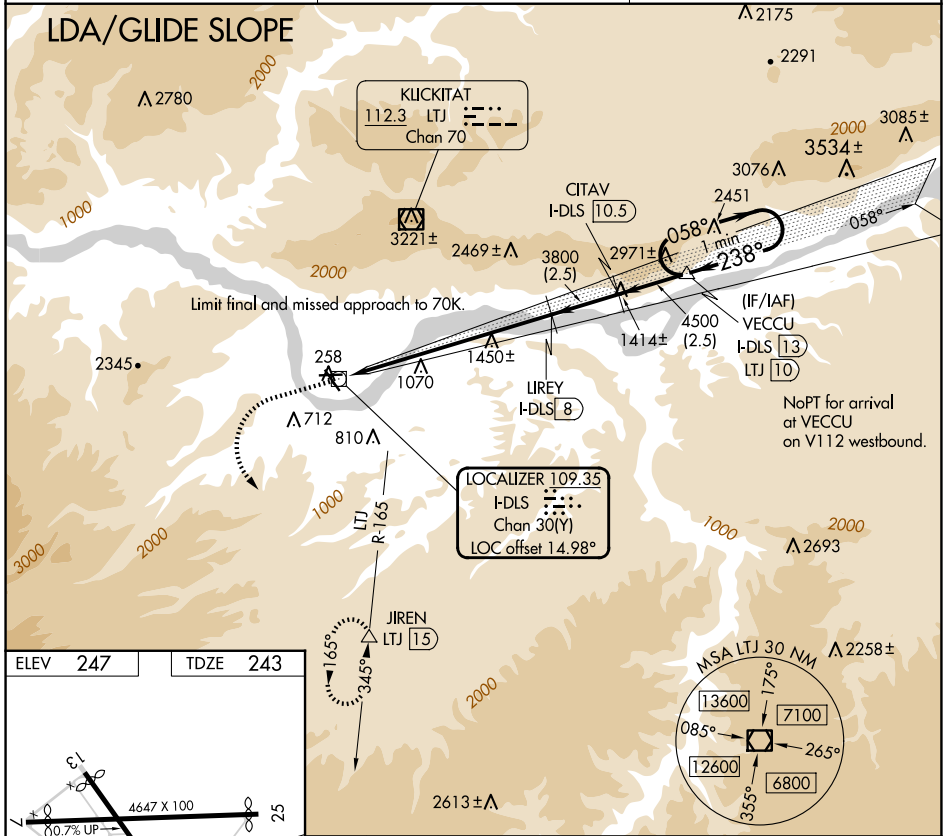
# COPTER LDA/DME RWY 25

COLUMBIA GORGE RGNL/THE DALLES MUNI(DLS)

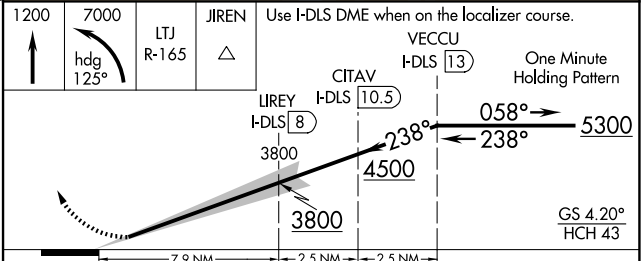
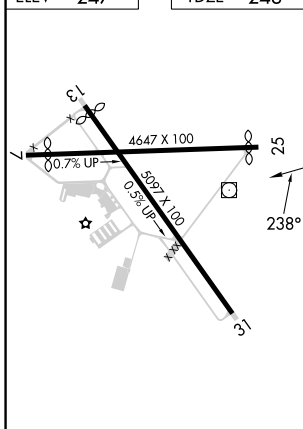
**NA** When local altimeter setting not received, procedure NA. Glide slope provided by standard glide slope equipment.

MISSED APPROACH: Climb to 1200 then climbing left turn to 7000 on heading 125° and LTJ VOR/DME R-165 to JIREN/LTJ 1.5 DME and hold, continue climb-in-hold to 7000.

ASOS <b>135.175</b>	SEATTLE CENTER <b>119.65 257.6</b>	UNICOM <b>123.0 (CTAF) 0</b>
------------------------	---------------------------------------	---------------------------------



ELEV 247	TDZE 243
----------	----------



REIL Rwy 31 0	MIRL Rwy 7-25 and 13-31 0
CATEGORY	COPTER
H-25	783-1½ 540 (600-1½)

NW-1, 17 APR 2025 to 15 MAY 2025

NW-1, 17 APR 2025 to 15 MAY 2025