

HI-ILS or LOC/DME RWY 32

LOC I-BKF 109.7	APCH CRS 323°	Rwy ldg 11,006 TDZE 5663 Arprt Elev 5663
---------------------------	-------------------------	---

AL-538 [USAF]

BUCKLEY SFB (KBKF)

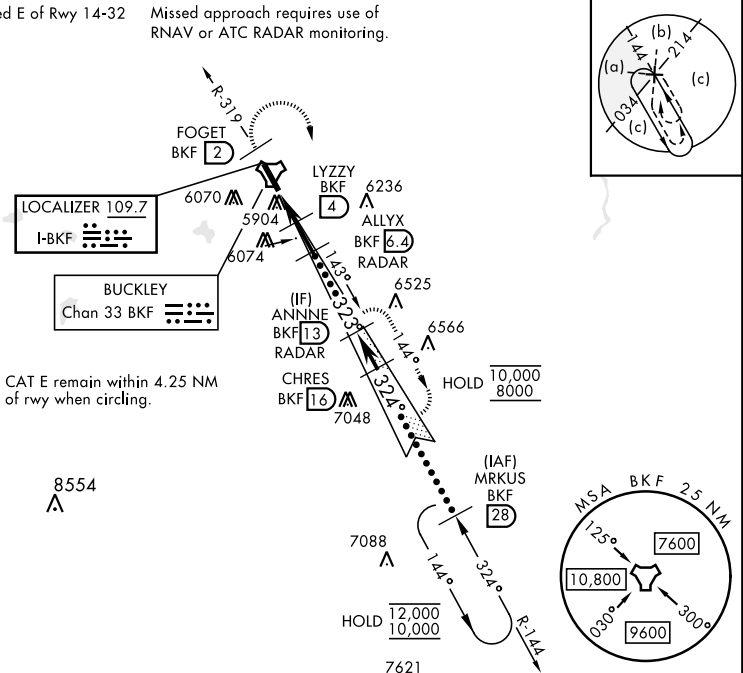
* When ALS inop, increase CAT CDE RVR to 40 and vis to 3/4 miles.
 ** When ALS inop, increase CAT CDE vis to 1 1/4 miles.

 ALSF-1

 MISSED APPROACH: Climb on BKF TACAN R-319 to FOGET, then climbing right turn to 8200 and intercept BKF R-144 to ANNNE and hold or as directed by ATC.

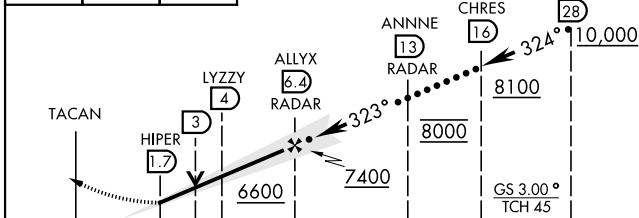
ATIS ★ 119.675 259.3	DENVER APP CON 128.45 251.075	TOWER ★ 121.0 291.675	GND CON 121.6 275.8	CLNC DEL 121.6 275.8
--------------------------------	---	---------------------------------	-------------------------------	--------------------------------

*** Circling not authorized E of Rwy 14-32 Missed approach requires use of RNAV or ATC RADAR monitoring.

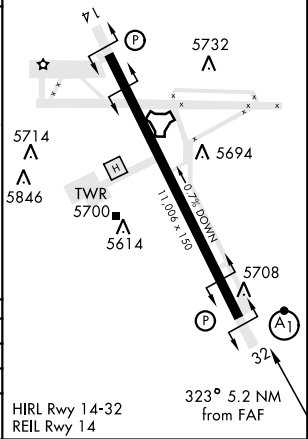


CAT E remain within 4.25 NM of rwy when circling.

EMERG SAFE ALT 100 NM 16,500



ELEV 5663	TDZE 5663
-----------	-----------



CATEGORY	C	D	E
S-ILS 32*	5863/24	200	(200-1/2)
S-LOC 32**	6280-13/8	617	(700-13/8)
CIRCLING ***	6360-2 697 (700-2)	6400-2 1/4 737 (800-2 1/4)	6420-2 3/4 757 (800-2 3/4)

HI-ILS or LOC/DME RWY 32

SW-1, 17 APR 2025 to 15 MAY 2025

SW-1, 17 APR 2025 to 15 MAY 2025