

# SBONO ONE ARRIVAL

AL-545 (FAA)

PALM SPRINGS, CALIFORNIA

SOCAL APP CON  
126.7 370.95  
PSP ATIS  
124.65  
TRM ASOS  
118.325  
BERMUDA DUNES UNICOM  
122.8  
JACQUELINE COCHRAN UNICOM  
123.0  
PALM SPRINGS TOWER\*  
119.7 377.05

GOFFS  
114.4 GFS :...:  
Chan 91

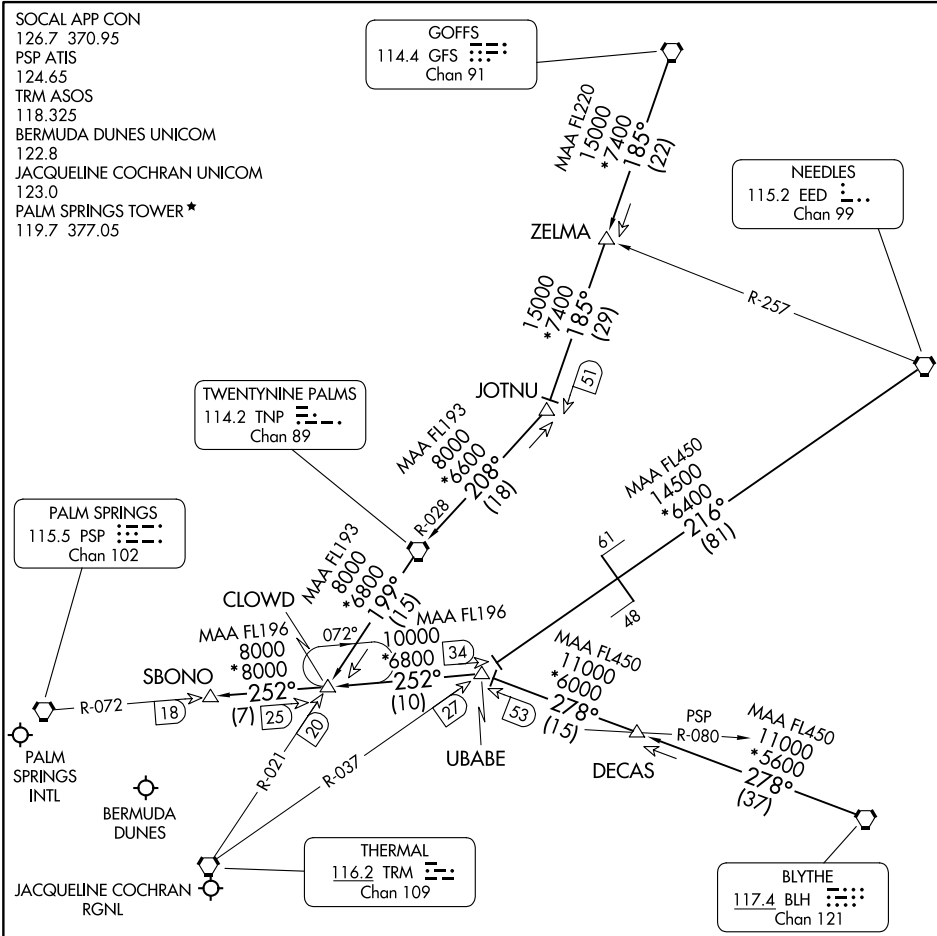
NEEDLES  
115.2 EED :...:  
Chan 99

TWENTYNINE PALMS  
114.2 TNP :...:  
Chan 89

PALM SPRINGS  
115.5 PSP :...:  
Chan 102

THERMAL  
116.2 TRM :...:  
Chan 109

BLYTHE  
117.4 BLH :...:  
Chan 121



SW-3, 17 APR 2025 to 15 MAY 2025

SW-3, 17 APR 2025 to 15 MAY 2025

NOTE: Chart not to scale.

NOTE: DME required.

## ARRIVAL ROUTE DESCRIPTION

- BLYTHE TRANSITION (BLH.SBONO1): From over BLH VORTAC on BLH R-278 and PSP R-072 to SBONO DME. Thence. . .
  - DECAS TRANSITION (DECAS.SBONO1): From over DECAS INT on BLH R-278 and PSP R-072 to SBONO DME. Thence. . .
  - GOFFS TRANSITION (GFS.SBONO1): From over GFS VORTAC on GFS R-185 and TNP R-028 to TNP VORTAC, then on TNP R-199 and PSP R-072 to SBONO DME. Thence. . .
  - NEEDLES TRANSITION (EED.SBONO1): From over EED VORTAC on EED R-216 and TRM R-037 to UBABE DME, then on PSP R-072 to SBONO DME. Thence. . .
- . . . .From over SBONO DME expect RADAR vectors to final approach course.

# SBONO ONE ARRIVAL

PALM SPRINGS, CALIFORNIA