

SW-3, 17 APR 2025 to 15 MAY 2025

**DEPARTURE ROUTE DESCRIPTION**

**TAKEOFF RUNWAY 6:** Climb on heading 057° to 2100, then climbing right turn direct LOSOM to cross LOSOM at or above 5500, then on track 155° to cross STRKS between 6100 and 6900 then on track 172° to ELICA, thence. . . .

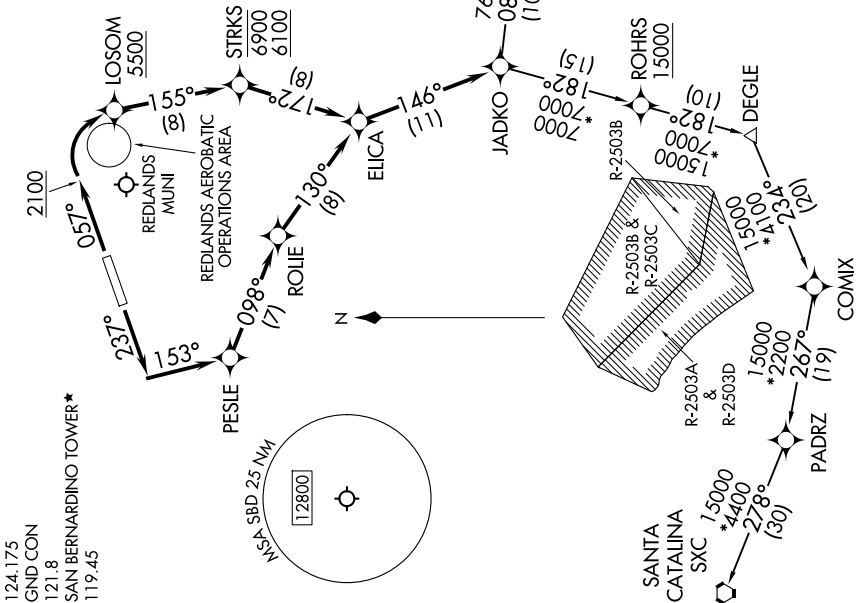
**TAKEOFF RUNWAY 24:** Climb on heading 237° to intercept course 153° to PESLE, then on track 098° to ROLIE, then on track 130° to ELICA, thence. . . . on track 146° to JADKO. Expect filled altitude 10 minutes after departure.

AVRRY TRANSITION (JADKO1.AVRRY)  
MTBAL TRANSITION (JADKO1.MTBAL)  
SANTA CATALINA TRANSITION (JADKO1.SXC)

**TOP ALTITUDE:  
AVRRY and MTBAL TRANSITIONS: 14000;  
SANTA CATALINA TRANSITION: 15000.**

RNAV 1 - GPS.
RADAR required.

SOCAL DEP CON  
127.0 318.2  
ATIS  
124.175  
GND CON  
121.8  
SAN BERNARDINO TOWER\*  
119.45



**TAKEOFF MINIMUMS**  
Rwy 6: Standard with minimum climb of 602' per NM to 5800.  
Rwy 24: Standard with minimum climb of 439' per NM to 4100.

**NOTE:** Turbojet and turboprop aircraft only.  
**NOTE:** Rwy 6 departures maintain at or below 210K until leaving 3500.  
**NOTE:** Scheduled aerobatic activity beginning 4.5 NM east of Rwy 6 DER/ 2.7 NM west of LOSOM 3500 feet to 7500 feet MSL. 123.05.

NOTE: Chart not to scale.

SW-3, 17 APR 2025 to 15 MAY 2025