

HARYS FIVE DEPARTURE (RNAV)

AL-552 (FAA)

VAN NUYS (VNY)
VAN NUYS, CALIFORNIA

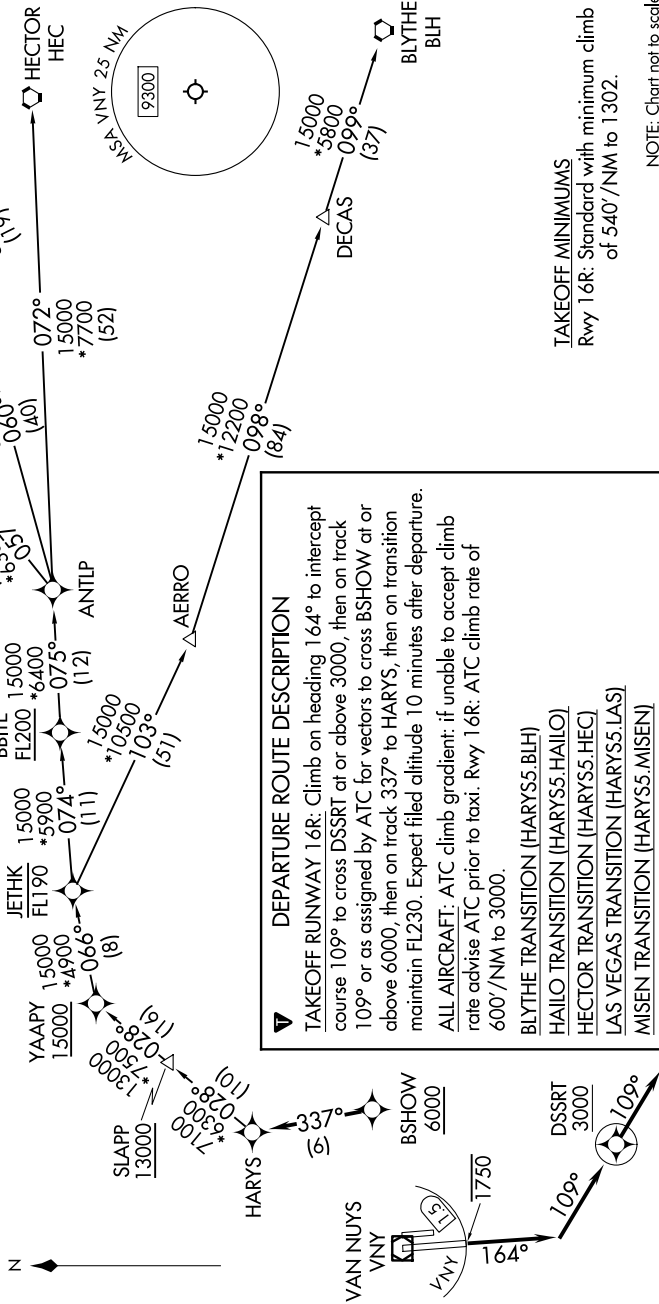
SW-3, 17 APR 2025 to 15 MAY 2025

SOCAL DEP CON
124.6 298.85
ATIS
127.55
CLNC DEL
126.6 239.0
GND CON
121.7
VAN NUYS TOWER*
119.3 239.0

RNAV 1 - DME/DME/IRU or GPS.
RADAR required.

TOP ALTITUDE:
FL230

NOTE: Turbojet and high performance turboprop aircraft only.
NOTE: MISEN transition restricted to aircraft landing LAS terminal area.
NOTE: Do not file HAILO transition - to be assigned by ATC.
NOTE: Cross DER/VNY VOR/DME 1.5 DME south of or below 1750.



DEPARTURE ROUTE DESCRIPTION

TAKEOFF RUNWAY 16R: Climb on heading 164° to intercept course 109° to cross DSSRT at or above 3000, then on track 109° or as assigned by ATC for vectors to cross BSHOW at or above 6000, then on track 337° to HARYS, then on transition maintain FL230. Expect filed altitude 10 minutes after departure.

ALL AIRCRAFT: ATC climb gradient: if unable to accept climb rate advise ATC prior to taxi. Rwy 16R: ATC climb rate of 600'/NM to 3000.

- BLYTHE TRANSITION (HARYS5.BLH)
- HAILO TRANSITION (HARYS5.HAILO)
- HECTOR TRANSITION (HARYS5.HEC)
- LAS VEGAS TRANSITION (HARYS5.LAS)
- MISEN TRANSITION (HARYS5.MISEN)

TAKEOFF MINIMUMS
Rwy 16R: Standard with minimum climb of 540'/NM to 1302.

NOTE: Chart not to scale.

HARYS FIVE DEPARTURE (RNAV) (HARYS5.HARYS) 20FEB25

VAN NUYS, CALIFORNIA
VAN NUYS (VNY)

SW-3, 17 APR 2025 to 15 MAY 2025