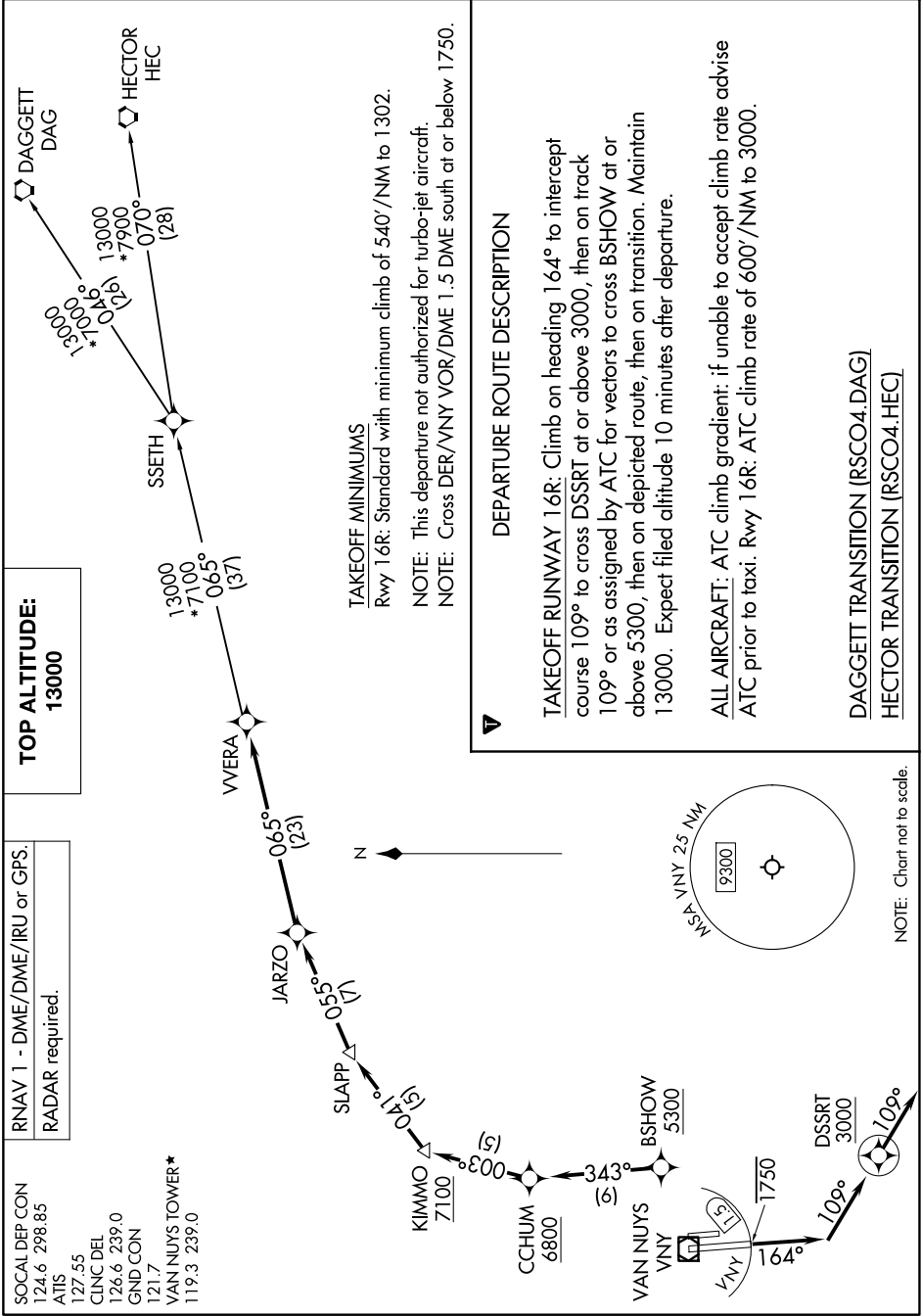


ROSCOE FOUR DEPARTURE (RNAV)

AL-552 (FAA)

VAN NUYS (VNY)
VAN NUYS, CALIFORNIA

SW-3, 17 APR 2025 to 15 MAY 2025



RNAV 1 - DME/DME/IRU or GPS.
RADAR required.

SOCAL DEP CON 124.6 298.85
ATIS 127.55
CLINC DEL 126.6 239.0
GND CON 121.7
VAN NUYS TOWER* 119.3 239.0

TOP ALTITUDE:
13000

TAKEOFF MINIMUMS
Rwy 16R: Standard with minimum climb of 540'/NM to 1302.

NOTE: This departure not authorized for turbo-jet aircraft.
NOTE: Cross DER/VNY VOR/DME 1.5 DME south at or below 1750.

DEPARTURE ROUTE DESCRIPTION

TAKEOFF RUNWAY 16R: Climb on heading 164° to intercept course 109° to cross DSSRT at or above 3000, then on track 109° or as assigned by ATC for vectors to cross BSHOW at or above 5300, then on depicted route, then on transition. Maintain 13000. Expect filed altitude 10 minutes after departure.

ALL AIRCRAFT: ATC climb gradient: if unable to accept climb rate advise ATC prior to taxi. Rwy 16R: ATC climb rate of 600'/NM to 3000.

DAGGETT TRANSITION (RSCO4.DAG)
HECTOR TRANSITION (RSCO4.HEC)

NOTE: Chart not to scale.

ROSCOE FOUR DEPARTURE (RNAV)

(RSCO4.VERA) 20FEB25

VAN NUYS, CALIFORNIA
VAN NUYS (VNY)

SW-3, 17 APR 2025 to 15 MAY 2025