

LOC/DME I-VIS 108.5 Chan 22	APP CRS 301°	Rwy ldg TDZE Apt Elev	5635 295 295
--	------------------------	-----------------------------	---

ILS or LOC RWY 30

VISALIA MUNI (VIS)

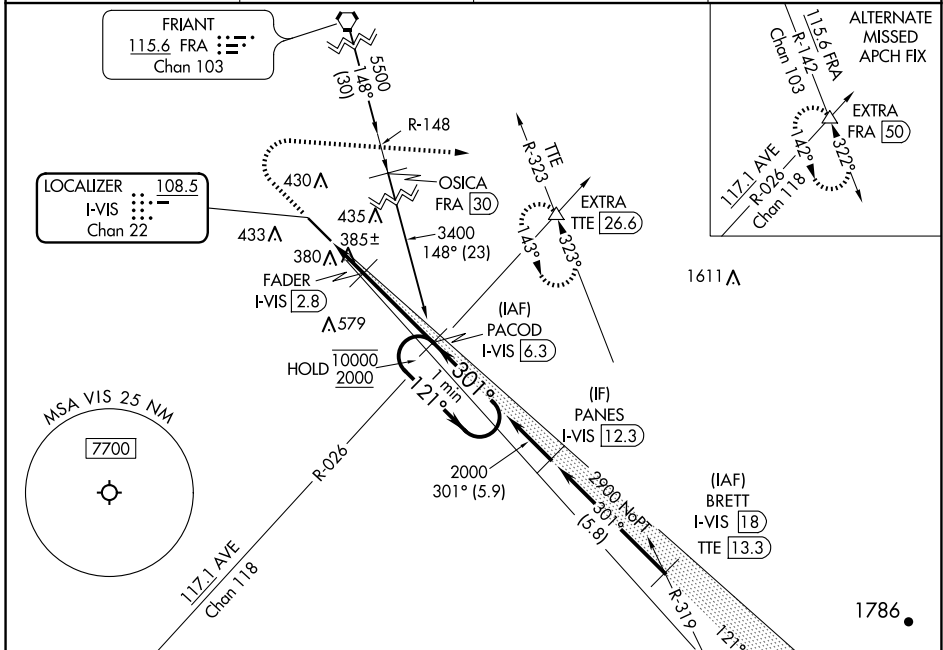
DME required.

▼ For inop ALS, increase S-LOC 30
▲ NA Cat C/D visibility to 1 SM.

MALSR

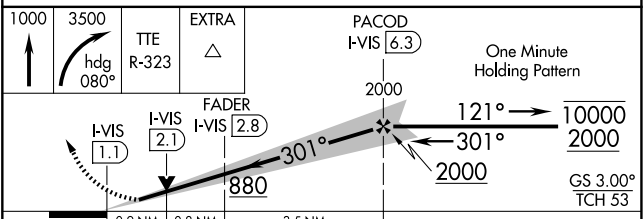
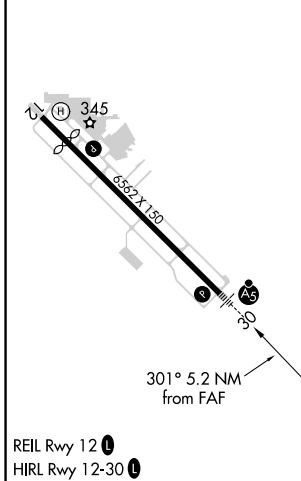
MISSED APPROACH: Climb to 1000 then climbing right turn to 3500 on heading 080° and on TTE VOR/DME R-323 to EXTRA INT/TTE 26.6 DME and hold, continue climb-in-hold to 3500.

AWOS-3PT 119.925	FRESNO APP CON 118.5	CLNC DEL 118.5	UNICOM 123.05 (CTAF) 0
----------------------------	--------------------------------	--------------------------	---



ELEV 295	D TDZE 295
----------	-------------------

Procedure NA for arrivals at TTE VOR/DME on V165-459 southeast bound.



CATEGORY	A	B	C	D
S-ILS 30	502-½ 207 (300-½)			
S-LOC 30	640-½ 345 (400-½)	640-⅝ 345 (400-⅝)		
C CIRCLING	720-1 425 (500-1)	760-1 465 (500-1)	760-1½ 465 (500-1½)	940-2 645 (700-2)