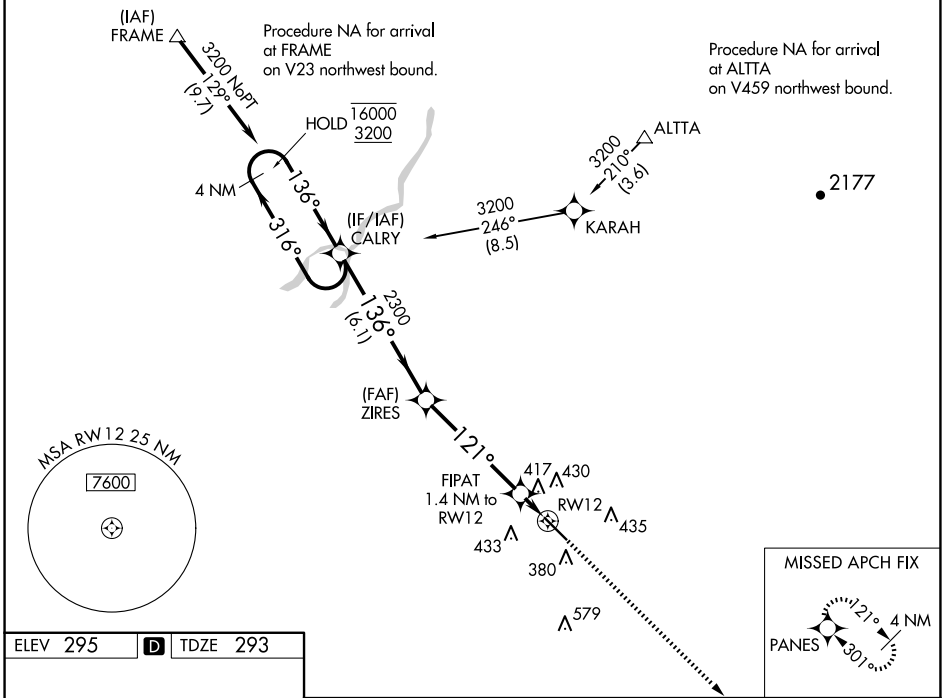


WAAS CH 82423 W12A	APP CRS 121°	Rwy Idg TDZE Apt Elev	5635 293 295
--	------------------------	-----------------------------	---

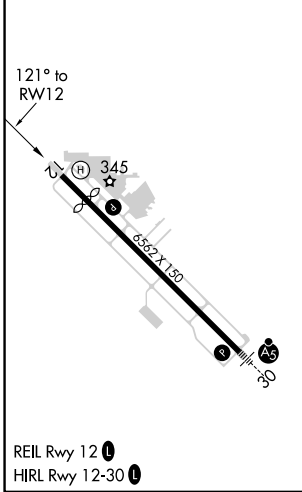
RNAV (GPS) RWY 12

VISALIA MUNI (VIS)

RNP APCH.		MISSED APPROACH: Climb to 2900 direct PANES and hold.	
<p>▼ For uncompensated Baro-VNAV systems, LNAV/VNAV NA below -15°C or above 54°C.</p>			
AWOS-3PT 119.925	FRESNO APP CON 118.5	CLNC DEL 118.5	UNICOM 123.05 (CTAF) 0



ELEV 295	D	TDZE 293
----------	----------	----------



4 NM Holding Pattern CALRY				VGSI and RNAV glidepath not coincident (VGSI Angle 3.00/TCH 40).		2900	PANES
16000	← 316°	→ 136°	2300	ZIRES	FIPAT 1.4 NM to RWY 12	*LNAV only.	
3200			2300		RWY 12		
GP 3.00°				TCH 50		*780	
				6.1 NM		4.8 NM	
						1.4 NM	
CATEGORY	A		B		C		D
LPV DA			543-3/4		250 (300-3/4)		
LNAV/VNAV DA			697-1 1/8		404 (500-1 1/8)		
LNAV MDA	680-1		387 (400-1)		680-1 1/8		387 (400-1 1/8)
CIRCLING	720-1		760-1		760-1 1/2		940-2
	425 (500-1)		465 (500-1)		465 (500-1 1/2)		645 (700-2)

SW-2, 17 APR 2025 to 15 MAY 2025

SW-2, 17 APR 2025 to 15 MAY 2025