

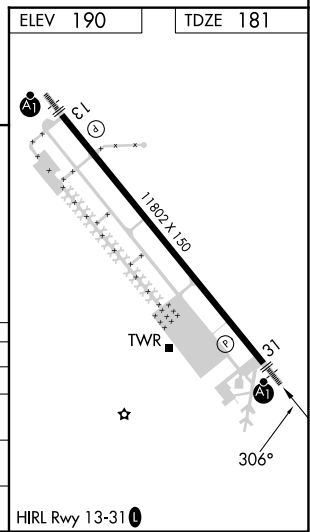
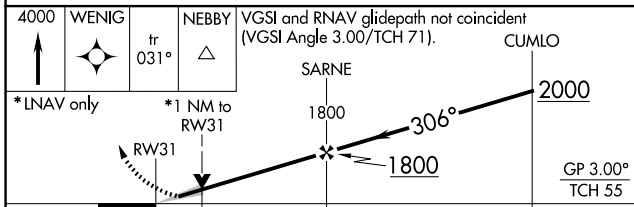
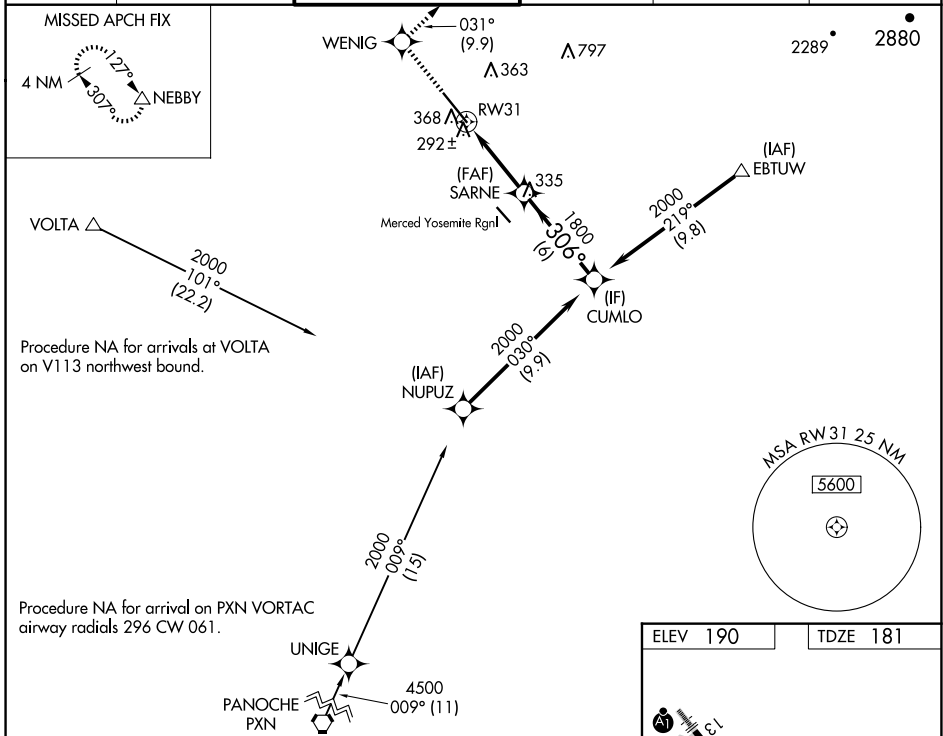
WAAS CH 87110 W31A	APP CRS 306°	Rwy Idg 11802 TDZE 181 Apt Elev 190
--	------------------------	--

RNAV (GPS) RWY 31

CASTLE (MER)

RNP APCH.	ALSF-1 	MISSED APPROACH: Climb to 4000 direct WENIG and on track 031° to NEBBY and hold, continue climb-in-hold to 4000.
-----------	------------	--

ATIS 124.475	NORCAL APP CON 120.95 269.45	CASTLE TOWER ★ 118.175 (CTAF) 235.775	GND CON 133.575	UNICOM 122.95	123.0
------------------------	--	---	---------------------------	-------------------------	--------------



CATEGORY	A	B	C	D
LPV DA		381-1/2	200 (200-1/2)	
LNNAV/VNAV DA		498-1/2	317 (400-1/2)	
LNNAV MDA	560-1/2	379 (400-1/2)	560-5/8	379 (400-5/8)
CIRCLING	660-1	470 (500-1)	720-1 1/2 530 (600-1 1/2)	800-2 610 (700-2)

SW-2, 17 APR 2025 to 15 MAY 2025

SW-2, 17 APR 2025 to 15 MAY 2025