

PRICY FOUR ARRIVAL (RNAV) Transition Routes

ORLANDO, FLORIDA

SE-3, 17 APR 2025 to 15 MAY 2025

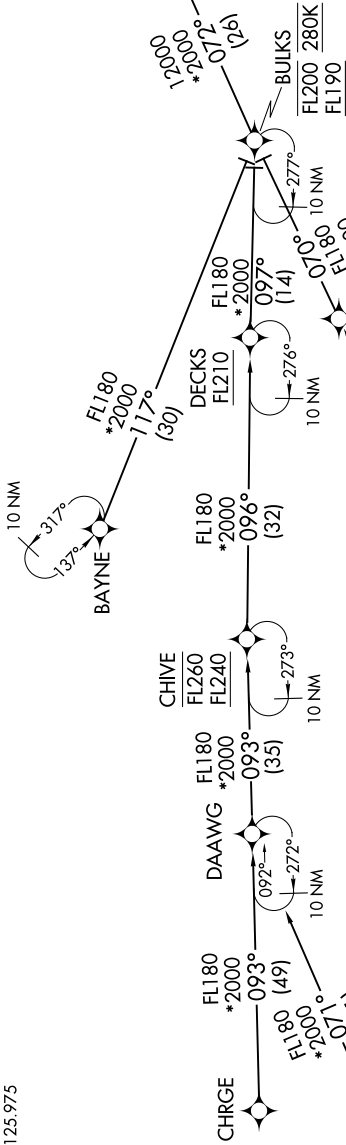
- ORLANDO APP CON
- 134.05 339.8
- ISM ATIS
- 128.775
- LEE ATIS
- 134.325
- MCO D-ATIS ARR
- 121.25
- MLB ATIS
- 132.55
- ORL ATIS
- 127.25
- SFB ATIS
- 125.975

- NOTE: Jet aircraft only.
- NOTE: Do not file BULKS, CHIVE or DOZES Transitions - to be assigned by ATC.
- NOTE: Landing south use Rwy 18R Transition, Landing north use Rwy 36L Transition.

- RNAV 1 - DME/DME/IRU or GPS.
- CHRG Transition - RNAV 1-GPS.
- CIGAR Transition - RNAV 1-GPS.
- RADAR required.

See following page for arrival routes.

| | | |
|-------|-------|------|
| PRICY | 16000 | 250K |
| | 13000 | |



- BAYNE TRANSITION (BAYNE.PRICY4)
- BULKS TRANSITION (BULKS.PRICY4)
- CHIVE TRANSITION (CHIVE.PRICY4)
- CHRG TRANSITION (CHRG.PRICY4)
- CIGAR TRANSITION (CIGAR.PRICY4)
- DOZES TRANSITION (DOZES.PRICY4)

(CONTINUED ON FOLLOWING PAGE)

NOTE: Chart not to scale.

SE-3, 17 APR 2025 to 15 MAY 2025

PRICY FOUR ARRIVAL (RNAV) Transition Routes

ORLANDO, FLORIDA