

GLASR THREE ARRIVAL

AL-582 (FAA)

SEATTLE, WASHINGTON

NW-1, 17 APR 2025 to 15 MAY 2025

DME and RADAR required.

SEATTLE APP CON
123.9 338.2
BFI ATIS
127.75

KTCM D-ATIS
135.825 270.1
RNT ATIS
126.95
SEA D-ATIS
118.0

JAKSN

PROP/TURBOPROP: 10000 250K
Maintain 10000.

JET AIRCRAFT: Landing North: 16000 270K
Landing South: 12000 250K
Maintain 12000.
Landing BFI or RNT: 11000 250K
Maintain 11000.

PAINE
110.6 PAE
Chan 43

R-075

WOODI
JET AIRCRAFT:
Landing North:
14000

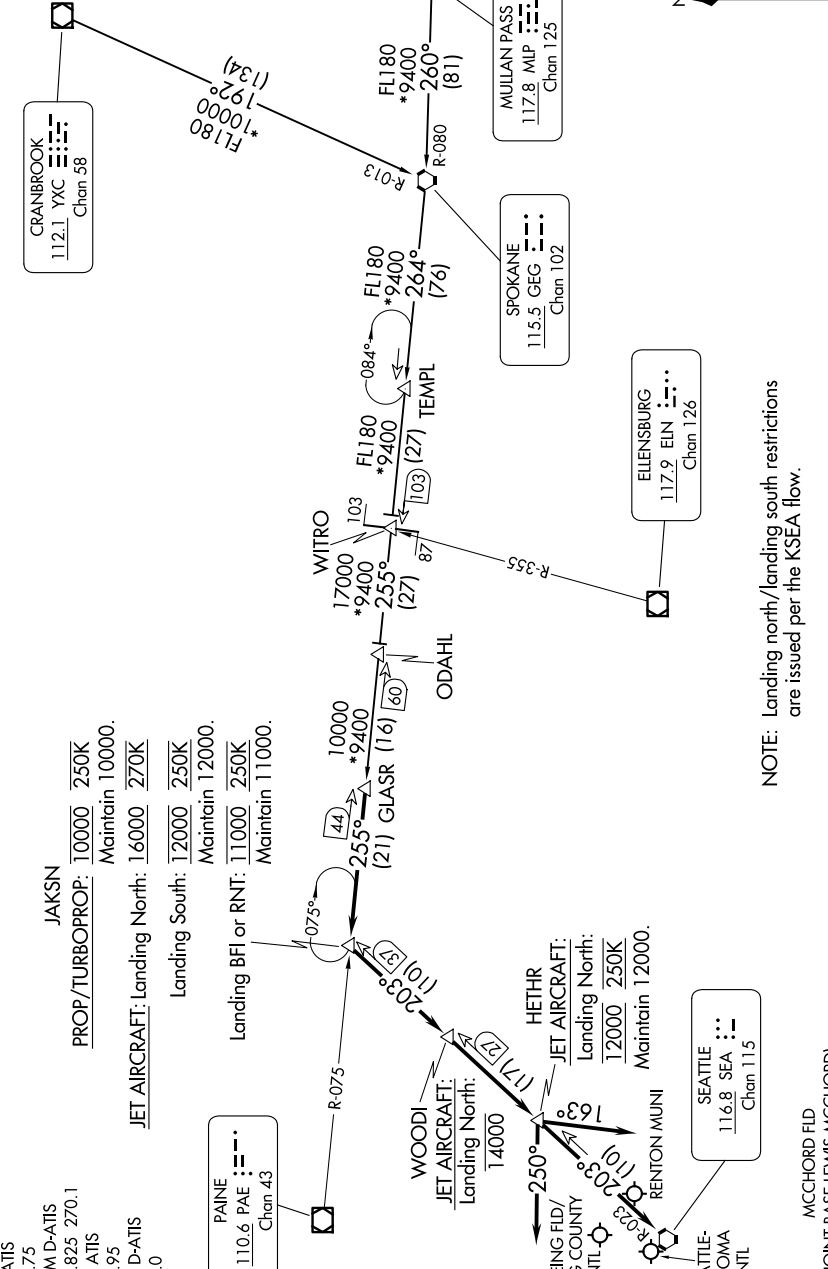
BOEING FLD/
KING COUNTY
INTL

HETHR
JET AIRCRAFT:
Landing North:
12000 250K
Maintain 12000.

SEATTLE-
TACOMA
INTL

SEATTLE
116.8 SEA
Chan 115

MCCORD FLD
LEWIS-MCCORD



NOTE: Chart not to scale.

NOTE: Landing north/landing south restrictions are issued per the KSEA flow.

(CONTINUED ON FOLLOWING PAGE)

NW-1, 17 APR 2025 to 15 MAY 2025

GLASR THREE ARRIVAL

SEATTLE, WASHINGTON