

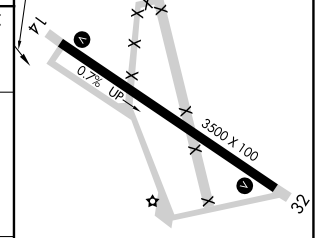
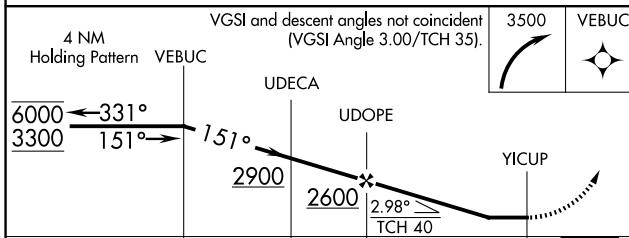
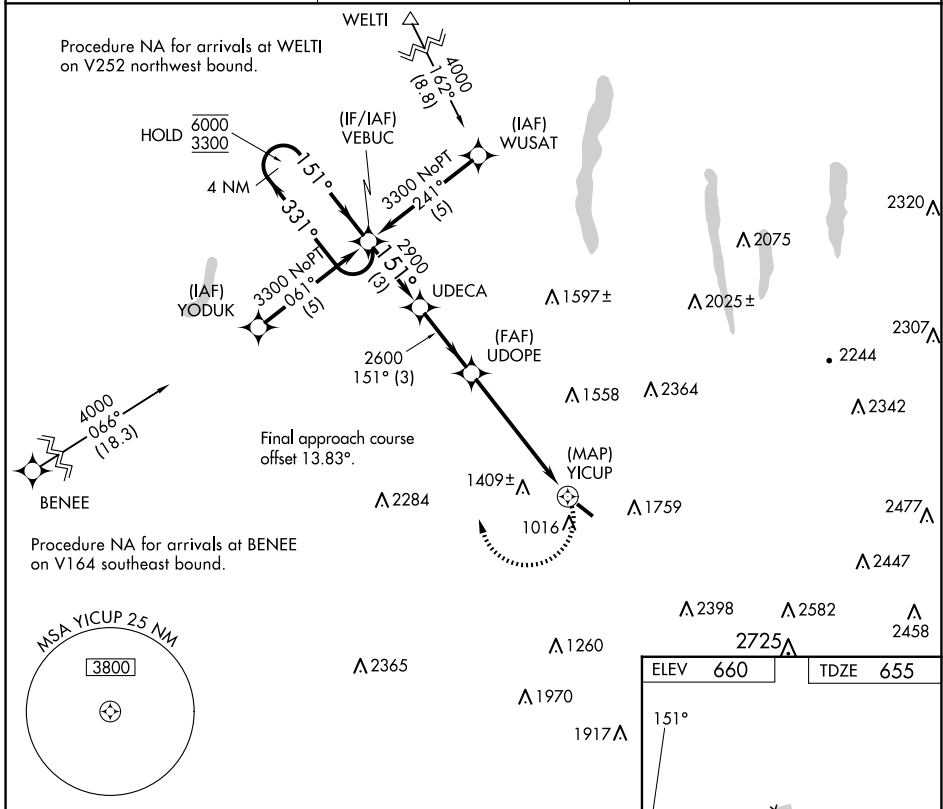
APP CRS	Rwy ldg	3500
151°	TDZE	655
	Apt Elev	660

RNAV (GPS) RWY 14

DANSVILLE MUNI (DSV)

RNP APCH.	MISSED APPROACH: Climbing right turn to 3500 direct VEBUC and hold.
<p>▼ Procedure NA at night. Rwy 14 helicopter visibility reduction below 1 SM NA.</p> <p>▲</p>	

ASOS 118.325	ROCHESTER APP CON 123.7 322.3	UNICOM 123.0 (CTAF) 0
------------------------	---	---------------------------------



CATEGORY	A	B	C	D
LNVA MDA	1840-1¼ 1185 (1200-1¼)	1840-1½ 1185 (1200-1½)	1840-3 1185 (1200-3)	NA
CIRCLING	1940-1¼ 1280 (1300-1¼)	2120-1½ 1460 (1500-1½)	2220-3 1560 (1600-3)	NA

ELEV	660	TDZE	655
------	-----	------	-----

MIRL Rwy 14-32 0

NE-2, 17 APR 2025 to 15 MAY 2025

NE-2, 17 APR 2025 to 15 MAY 2025