

APP CRS	Rwy Idg	N/A
<b>343°</b>	TDZE	N/A
	Apt Elev	<b>660</b>

# RNAV (GPS)-A

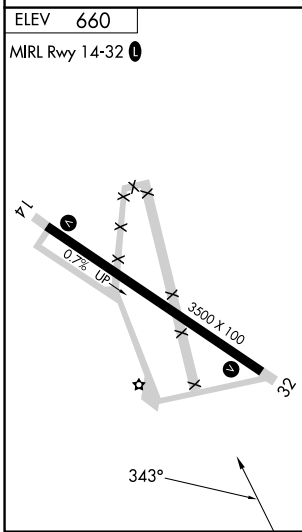
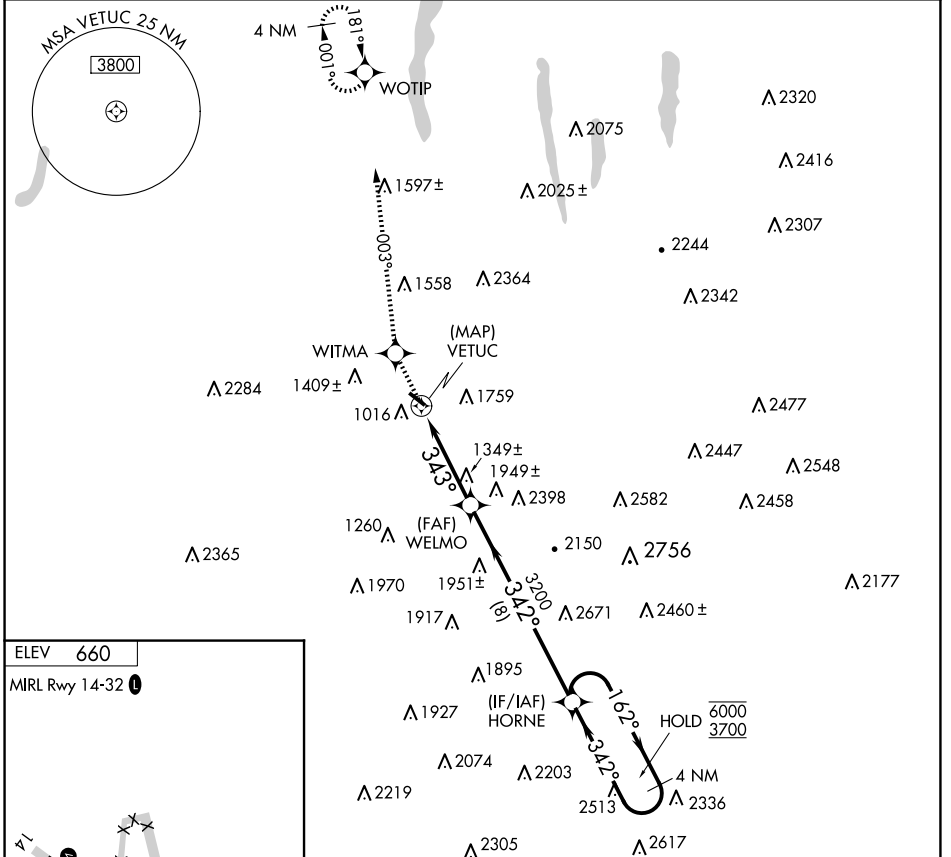
DANVILLE MUNI (DSV)

RNP APCH - GPS.

▼ Procedure NA at night. Rwy 14, 32 helicopter visibility reduction below 1 SM NA. When local  
 ▲ altimeter setting not received, use ROC altimeter setting and increase all MDAs 100 feet.

MISSED APPROACH: Climb to 3300 direct WITMA and on 003° track to WOTIP and hold.

ASOS <b>118.325</b>	ROCHESTER APP CON <b>123.7 322.3</b>	UNICOM <b>123.0 (CTAF)</b>
------------------------	---	-------------------------------



3300	WITMA	tr 003°	WOTIP	HORNE	4 NM Holding Pattern
				162° → 6000	← 342° 3700
	VETUC	WELMO			
		343°	3200		
		4 NM	8 NM		
CATEGORY	A	B	C	D	
CIRCLING	1960-1¼ 1300 (1300-1¼)	2120-1½ 1460 (1500-1½)	2220-3 1560 (1600-3)	NA	

NE-2, 17 APR 2025 to 15 MAY 2025

NE-2, 17 APR 2025 to 15 MAY 2025