

WAAS CH 82100 W27A	APP CRS 273°	Rwy Idg TDZE Apt Elev	4801 3 3
--	------------------------	-----------------------------	-------------------------------------

RNAV (GPS) RWY 27

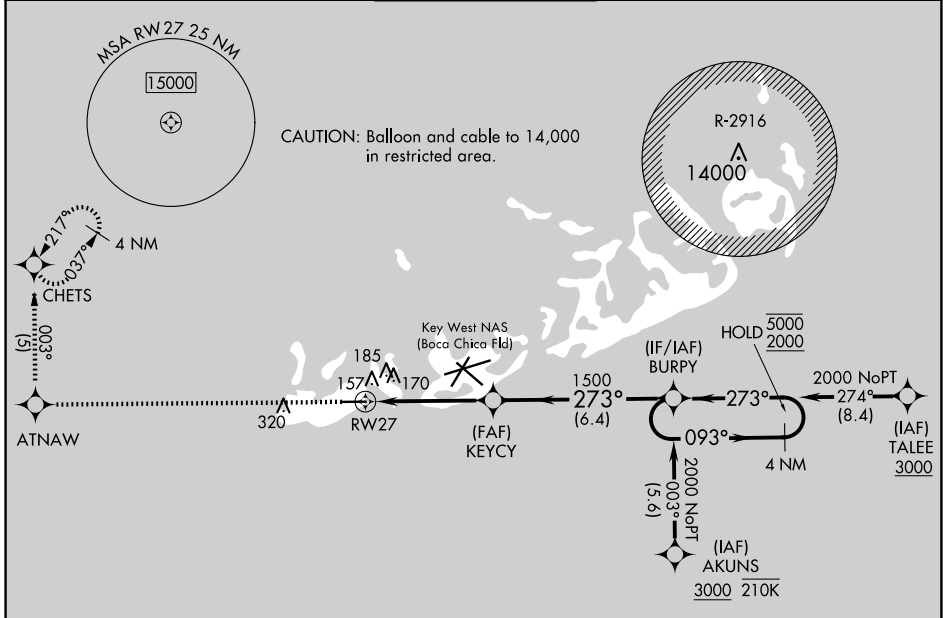
KEY WEST INTL (EYW)

RNP APCH - GPS.

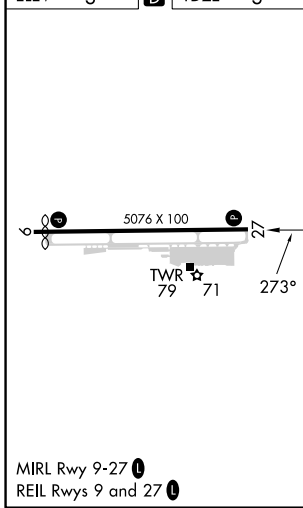
⚠ Rwy 27 helicopter visibility reduction below 3/4 SM NA.
⚠ VDP NA when using NQX altimeter setting. When local altimeter setting not received, use NQX altimeter setting.

MISSED APPROACH: Climb to 3000 direct ATNAW and on track 003° to CHETS and hold, continue to climb in hold to 3000.

ATIS 119.675	NAVY KEY WEST APP CON * 124.025 313.7	KEY WEST TOWER * 118.2 (CTAF) 257.8	GND CON 121.9	CLNC DEL 121.9	UNICOM 122.95
------------------------	---	---	-------------------------	--------------------------	-------------------------



ELEV 3	D	TDZE 3
--------	----------	--------



3000	ATNAW	CHETS	VGSI and RNAV glidepath not coincident (VGSI Angle 3.00/TCH 34).	
	003° tr		BURPY	
	1.3 NM to RW27	KEYCY 1500	093° 5000	273° 2000
	1.3 NM	3.2 NM	6.4 NM	GP 3.00° TCH 45
CATEGORY	A	B	C	D
LPV DA	253-1 250 (300-1)			
LNAV MDA	460-1	457 (500-1)	460-1 3/8	457 (500-1 3/8)
CIRCLING	500-1	497 (500-1)	620-1 3/4 617 (700-1 3/4)	620-2 617 (700-2)

SE-3, 17 APR 2025 to 15 MAY 2025

SE-3, 17 APR 2025 to 15 MAY 2025