

LOC/DME I-JOC	APP CRS	Rwy Idg	<b>7795</b>
<b>109.5</b>	<b>221°</b>	TDZE	<b>13</b>
Chan <b>32</b>		Apt Elev	<b>13</b>

# ILS or LOC RWY 22R

JOHN F KENNEDY INTL (JFK)

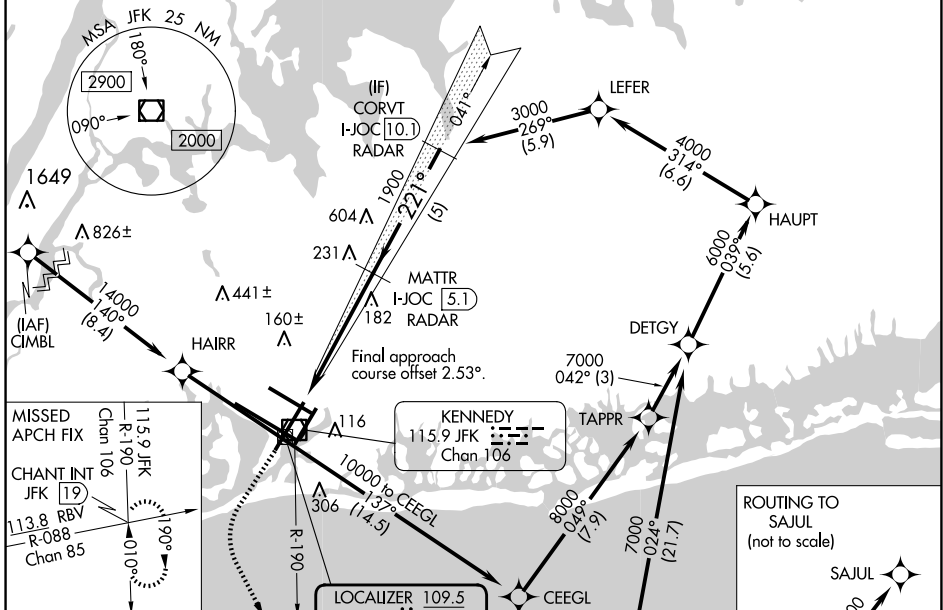
RNAV 1-GPS or RADAR required for procedure entry.

From CIMBL, NRTON: RNAV 1-GPS required. DME or RADAR required.

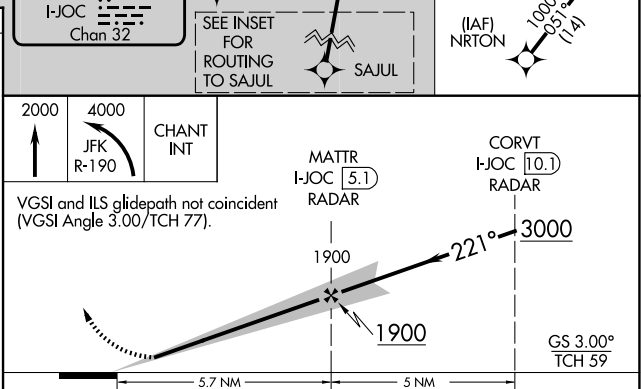
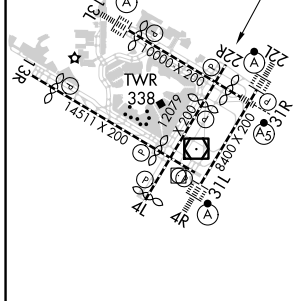
MISSED APPROACH: Climb to 2000 then climbing left turn to 4000 on JFK VOR/DME R-190 to CHANT INT and hold.

**Simultaneous approach authorized.**

D-ATIS (ARR/DEP) (ARR-NE) (ARR-SW)	NEW YORK APP CON	KENNEDY TOWER Rwys 4R/22L and 13L/31R	GND CON	CLNC DEL	CPDLC
<b>128.725 117.7 115.4</b>	<b>128.125 269.0</b>	<b>119.1 281.55</b> <b>123.9 281.55</b>	<b>121.9</b> <b>348.6</b>	<b>135.05</b> <b>348.6</b>	



ELEV 13	<b>D</b>	TDZE 13
---------	----------	---------



RLS Rwys 13L and 13R  
HIRL all Rwys  
TDZ/CL Rwys 4L, 4R, 13L, 22L and 31R  
FAF to MAP 5.7 NM

Knots	60	90	120	150	180
Min:Sec	5:42	3:48	2:51	2:17	1:54

CATEGORY	A	B	C	D
S-ILS 22R		263/40	250 (300-¾)	
S-LOC 22R	460/55	447 (500-1)	460-1¾	447 (500-1¾)
<b>C</b> CIRCLING	640-1	627 (700-1)	680-1¾ 667 (700-1¾)	680-2 667 (700-2)

NE-2, 17 APR 2025 to 15 MAY 2025

NE-2, 17 APR 2025 to 15 MAY 2025