

LOC I-FSM 111.3	APP CRS 260°	Rwy Idg TDZE Apt Elev	9318 448 469
---------------------------	------------------------	-----------------------------	---

ILS Z or LOC Z RWY 26

FORT SMITH RGNL (FSM)

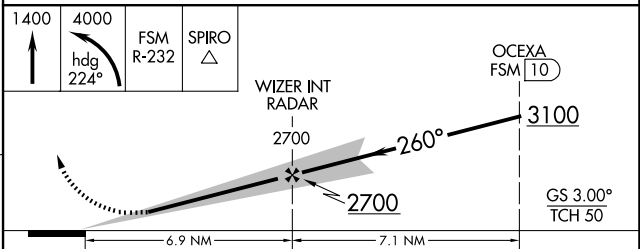
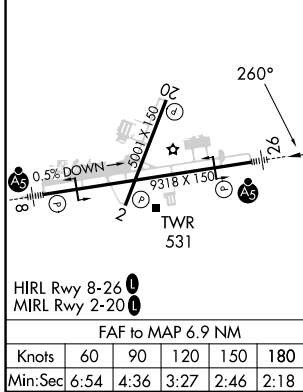
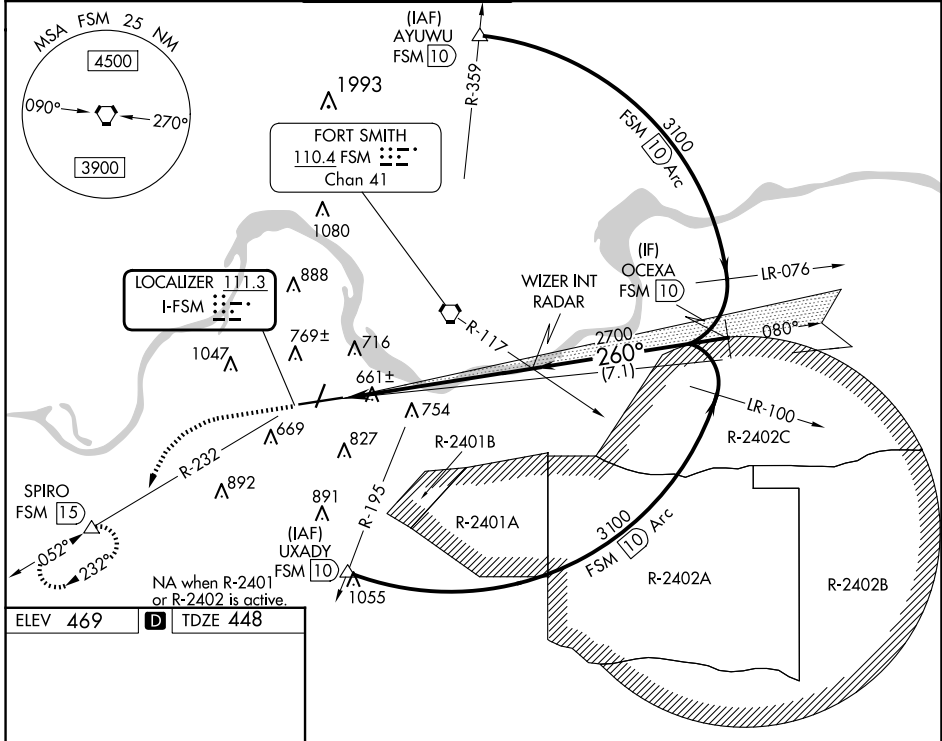
DME required.

⚠ Circling NA for Cat E when R-2401B active. Circling NA for Cat E northwest of Rwy 8 and 20. For inop ALS, increase S-ILS 26 Cat E visibility to RVR ASR 4000 and S-LOC 26 Cat C/D/E to 1 1/2 SM. Circling Rwy 20, 26 NA at night. *RVR 1800 authorized with use of FD or AP or HUD to DA.

MALSR

MISSED APPROACH: Climb to 1400 then climbing left turn to 4000 on heading 224° and FSM VORTAC R-232 to SPIRO/FSM 15 DME and hold, continue climb-in-hold to 4000.

ATIS 124.775	RAZORBACK APP CON* 120.9 343.75	FORT SMITH TOWER* 118.3 (CTAF) 0 323.175	GND CON 121.9 275.8	CLNC DEL 133.85 278.3	UNICOM 122.95
------------------------	---	---	-------------------------------	---------------------------------	-------------------------



CATEGORY	A	B	C	D	E
S-ILS 26*	648/24 200 (200-1/2)				
S-LOC 26	960/24	512 (500-1/2)	960/55	512 (500-1)	
<input checked="" type="checkbox"/> CIRCLING	1140-1	671 (700-1)	1400-2 3/4 931 (1000-2 3/4)	1400-3	931 (1000-3)

SC-1, 17 APR 2025 to 15 MAY 2025

SC-1, 17 APR 2025 to 15 MAY 2025