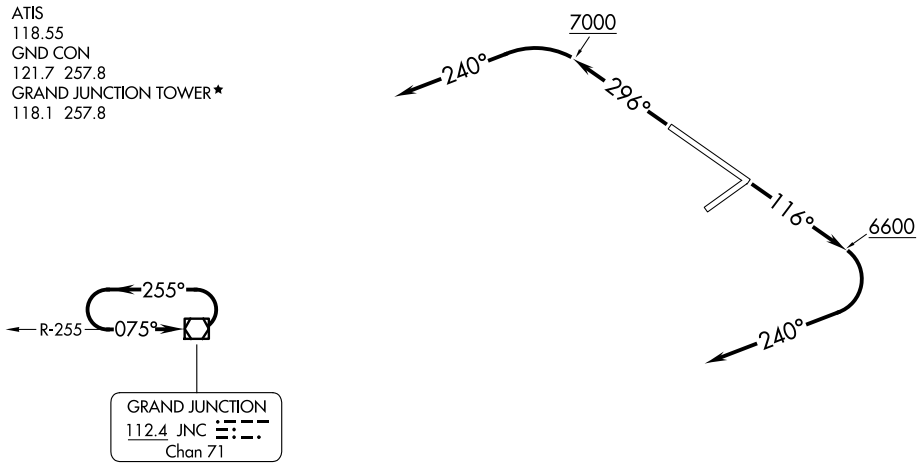


DENVER DEP CON ★  
119.7 317.4  
ATIS  
118.55  
GND CON  
121.7 257.8  
GRAND JUNCTION TOWER ★  
118.1 257.8

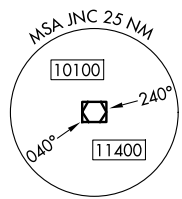


TAKEOFF OBSTACLE NOTES

- Rwy 11: Light poles beginning 7' from DER, 55' left of centerline, up to 3' AGL/4863' MSL.  
Light poles 8' from DER, 54' right of centerline, 1' AGL/4862' MSL.  
Poles beginning 251' from DER, 285' left of centerline, up to 20' AGL/4883' MSL.
- Rwy 29: Vertical structure 151' from DER, 432' right of centerline, 22' AGL/4846' MSL.  
Navaid, tower beginning 266' from DER, 398' right of centerline, up to 43' AGL/4865' MSL.

TAKEOFF MINIMUMS

- Rwy 4: NA - Obstacles.
- Rwy 22: NA - Obstacles, facility reception (JNC VOR/DME).
- Rwy 11: Standard with minimum climb of 235' per NM to 7400.
- Rwy 29: Standard with minimum climb of 225' per NM to 8000.



NOTE: Chart not to scale.

DEPARTURE ROUTE DESCRIPTION

TAKEOFF RUNWAY 11: Climb on heading 116° to 6600, then climbing right turn to heading 240° until receiving JNC VOR/DME, then proceed direct JNC VOR/DME, thence . . . .

TAKEOFF RUNWAY 29: Climb on heading 296° to 7000, then climbing left turn to heading 240° until receiving JNC VOR/DME, then proceed direct JNC VOR/DME, thence . . . .

. . . . Cross JNC VOR/DME at or above MEA/MCA for route of flight. If required, continue climb in JNC holding pattern to cross JNC at or above MEA/MCA for route of flight.

SW-1, 17 APR 2025 to 15 MAY 2025

SW-1, 17 APR 2025 to 15 MAY 2025